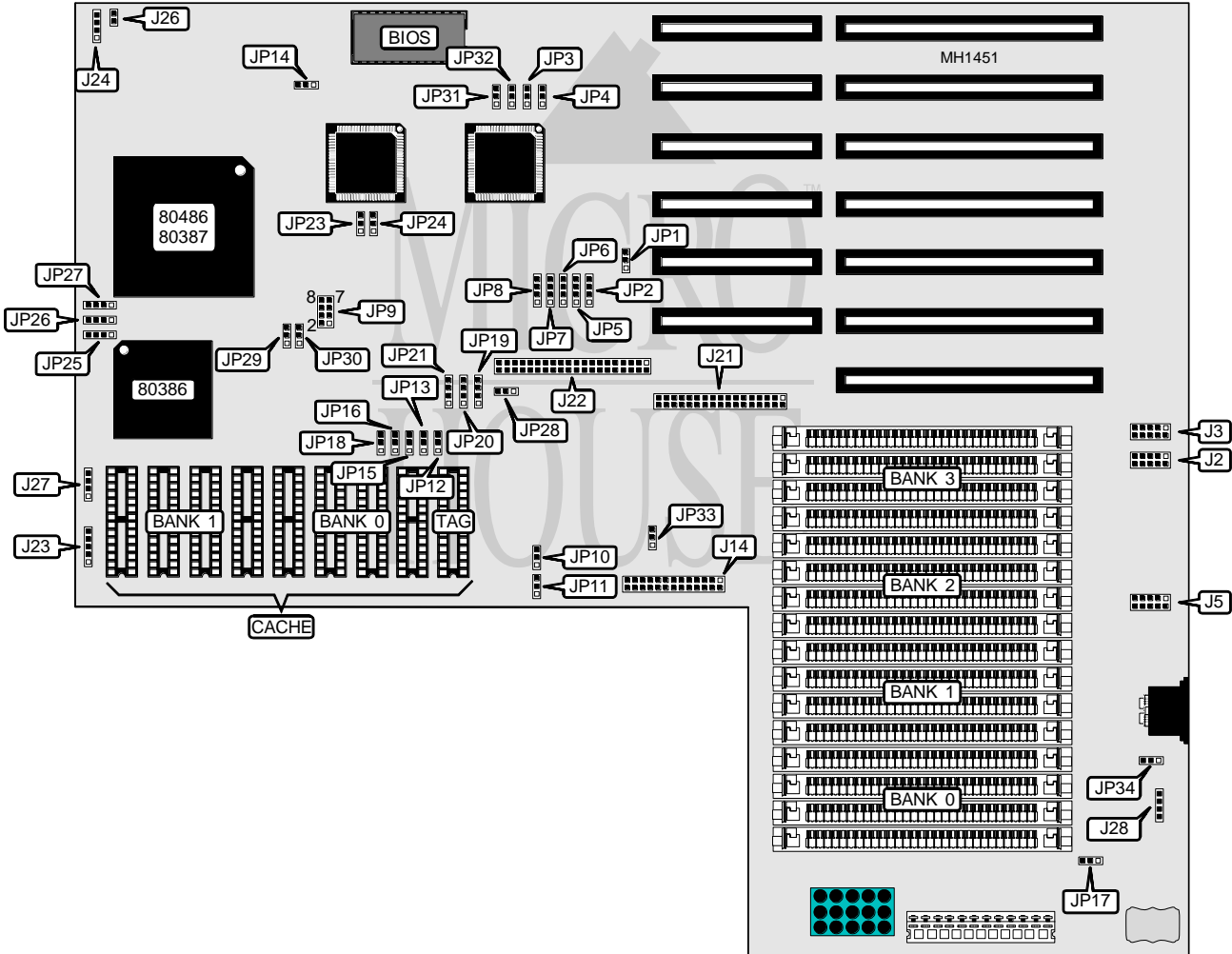


# DEICO ELECTRONICS, INC.

## PREDATOR - Z

<b>Processor</b>	80386DX/80486SX/80487SX/80486DX/ODP486SX/80486DX2
<b>Processor Speed</b>	20/25/33/40/50(internal)/50/66(internal) MHz
<b>Chip Set</b>	Symphony
<b>Max. Onboard DRAM</b>	64MB
<b>Cache</b>	64/128/256KB
<b>BIOS</b>	AMI
<b>Dimensions</b>	355mm x 304mm
<b>I/O Options</b>	Floppy drive interface, IDE interface, parallel port, PS/2 mouse port, serial ports (2)
<b>NPU Options</b>	80387DX



CONNECTIONS			
Purpose	Location	Purpose	Location
Serial port 2	J2	Power LED & keylock	J23
Serial port 1	J3	Turbo switch	J24/pins 1 & 2
PS/2 mouse port	J5	Turbo LED	J24/pins 3 & 4
Parallel port	J14	Reset switch	J26
Floppy drive interface	J21	IDE interface LED	J27
IDE interface	J22	External Battery	J28

Continued on next page . . .

# DEICO ELECTRONICS, INC.

## PREDATOR - Z

... continued from previous page

USER CONFIGURABLE SETTINGS		
Function	Jumper/Switch	Position
í PS/2 mouse port enabled (IRQ12)	JP1	pins 1 & 2 closed
PS/2 mouse port disabled	JP1	pins 2 & 3 closed
í Flash BIOS write protect enabled	JP3	pins 1 & 2 closed
Flash BIOS write protect disabled	JP3	pins 2 & 3 closed
í BIOS type select flash	JP4	pins 1 & 2 closed
BIOS type select standard	JP4	pins 2 & 3 closed
í Monitor type select color	JP14	pins 1 & 2 closed
Monitor type select monochrome	JP14	pins 2 & 3 closed
í Real time clock normal operation	JP17	pins 1 & 2 closed
Real time clock memory clear	JP17	pins 2 & 3 closed
í Factory configured - do not alter	JP28	pins 1 & 2 closed
í I/O ports enabled	JP33	pins 1 & 2 closed
I/O ports disabled	JP33	pins 2 & 3 closed
í Factory configured - do not alter	JP34	Unknown

SERIAL PORT IRQ CONFIGURATION					
Port 1 (J3)	Port 2 (J2)	JP2	JP5	JP6	JP7
IRQ3	IRQ4	pins 3 & 4	pins 2 & 3	pins 1 & 2	pins 3 & 4
IRQ3	IRQ5	pins 2 & 3	pins 3 & 4	pins 1 & 2	pins 3 & 4
IRQ3	IRQ9	pins 3 & 4	pins 3 & 4	pins 1 & 2	pins 2 & 3
IRQ3	Disabled	pins 3 & 4	pins 3 & 4	pins 1 & 2	pins 3 & 4
IRQ4	IRQ3	pins 3 & 4	pins 1 & 2	pins 2 & 3	pins 3 & 4
IRQ4	IRQ5	pins 2 & 3	pins 1 & 2	pins 3 & 4	pins 3 & 4
IRQ4	IRQ9	pins 3 & 4	pins 1 & 2	pins 3 & 4	pins 2 & 3
IRQ4	Disabled	pins 3 & 4	pins 1 & 2	pins 3 & 4	pins 3 & 4
IRQ5	IRQ3	pins 1 & 2	pins 3 & 4	pins 2 & 3	pins 3 & 4
IRQ5	IRQ4	pins 1 & 2	pins 2 & 3	pins 3 & 4	pins 3 & 4
IRQ5	IRQ9	pins 1 & 2	pins 3 & 4	pins 3 & 4	pins 2 & 3
IRQ5	Disabled	pins 1 & 2	pins 3 & 4	pins 3 & 4	pins 3 & 4
IRQ9	IRQ3	pins 3 & 4	pins 3 & 4	pins 2 & 3	pins 1 & 2
IRQ9	IRQ4	pins 3 & 4	pins 2 & 3	pins 3 & 4	pins 1 & 2
IRQ9	IRQ5	pins 2 & 3	pins 3 & 4	pins 3 & 4	pins 1 & 2
IRQ9	Disabled	pins 3 & 4	pins 3 & 4	pins 3 & 4	pins 1 & 2
Disabled	IRQ3	pins 3 & 4	pins 3 & 4	pins 2 & 3	pins 3 & 4
Disabled	IRQ4	pins 3 & 4	pins 2 & 3	pins 3 & 4	pins 3 & 4
Disabled	IRQ5	pins 2 & 3	pins 3 & 4	pins 3 & 4	pins 3 & 4
Disabled	IRQ9	pins 3 & 4	pins 3 & 4	pins 3 & 4	pins 2 & 3
Disabled	Disabled	pins 3 & 4	pins 3 & 4	pins 3 & 4	pins 3 & 4

Note: Pins designated should be in the closed position.  
 The onboard serial ports will automatically configure themselves according to the number of external COM devices installed in the system. Please refer to the following table for an explanation.

Continued on next page . . .

# DEICO ELECTRONICS, INC.

## PREDATOR-Z

... continued from previous page

AUTO-CONFIGURING COM PORT ASSIGNMENT		
External Port(s)	Serial Port 1	Serial Port 2
None	COM1	COM2
COM1	COM3	COM2
COM2	COM1	COM4
COM1 & COM2	COM3	COM4

PARALLEL PORT IRQ CONFIGURATION	
IRQ	JP8
IRQ 7	pins 1 & 2 closed
IRQ 5	pins 2 & 3 closed
Disabled	pins 3 & 4 closed

Note: Parallel port LPT assignments are auto-configuring. If an external card is added to the system with LPT 1 already defined, the main board parallel port will automatically become LPT 2.

SRAM CONFIGURATION			
Size	Cache	Location	TAG
64KB	(8) 8K x 8	Banks 0 & 1	(1) 8K x 8
128KB	(4) 32K x 8	Bank 0	(1) 32K x 8
256KB	(8) 32K x 8	Banks 0 & 1	(1) 32K x 8

SRAM JUMPER CONFIGURATION								
Size	JP12	JP13	JP15	JP16	JP18	JP19	JP20	JP21
64KB	1 & 2	1 & 2	1 & 2	1 & 2	1 & 2	1 & 2	1 & 2	1 & 2
128KB	2 & 3	2 & 3	2 & 3	2 & 3	2 & 3	2 & 3	2 & 3	2 & 3
256KB	1 & 2	1 & 2	1 & 2	1 & 2	1 & 2	3 & 4	3 & 4	3 & 4

Note: Pins designated should be in the closed position.

SRAM/CPU JUMPER CONFIGURATION			
Size	CPU type	JP29	JP30
64KB	80386DX	pins 2 & 3 closed	pins 2 & 3 closed
64KB	any 80486 series	pins 1 & 2 closed	pins 1 & 2 closed
128KB	80386DX	pins 1 & 2 closed	pins 1 & 2 closed
128KB	any 80486 series	pins 1 & 2 closed	pins 1 & 2 closed
256KB	80386DX	pins 2 & 3 closed	pins 2 & 3 closed
256KB	any 80486 series	pins 1 & 2 closed	pins 1 & 2 closed

CPU TYPE CONFIGURATION					
CPU	JP25	JP26	JP27	JP31	JP32
80386DX	N/A	N/A	N/A	pins 1 & 2	pins 1 & 2
80486SX	pins 3 & 4	pins 3 & 4	pins 3 & 4	pins 2 & 3	pins 2 & 3
80487SX	pins 2 & 3	pins 2 & 3	pins 2 & 3	pins 2 & 3	pins 2 & 3
80486DX/DX2	pins 1 & 2	pins 1 & 2	pins 1 & 2	pins 2 & 3	pins 2 & 3

Note: Pins designated should be in the closed position.

Continued on next page ...

**DEICO ELECTRONICS, INC.**  
**PREDATOR - Z**

... continued from previous page

CPU SPEED CONFIGURATION					
Speed	JP9	JP10	JP11	JP23	JP24
20MHz	pins 1 & 2	pins 1 & 2	pins 1 & 2	pins 1 & 2	pins 1 & 2
25/50i MHz	pins 3 & 4	pins 1 & 2	pins 1 & 2	pins 1 & 2	pins 1 & 2
33/66i MHz	pins 5 & 6	pins 1 & 2	pins 1 & 2	pins 1 & 2	pins 1 & 2
40MHz	pins 7 & 8	pins 1 & 2	pins 2 & 3	pins 1 & 2	pins 1 & 2
50MHz	pins 3 & 4	pins 2 & 3	pins 1 & 2	pins 2 & 3	pins 2 & 3

Note: Pins designated should be in the closed position.

DRAM CONFIGURATION				
Size	Bank 0	Bank 1	Bank 2	Bank 3
1MB	(4) 256K x 9	NONE	NONE	NONE
2MB	(4) 256K x 9	(4) 256K x 9	NONE	NONE
3MB	(4) 256K x 9	(4) 256K x 9	(4) 256K x 9	NONE
4MB	(4) 256K x 9	(4) 256K x 9	(4) 256K x 9	(4) 256K x 9
4MB	(4) 1M x 9	NONE	NONE	NONE
5MB	(4) 1M x 9	(4) 256K x 9	NONE	NONE
6MB	(4) 1M x 9	(4) 256K x 9	(4) 256K x 9	NONE
7MB	(4) 1M x 9	(4) 256K x 9	(4) 256K x 9	(4) 256K x 9
8MB	(4) 1M x 9	(4) 1M x 9	NONE	NONE
9MB	(4) 1M x 9	(4) 1M x 9	(4) 256K x 9	NONE
10MB	(4) 1M x 9	(4) 1M x 9	(4) 256K x 9	(4) 256K x 9
12MB	(4) 1M x 9	(4) 1M x 9	(4) 1M x 9	NONE
16MB	(4) 1M x 9	(4) 1M x 9	(4) 1M x 9	(4) 1M x 9
16MB	(4) 4M x 9	NONE	NONE	NONE
17MB	(4) 4M x 9	(4) 256K x 9	NONE	NONE
18MB	(4) 4M x 9	(4) 256K x 9	(4) 256K x 9	NONE
19MB	(4) 4M x 9	(4) 256K x 9	(4) 256K x 9	(4) 256K x 9
20MB	(4) 4M x 9	(4) 1M x 9	NONE	NONE
21MB	(4) 4M x 9	(4) 1M x 9	(4) 256K x 9	NONE
22MB	(4) 4M x 9	(4) 1M x 9	(4) 256K x 9	(4) 256K x 9
24MB	(4) 4M x 9	(4) 1M x 9	(4) 1M x 9	NONE
28MB	(4) 4M x 9	(4) 1M x 9	(4) 1M x 9	(4) 1M x 9
32MB	(4) 4M x 9	(4) 4M x 9	NONE	NONE
33MB	(4) 4M x 9	(4) 4M x 9	(4) 256K x 9	NONE
34MB	(4) 4M x 9	(4) 4M x 9	(4) 256K x 9	(4) 256K x 9
36MB	(4) 4M x 9	(4) 4M x 9	(4) 1M x 9	NONE
37MB	(4) 256K x 9	(4) 1M x 9	(4) 4M x 9	(4) 4M x 9
40MB	(4) 4M x 9	(4) 4M x 9	(4) 1M x 9	(4) 1M x 9
48MB	(4) 4M x 9	(4) 4M x 9	(4) 4M x 9	NONE
49MB	(4) 256K x 9	(4) 4M x 9	(4) 4M x 9	(4) 4M x 9
52MB	(4) 4M x 9	(4) 1M x 9	(4) 4M x 9	(4) 4M x 9
64MB	(4) 4M x 9	(4) 4M x 9	(4) 4M x 9	(4) 4M x 9