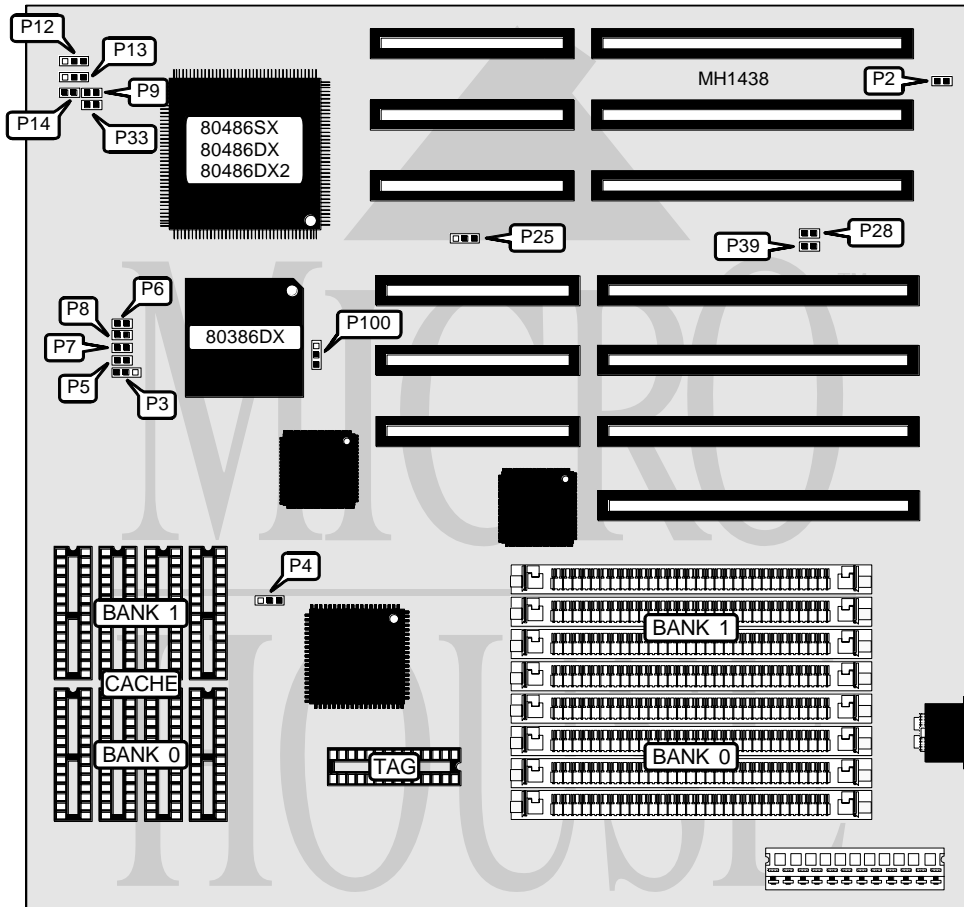


# ZIDA TECHNOLOGIES, LTD.

## OPTI 3486

<b>Processor</b>	80386DX/80486SX/80487SX/80486DX/80486DX2
<b>Processor Speed</b>	20/25/33/40/50(internal)/50/66(internal)MHz
<b>Chip Set</b>	OPTI
<b>Max. Onboard DRAM</b>	32MB
<b>SRAM Cache</b>	64/128/256KB
<b>BIOS</b>	AMI
<b>Dimensions</b>	220mm x 220mm
<b>I/O Options</b>	None
<b>NPU Options</b>	None



CONNECTIONS			
Purpose	Location	Purpose	Location
Reset switch	J1	Speaker	J4
Turbo LED	J3	Power LED & keylock	J5
Note: The Locations of connectors J1, J3, J4, and J5 are unknown.			

Continued on next page . . .

# ZIDA TECHNOLOGIES, LTD.

## OPTI 3486

... continued from previous page

USER CONFIGURABLE SETTINGS		
Function	Jumper	Position
í Factory configured - do not alter	P2	Unknown

DRAM CONFIGURATION		
Size	Bank 0	Bank 1
1MB	(4) 256K x 9	NONE
2MB	(4) 256K x 9	(4) 256K x 9
4MB	(4) 1M x 9	NONE
8MB	(4) 1M x 9	(4) 1M x 9
16MB	(4) 4M x 9	NONE
20MB	(4) 4M x 9	(4) 1M x 9
32MB	(4) 4M x 9	(4) 4M x 9

SRAM CONFIGURATION			
Size	Cache	Location	TAG
64KB	(8) 8K x 8	Banks 0 & 1	(1) 8K x 8
128KB	(4) 32K x 8	Bank 0	(1) 8K x 8
256KB	(8) 32K x 8	Banks 0 & 1	(1) 32K x 8

SRAM JUMPER CONFIGURATION						
Size	P3	P5	P6	P7	P8	P9
64KB	pins 2 & 3 closed	Open	Open	Open	Open	Open
128KB	pins 1 & 2 closed	Open	Open	Closed	Closed	Closed
256KB	pins 2 & 3 closed	Closed	Closed	Closed	Closed	Closed

CONFIGURATION FOR 80386DX CPU		
Jumper	33MHz	40MHz
P4	pins 1 & 2 closed	pins 1 & 2 closed
P12	N/A	N/A
P13	N/A	N/A
P14	N/A	N/A
P25	pins 2 & 3 closed	pins 2 & 3 closed
P28	Open	Open
P30	Closed	Open
P31	Closed	Open
P32	Open	Closed
P33	Open	Open
P39	Closed	Open
P97	Closed	Closed
P100	pins 1 & 2 closed	pins 1 & 2 closed

Continued On next page . . .

# ZIDA TECHNOLOGIES, LTD.

## OPTI 3486

... continued from previous page

CONFIGURATION FOR 80486SX, 80486DX & 80486DX2 CPU						
Jumper	20MHz	25MHz	33MHz	50iMHz	50MHz	66iMHz
P4	pins 2 & 3	pins 2 & 3	pins 2 & 3	pins 2 & 3	pins 2 & 3	pins 2 & 3
P12	pins 2 & 3	pins 2 & 3	pins 1 & 2	pins 1 & 2	pins 1 & 2	pins 1 & 2
P13	Open	Open	pins 1 & 2	pins 1 & 2	pins 1 & 2	pins 1 & 2
P14	Open	Open	Closed	Closed	Closed	Closed
P25	pins 1 & 2	pins 1 & 2	pins 1 & 2	pins 1 & 2	pins 1 & 2	pins 1 & 2
P28	Closed	Closed	Closed	Closed	Closed	Closed
P30	Open	Closed	Closed	Closed	Closed	Closed
P31	Closed	Open	Closed	Open	Open	Closed
P32	Closed	Closed	Open	Closed	Closed	Open
P33	Closed	Closed	Closed	Closed	Closed	Closed
P39	N/A	N/A	N/A	N/A	N/A	N/A
P97	Open	Open	Open	Open	Closed	Open
P100	pins 2 & 3	pins 2 & 3	pins 2 & 3	pina 2 & 3	pins 2 & 3	pins 2 & 3

Note: Pins designated should be in the closed position.  
Location of jumpers P30, P31, P32 and P97 are unknown.