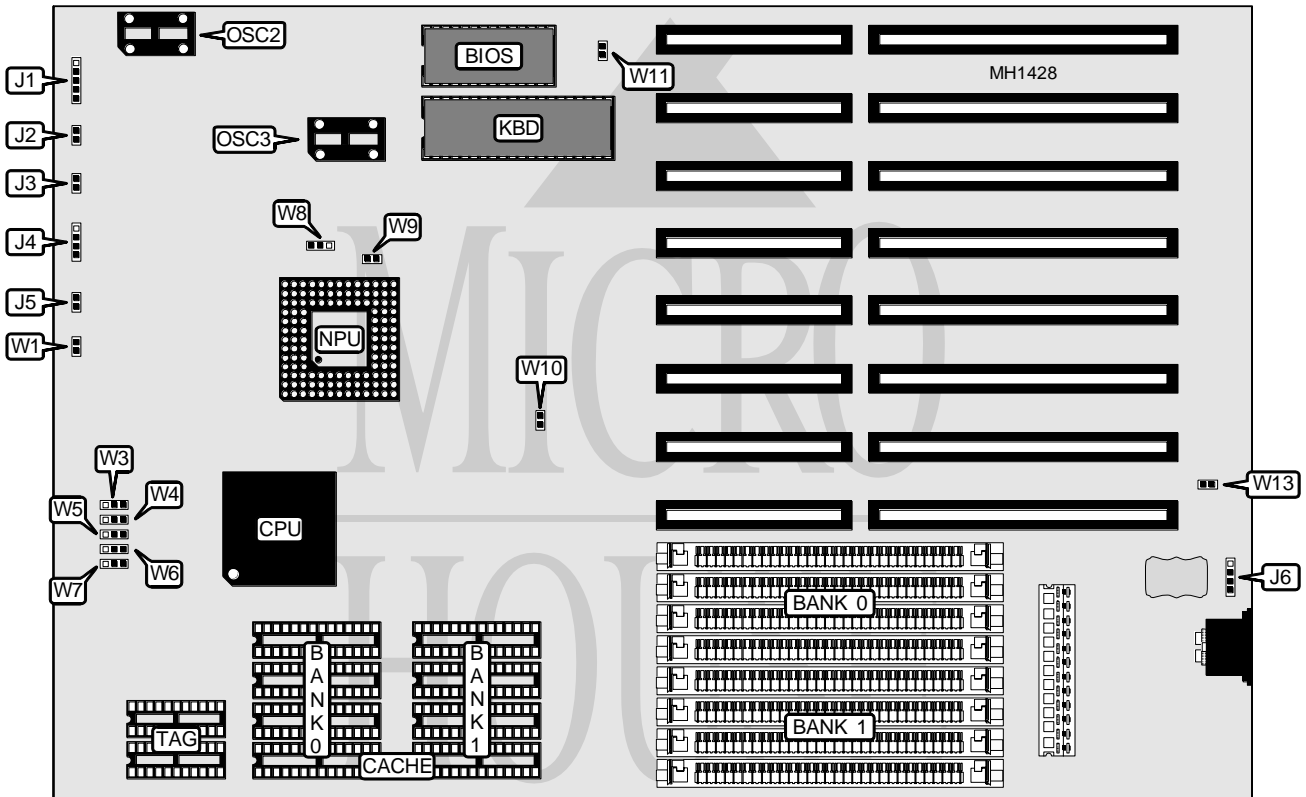


ADVANCED INTEGRATION RESEARCH, INC.

386UF

Processor	80386DX/CX486DLC
Processor Speed	25/33/40MHz
Chip Set	UMC
Max. onboard DRAM	32MB
SRAM Cache	32/64/128/256KB
BIOS	AMI/Phoenix
Dimensions	320mm x 220mm
I/O Options	None
NPU Options	80387DX/3167



CONNECTIONS			
Purpose	Location	Purpose	Location
Power LED & keylock	J1	Reset switch	J5
Turbo switch	J2	External battery	J6
Turbo LED	J3	80387 oscillator (optional)	OSC2
Speaker	J4	CPU oscillator	OSC3

Continued on next page . . .

ADVANCED INTEGRATION RESEARCH, INC.
386UF

... continued from previous page

USER CONFIGURABLE SETTINGS		
Function	Jumper	Position
í Monitor type select color	W11	Closed
Monitor type select monochrome	W11	Open
í Battery select internal	W13	Closed
Battery select external	W13	Open

DRAM CONFIGURATION		
Size	Bank 0	Bank 1
1MB	(4) 256K x 9	NONE
2MB	(4) 256K x 9	(4) 256K x 9
4MB	(4) 1M x 9	NONE
5MB	(4) 256K x 9	(4) 1M x 9
8MB	(4) 1M x 9	(4) 1M x 9
16MB	(4) 4M x 9	NONE
20MB	(4) 1M x 9	(4) 4M x 9
32MB	(4) 4M x 9	(4) 4M x 9

CACHE CONFIGURATION				
Size	Max Cacheable	Bank 0	Bank 1	TAG
32KB	4MB	(4) 8K x 8	NONE	(2) 16K x 4
64KB	8MB	(4) 8K x 8	(4) 8K x 8	(2) 16K x 4
128KB	16MB	(4) 32K x 8	NONE	(2) 16K x 4
256KB	32MB	(4) 32K x 8	(4) 32K x 8	(2) 16K x 4

CACHE JUMPER CONFIGURATION					
Size	W3	W4	W5	W6	W7
32KB	pins 1 & 2	pins 1 & 2	pins 1 & 2	pins 2 & 3	N/A
64KB	pins 2 & 3	pins 1 & 2	pins 1 & 2	pins 1 & 2	N/A
128KB	pins 2 & 3	pins 2 & 3	pins 1 & 2	pins 2 & 3	pins 1 & 2
256KB	pins 2 & 3	pins 2 & 3	pins 2 & 3	pins 1 & 2	pins 2 & 3

Note: Pins designated should be in the closed position.

NPU CONFIGURATION			
Clock	Mode	W8	W9
OSC3	Synchronous	pins 1 & 2 closed	Open
OSC2	Asynchronous	pins 2 & 3 closed	Closed

NPU SELECTION		
Type	W1	W10
í None	Open	Open
80387	Closed	Closed
4167	Open	Open