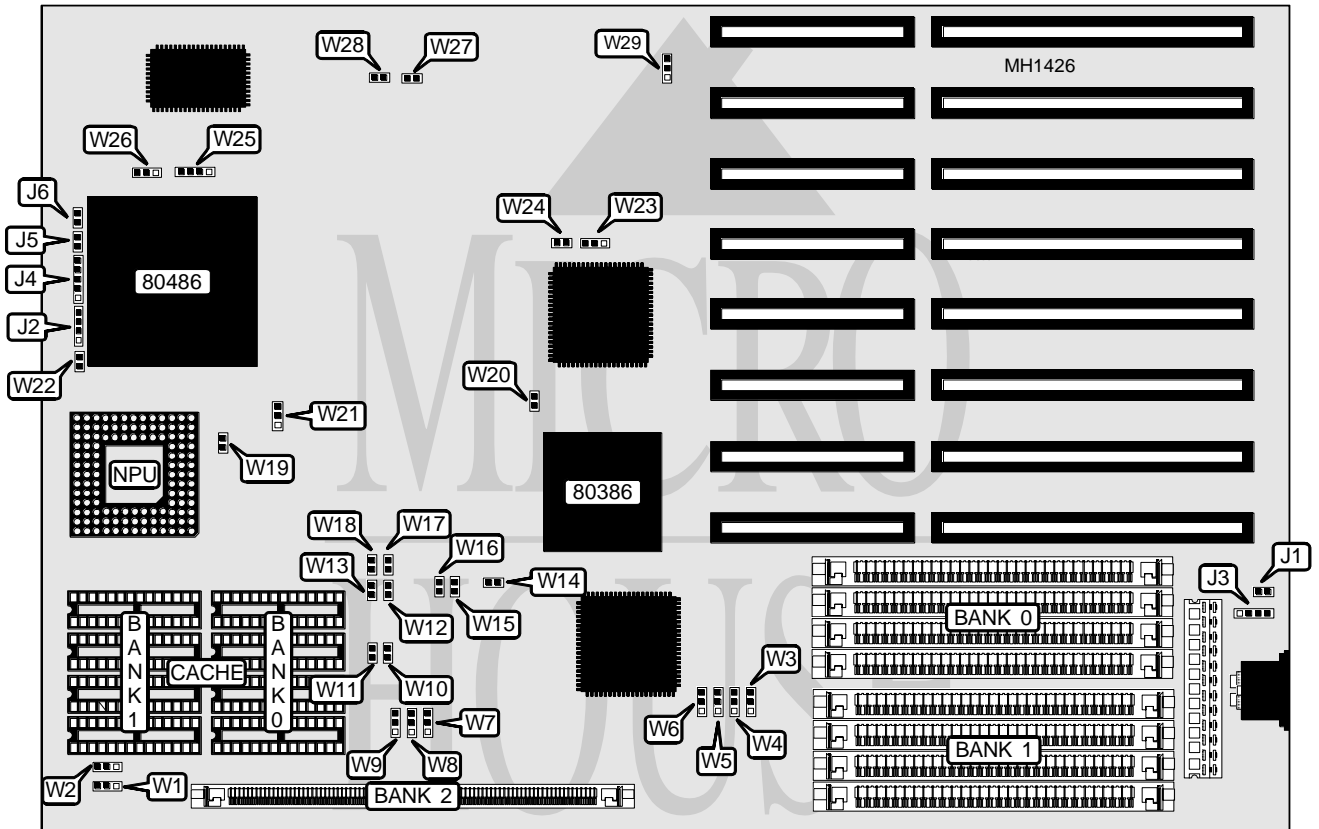


ZENY COMPUTERS

ZEN 3486

Processor	80386DX/80486SX/80487SX/80486DX/ODP486SX/80486DX2
Processor Speed	20/25/33/40/50(internal)/50/66(internal) MHz
Chip Set	UMC
Max. Onboard DRAM	48MB
SRAM Cache	64/128KB
BIOS	AMI
Dimensions	330mm x 218mm
I/O Options	None
NPU Options	80387/3167



CONNECTIONS			
Function	Location	Function	Location
Speaker	J2	Turbo LED	J5
External Battery	J3	Reset switch	J6
Power LED & keylock	J4	Turbo Switch	W22

Continued on next page . . .

ZENY COMPUTERS

ZEN 3486

... continued from previous page

USER CONFIGURABLE SETTINGS		
Function	Location	Setting
í Battery select internal	J1	Closed
Battery select external	J1	Open
í Factory configured - do not alter	W3	Open
í Factory configured - do not alter	W4	Open
í NPU Select 3187 or none	W15 & W20	Open
NPU Select 80387	W15 & W20	Closed
í Factory configured do not alter	W16	Open
í NPU synchronous with CPU	W19 W21	Open pins 1 & 2 closed
NPU synchronous with oscillator installed at Y1	W19 W21	Closed pins 2 & 3 closed
í Factory configured - do not alter	W23	Open
í Factory configured - do not alter	W27	Open
í Factory configured - do not alter	W28	Open
í CMOS memory normal operation	W29	pins 1 & 2 closed
CMOS memory clear	W29	pins 2 & 3 closed
Note: W27 & W28 may not be present on later revisions		

CPU CONFIGURATION						
Type	CPU Speed	OSC	W14	W24	W25	W26
80386DX	33MHz	66MHz	Open	Open	N/A	N/A
80386DX	40MHz	80MHz	Open	Open	N/A	N/A
80486SX	20MHz	20MHz	Closed	Open	pins 2 & 3	Open
80486SX	20MHz	40MHz	Closed	Open	pins 2 & 3	Open
80486SX	25MHz	25MHz	Closed	Open	pins 2 & 3	Open
80486SX	25MHz	50MHz	Closed	Closed	pins 2 & 3	Open
80487SX	25MHz	25MHz	Closed	Open	pins 1 & 2 and 3 & 4	pins 2 & 3
80486DX	33MHz	33MHz	Closed	Open	pins 1 & 2 and 3 & 4	pins 1 & 2
80486DX	33MHz	66MHz	Closed	Closed	pins 1 & 2 and 3 & 4	pins 1 & 2
80486DX	50MHz	50MHz	Closed	Open	pins 1 & 2 and 3 & 4	pins 1 & 2
ODP486SX	50iMHz	25MHz	Closed	Open	pins 1 & 2 and 3 & 4	pins 2 & 3
80486DX2	50iMHz	25MHz	Closed	Open	pins 1 & 2 and 3 & 4	pins 1 & 2
80486DX2	50iMHz	50MHz	Closed	Closed	pins 1 & 2 and 3 & 4	pins 1 & 2
Note: pins designated should be in the closed position.						

Continued on next page . . .

ZENY COMPUTERS

ZEN 3486

... continued from previous page

DRAM CONFIGURATION					
Size	Bank 0	Bank 1	Bank 2	W5	W6
1MB	(4) 256K x 9	None	None	pins 1 & 2	pins 1 & 2
2MB	(4) 256K x 9	(4) 256K x 9	None	pins 1 & 2	pins 1 & 2
3MB	(4) 256K x 9	(4) 256K x 9	(1) 256K x 36	pins 2 & 3	pins 2 & 3
4MB	(4) 1M x 9	None	None	pins 1 & 2	pins 1 & 2
5MB	(4) 256K x 9	(4) 1M x 9	None	pins 1 & 2	pins 1 & 2
6MB	(4) 256K x 9	(4) 256K x 9	(1) 1M x 36	pins 2 & 3	pins 2 & 3
8MB	(4) 1M x 9	(4) 1M x 9	None	pins 1 & 2	pins 1 & 2
9MB	(4) 1M x 9	(4) 1M x 9	(1) 256K x 36	pins 2 & 3	pins 2 & 3
10MB	(4) 256K x 9	(4) 256K x 9	(1) 2M x 36	pins 2 & 3	pins 2 & 3
12MB	(4) 1M x 9	(4) 1M x 9	(1) 1M x 36	pins 2 & 3	pins 2 & 3
16MB	(4) 1M x 9	(4) 1M x 9	(1) 2M x 36	pins 2 & 3	pins 2 & 3
16MB	(4) 4M x 9	None	None	pins 1 & 2	pins 1 & 2
17MB	(4) 256K x 9	(4) 4M x 9	None	pins 1 & 2	pins 1 & 2
18MB	(4) 256K x 9	(4) 256K x 9	(1) 4M x 36	pins 2 & 3	pins 2 & 3
20MB	4) 1M x 9	(4) 4M x 9	None	pins 1 & 2	pins 1 & 2
24MB	(4) 1M x 9	(4) 1M x 9	(1) 4M x 36	pins 2 & 3	pins 2 & 3
32MB	(4) 4M x 9	(4) 4M x 9	None	pins 1 & 2	pins 1 & 2
33MB	(4) 4M x 9	(4) 4M x 9	(1) 256K x 36	pins 2 & 3	pins 2 & 3
36MB	(4) 4M x 9	(4) 4M x 9	(1) 1M x 36	pins 2 & 3	pins 2 & 3
40MB	(4) 4M x 9	(4) 4M x 9	(1) 2M x 36	pins 2 & 3	pins 2 & 3
48MB	(4) 4M x 9	(4) 4M x 9	(1) 4M x 36	pins 2 & 3	pins 2 & 3

Note: pins designated should be in the closed position.

SRAM JUMPER CONFIGURATION				
Jumper	32KB	64KB	128KB	256KB
W1	pins 2 & 3 closed	pins 1 & 2 closed	pins 2 & 3 closed	pins 1 & 2 closed
W2	Open	Open	pins 1 & 2 closed	pins 2 & 3 closed
W7	pins 1 & 2 closed	pins 2 & 3 closed	pins 2 & 3 closed	pins 2 & 3 closed
W8	pins 1 & 2 closed	pins 1 & 2 closed	pins 2 & 3 closed	pins 2 & 3 closed
W9	pins 1 & 2 closed	pins 1 & 2 closed	pins 1 & 2 closed	pins 2 & 3 closed
W10	Open	Closed	Closed	Closed
W11	Open	Closed	Closed	Closed
W12	Open	Open	Open	Closed
W13	Open	Open	Closed	Closed
W17	Open	Open	Open	Closed
W18	Open	Open	Closed	Closed
Cacheable Region	8MB	16MB	32MB	64MB

Note: W10 may not be present on later revisions