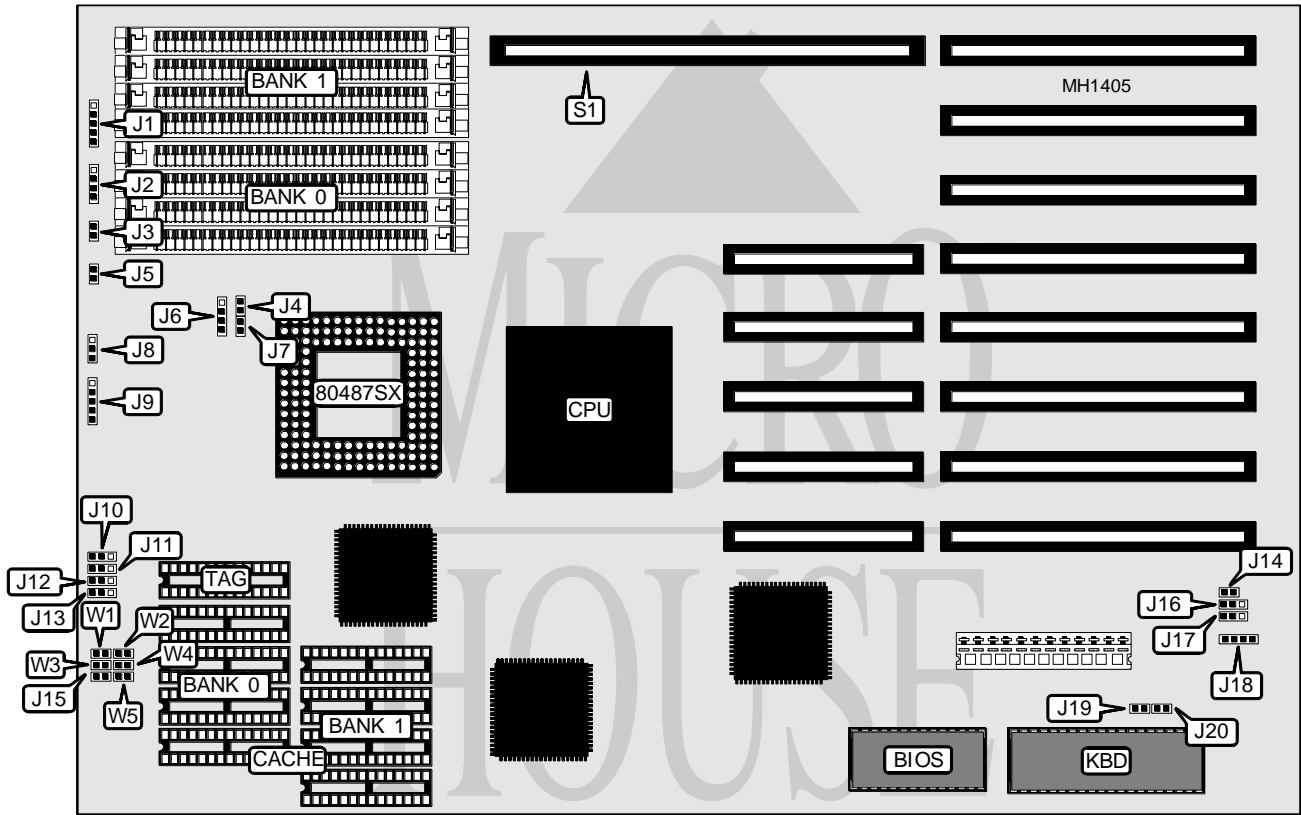


# DIAMOND FLOWER, INC.

## 486SX-16/20/25UCE

<b>Processor</b>	80486SX/80487SX
<b>Processor Speed</b>	16/20/25MHz
<b>Chip Set</b>	UMC
<b>Max. Onboard DRAM</b>	32MB
<b>Cache</b>	64/128/256KB
<b>BIOS</b>	AMI
<b>Dimensions</b>	330mm x 220mm
<b>I/O OPTIONS</b>	32-bit external memory card slot
<b>NPU Options</b>	None



CONNECTIONS			
Purpose	Location	Purpose	Location
Keyboard connector	J1	Turbo switch	J8 and J17
Speaker	J2	Power LED & Keylock	J9
Turbo LED	J3	External battery	J18
Reset switch	J5 and J14	32-bit external memory card	S1

Continued on next page . . .

**DIAMOND FLOWER, INC.**  
**486SX-16/20/25UCE**

... continued from previous page

USER CONFIGURABLE SETTINGS		
Function	Jumper	Position
í Factory configured - do not alter	J4	open
í Factory configured - do not alter	J6	pins 2 & 3 closed
CPU speed select 16/25MHz	J7	open
CPU speed select 20MHz	J7	closed
í Battery select internal	J16	pins 2 & 3 closed
Battery select external	J16	pins 1 & 2 closed
í Factory configured - do not alter	J19	open
í Monitor type select color	J20	closed
Monitor type select monochrome	J20	open

DRAM CONFIGURATION		
Size	Bank 0	Bank 1
1MB	(4) 256K x 9	NONE
2MB	(4) 256K x 9	(4) 256K x 9
4MB	(4) 1M x 9	NONE
5MB	(4) 256K x 9	(4) 1M x 9
8MB	(4) 1M x 9	(4) 1M x 9
16MB	(4) 4M x 9	NONE
20MB	(4) 1M x 9	(4) 4M x 9
32MB	(4) 4M x 9	(4) 4M x 9

SRAM CONFIGURATION			
Size	Cache SRAM	Location	TAG
64KB	(8) 8K x 8	Banks 0 & 1	(1) 8K x 8
128KB	(4) 32K x 8	Bank 0	(1) 8K x 8
256KB	(8) 32K x 8	Banks 0 & 1	(1) 32K x 8

SRAM JUMPER CONFIGURATION			
Jumper	64KB	128KB	256KB
W1	open	closed	closed
W2	open	closed	closed
W3	closed	closed	closed
W4	open	open	closed
W5	open	open	closed
J10	pins 1 & 2 closed	pins 2 & 3 closed	pins 2 & 3 closed
J11	pins 1 & 2 closed	pins 2 & 3 closed	pins 1 & 2 closed
J12	open	pins 1 & 2 closed	pins 2 & 3 closed
J13	pins 1 & 2 closed	pins 1 & 2 closed	pins 2 & 3 closed
J15	closed	closed	closed