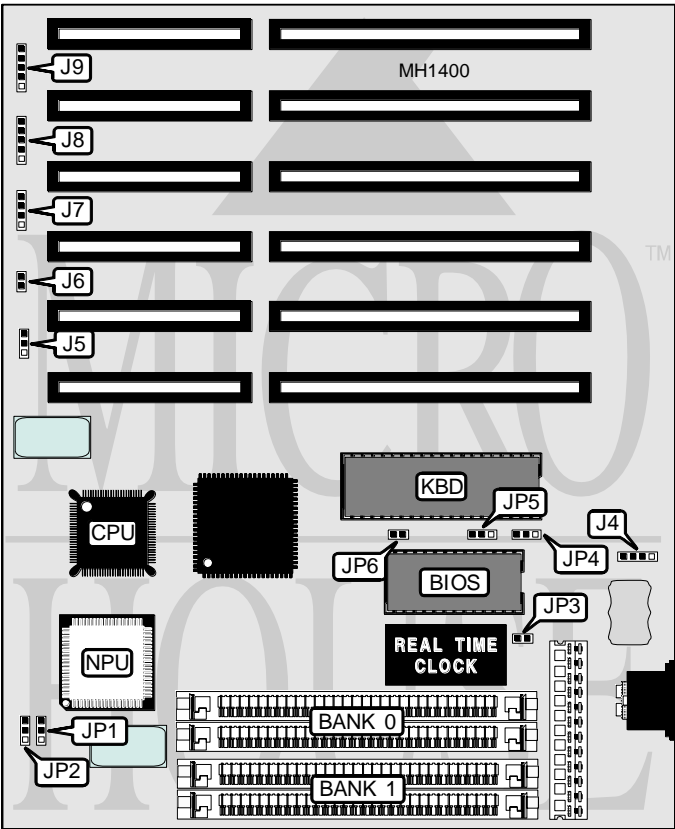


JETPRO INFOTECH COMPANY, LTD.
M B - 3 A (M B - 3 3 3 S X A)

Processor	80386SX/CX486SLC
Processor Speed	16/20/25/33MHz
Chip Set	ALI
Max. Onboard DRAM	16MB
SRAM Cache	None
BIOS	AMI/MR
Dimensions	178mm x 218mm
I/O Options	None
NPU Options	80387SX



CONNECTIONS			
Purpose	Location	Purpose	Location
External battery	J4	Turbo LED & Turbo switch	J8 pins 1 & 2
Reset switch	J6	Power LED & keylock	J8 pins 4 & 5
Speaker	J7	Power LED & keylock	J9

Continued on next page . . .

JETPRO INFOTECH COMPANY, LTD.
MB - 3 A (MB - 3 3 3 S X A)

... continued from previous page

USER CONFIGURABLE SETTINGS		
Function	Jumper	Position
ADS delay enabled	J5	pins 1 & 2 closed
ADS delay disabled	J5	pins 2 & 3 closed
í NPU mode select synchronous with CPU	JP2	pins 1 & 2 closed
NPU mode select asynchronous with CPU	JP2	pins 2 & 3 closed
í RTC type select 146818	JP3	open
RTC type select 1287	JP3	closed
í Monitor type select color	JP4	pins 2 & 3 closed
Monitor type select monochrome	JP4	pins 1 & 2 closed
í Parity check disabled	JP6	open
Parity check enabled	JP6	closed

CPU SPEED CONFIGURATION		
CPU Speed	JP1	JP5
16MHz	pins 1 & 2 closed	pins 1 & 2 closed
20MHz	pins 2 & 3 closed	pins 1 & 2 closed
25MHz	pins 1 & 2 closed	pins 2 & 3 closed
33MHz	pins 2 & 3 closed	pins 2 & 3 closed

DRAM CONFIGURATION		
Size	Bank 0	Bank 1
512KB	(2) 256K x 9	NONE
1MB	(2) 256K x 9	(2) 256K x 9
2MB	(2) 1M x 9	NONE
4MB	(2) 1M x 9	(2) 1M x 9
8MB	(2) 4M x 9	NONE
16MB	(2) 4M x 9	(2) 4M x 9