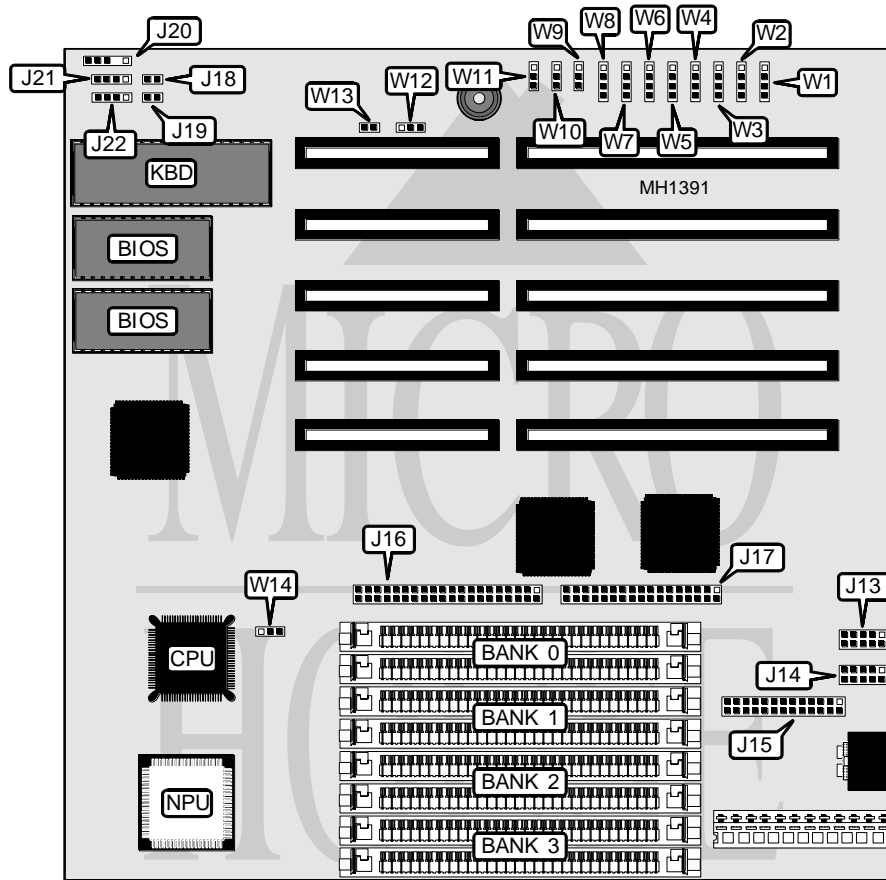


DEICO ELECTRONICS, INC.

386SX-MIDGET

Processor	80386SX
Processor Speed	16/20MHz
Chip Set	OPTI
Max. Onboard DRAM	8MB
Cache	None
BIOS	AMI
Dimensions	220mm x 220mm
I/O Options	Floppy drive interface, IDE interface, Parallel port, Serial port (2)
NPU Options	80387SX



DRAM CONFIGURATION				
Size	Bank 0	Bank 1	Bank 0	Bank 1
512KB	(2) 256K x 9	NONE	NONE	NONE
1MB	(2) 256K x 9	(2) 256K x 9	NONE	NONE
1.5MB	(2) 256K x 9	(2) 256K x 9	(2) 256K x 9	NONE
2MB	(2) 1M x 9	NONE	NONE	NONE
3MB	(2) 256K x 9	(2) 256K x 9	(2) 1M x 9	NONE
4MB	(2) 1M x 9	(2) 1M x 9	NONE	NONE
5MB	(2) 256K x 9	(2) 256K x 9	(2) 1M x 9	(2) 1M x 9
6MB	(2) 1M x 9	(2) 1M x 9	(2) 1M x 9	NONE
8MB	(2) 1M x 9	(2) 1M x 9	(2) 1M x 9	(2) 1M x 9

Continued on next page . . .

DEICO ELECTRONICS, INC.

386SX - MIDGET

... continued from previous page

CONNECTIONS			
Purpose	Location	Purpose	Location
Serial port 1	J13	Reset switch	J19
Serial port 2	J14	Power LED & keylock	J20
Parallel port	J15	Speaker	J21
IDE interface	J16	Turbo switch	J22/pins 1 & 2
Floppy drive interface	J17	Turbo LED	J22/pins 3 & 4
IDE interface LED	J18		

USER CONFIGURABLE SETTINGS		
Function	Jumper	Position
í Parallel port (J15) select LPT1 at 378h	W1	pins 1 & 2 closed
Parallel port (J15) select LPT2 at 278h	W1	pins 2 & 3 closed
Parallel port (J15) disabled	W1	pins 3 & 4 closed
í Serial port 1 (J13) select COM1 at 3F8h	W2	pins 1 & 2 closed
Serial port 1 (J13) select COM3 at 3E8h	W2	pins 2 & 3 closed
Serial port 1 (J13) disabled	W2	pins 3 & 4 closed
í Serial port 2 (J14) select COM2 at 2F8h	W3	pins 1 & 2 closed
Serial port 2 (J14) select COM4 at 2E8h	W3	pins 2 & 3 closed
Serial port 2 (J14) disabled	W3	pins 3 & 4 closed
í Parallel port (J15) select IRQ7	W4	pins 1 & 2 closed
Parallel port (J15) select IRQ5	W4	pins 2 & 3 closed
Parallel port (J15) select disabled	W4	pins 3 & 4 closed
í IRQ3 select serial port 2 (J14)	W5	pins 1 & 2 closed
IRQ3 select serial port 1 (J13)	W5	pins 2 & 3 closed
IRQ3 disabled	W5	pins 3 & 4 closed
í IRQ4 select serial port 1 (J13)	W6	pins 2 & 3 closed
IRQ4 select serial port 2 (J14)	W6	pins 1 & 2 closed
IRQ4 disabled	W6	pins 3 & 4 closed
í IRQ5 disabled	W7	pins 3 & 4 closed
IRQ5 select serial port 2 (J14)	W7	pins 1 & 2 closed
IRQ5 select serial port 1 (J13)	W7	pins 2 & 3 closed
í IRQ9 disabled	W8	pins 3 & 4 closed
IRQ9 select serial port 2 (J14)	W8	pins 1 & 2 closed
IRQ9 select serial port 1 (J13)	W8	pins 2 & 3 closed
í Floppy drive interface enabled	W9	pins 1 & 2 closed
Floppy drive interface disabled	W9	pins 2 & 3 closed
í IDE interface enabled	W10	pins 1 & 2 closed
IDE interface disabled	W10	pins 2 & 3 closed
í Monitor type select color	W11	pins 1 & 2 closed
Monitor type select monochrome	W11	pins 2 & 3 closed
í Speaker select internal	W12	pins 1 & 2 closed
Speaker select external	W12	pins 2 & 3 closed
í Factory configured - do not alter	W13	open
í Pipeline mode enabled	W14	pins 1 & 2 closed
Pipeline mode disabled	W14	pins 2 & 3 closed