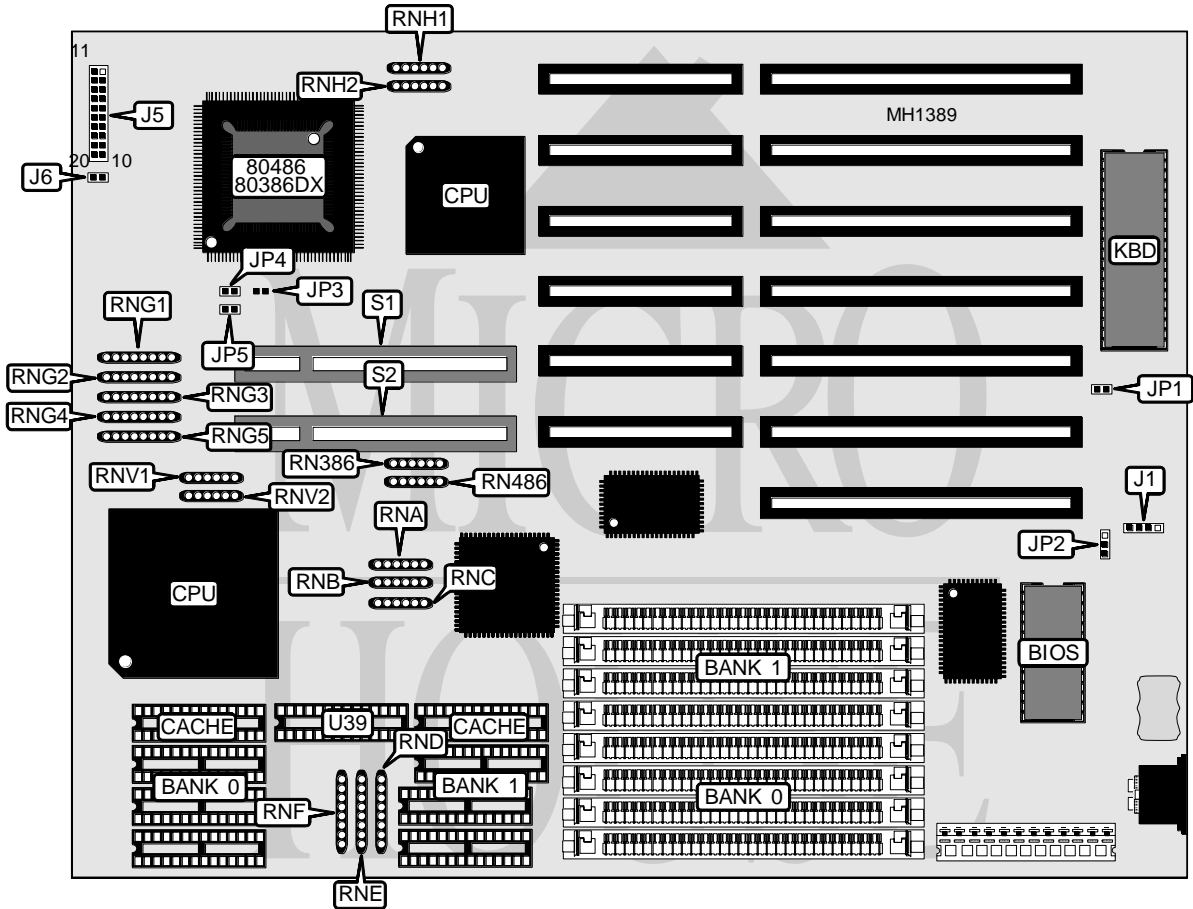


TMC RESEARCH CORPORATION

PAT34PV

Processor	80386DX/CX486DLC/80486SX/80487SX/80486DX/ODP486SX 80486DX2/ODP586SX
Processor Speed	25/33/40/50(internal)/50/66(internal)MHz
Chip Set	OPTI
Max. Onboard DRAM	32MB
Cache	64/128/256KB
BIOS	AMI
Dimensions	235mm x 220mm
I/O Options	None
NPU Options	80387



CONNECTIONS			
Funcation	Location	Purpose	Location
External battery	J1	Reset switch	J5/pins 9 & 19
Speaker	J5/pins 1 - 4	IDE interface LED	J5/pins 10 & 20
Turbo switch	J5/pins 7 & 17	Power LED & keylock	J5/pins 11 - 15
Turbo LED	J5/pins 8 & 18	IDE interface LED	J6

Continued on next page . . .

TMC RESEARCH CORPORATION
PAT34PV

... continued from previous page

USER CONFIGURABLE SETTINGS		
Function	Location	Setting
í Monitor type select color	JP1	closed
Monitor type select monochrome	JP1	open
í CMOS memory normal (internal battery)	JP2	pins 2 & 3 closed
CMOS memory normal (external external)	JP2	open
CMOS memory clear	JP2	pins 1 & 2 closed
íFactory configured - do not alter	JP3	N/A
í VESA bus speed select ≤ 33MHz	JP4	open
VESA bus speed select > 33MHz	JP4	closed
í VESA bus wait states select 0 (CPU ≤ 33MHz)	JP5	open
VESA bus wait state select 1 (CPU > 33MHz)	JP5	closed

DRAM CONFIGURATION		
Size	Bank 0	Bank 1
1MB	(4) 256K x 9	NONE
2MB	(4) 256K x 9	(4) 256K x 9
4MB	(4) 1M x 9	NONE
5MB	(4) 256K x 9	(4) 1M x 9
8MB	(4) 1M x 9	(4) 1M x 9
16MB	(4) 4M x 9	NONE
20MB	(4) 1M x 9	(4) 4M x 9
32MB	(4) 4M x 9	(4) 4M x 9

CACHE CONFIGURATION			
Size	Cache	Location	TAG(U39)
64KB	(8) 8K x 8	Banks 0 & 1	(1) 8K x 8
128KB	(4) 32K x 8	Bank 0	(1) 8K x 8
256KB	(8) 32K x 8	Banks 0 & 1	(1) 32K x 8

CACHE RESISTOR NETWORK CONFIGURATION			
Size	RND	RNE	RNF
64KB	closed	open	open
128KB	open	closed	open
256KB	open	open	closed

Continued on next page...

TMC RESEARCH CORPORATION

PAT34PV

... continued from previous page

CPU CONFIGURATION					
CPU	RNA	RNB	RNC	RN386	RN486
80486DX2	closed	open	open	open	closed
ODP487SX	open	closed	closed	open	closed
80486DX	closed	open	open	open	closed
80487SX	open	closed	open	open	closed
80486SX	open	open	open	open	closed
CX486DLC	N/A	N/A	N/A	closed	open
80386DX	N/A	N/A	N/A	closed	open

CPU SPEED RESISTOR NETWORK CONFIGURATION					
Speed	RNG1	RNG2	RNG3	RNG4	RNG5
66(internal)MHz	N/A	N/A	open	closed	open
50MHz	N/A	N/A	open	open	closed
50(internal)MHz	N/A	N/A	closed	open	open
50(internal)MHz	N/A	N/A	closed	open	open
40MHz/486	N/A	N/A	open	closed	open
40MHz/386	open	closed	open	closed	open
33MHz/486	N/A	N/A	open	closed	open
33MHz/386	closed	open	open	closed	open
25MHz	N/A	N/A	closed	open	open

VESA LOCAL BUS CONFIGURATION		
VESA cards supported	RNV1	RNV2
2	open	closed
1	closed	open

Note: The manufacturer does not recommend using the two card setting with a 486DX/50MHz