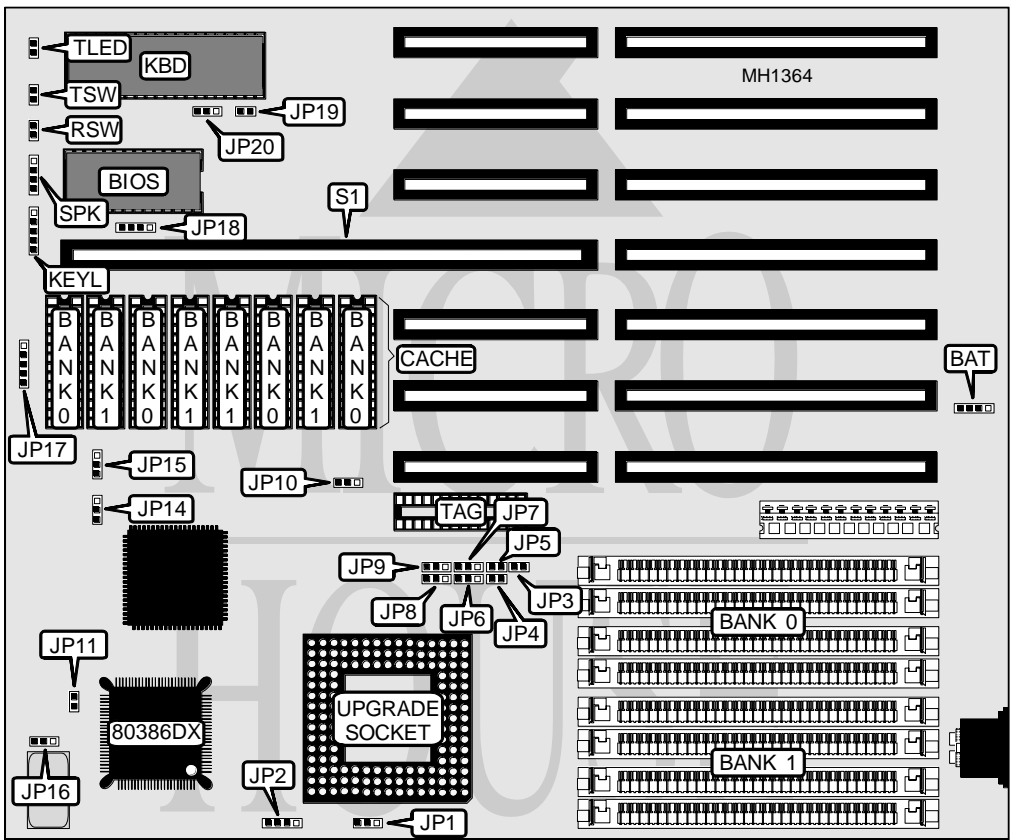


# NIC TECHNOLOGY, INC.

## U N H 4 3 3 L

<b>Processor</b>	80386DX/80486SX/80487SX/80486DX/80486DX2
<b>Processor Speed</b>	20/25/33/40/50(internal)/50/66(internal)
<b>Chip Set</b>	UNI
<b>Max. Onboard DRAM</b>	32MB
<b>SRAM Cache</b>	32/64/128/256KB
<b>BIOS</b>	AMI
<b>Dimensions</b>	250mm x 220mm
<b>I/O Options</b>	32-bit proprietary local bus
<b>NPU Options</b>	80387SX



CONNECTIONS			
Purpose	Location	Purpose	Location
External battery	BAT	Speaker	SPK
Power LED & keylock	KEYL	Turbo LED	TLED
Reset switch	RSW	Turbo switch	TSW
32-bit local bus card	S1		

Note: The 32-bit local bus slot cannot be used if the CPU is a 386DX or a 486DX-50MHz.

Continued on next page . . .

**NIC TECHNOLOGY, INC.**  
**U N H 4 3 3 L**

... continued from previous page

USER CONFIGURABLE SETTINGS		
Function	Jumper	Position
í Monitor type select color	JP19	open
Monitor type select monochrome	JP19	closed

DRAM CONFIGURATION		
Size	Bank 0	Bank 1
1MB	(4) 256K x 9	NONE
2MB	(4) 256K x 9	(4) 256K x 9
4MB	(4) 1M x 9	NONE
8MB	(4) 1M x 9	(4) 1M x 9
16MB	(4) 4M x 9	NONE
20MB	(4) 1M x 9	(4) 4M x 9
32MB	(4) 4M x 9	(4) 4M x 9

CPU TYPE CONFIGURATION							
Type	JP10	JP11	JP14	JP15	JP16	JP18	JP20
80486	pins 1 & 2	closed	pins 1 & 2	pins 1 & 2	pins 1 & 2	pins 3 & 4	pins 2 & 3
80386	pins 2 & 3	open	pins 2 & 3	pins 2 & 3	pins 2 & 3	pins 1 & 2	pins 1 & 2

Note: Pins designated should be in the closed position.

486CPU TYPE CONFIGURATION		
Type	JP1	JP2
80486DX2	pins 1 & 2 closed	pins 1 & 2 and 3 & 4 closed
80486DX	pins 1 & 2 closed	pins 1 & 2 and 3 & 4 closed
80487SX	pins 2 & 3 closed	pins 1 & 2 and 3 & 4 closed
80486SX	open	pins 2 & 3 closed

SRAM CONFIGURATION			
Size	Cache SRAM	Location	TAG
32KB	(4) 8K x 8	Bank 0	(1) 8K x 8
64KB	(8) 8K x 8	Banks 0 & 1	(1) 8K x 8
128KB	(4) 32K x 8	Bank 0	(1) 32K x 8
256KB	(8) 32K x 8	Banks 0 & 1	(1) 32K x 8

SRAM JUMPER CONFIGURATION								
Size	JP3	JP4	JP5	JP6	JP7	JP8	JP9	JP17
32KB	open	open	open	pins 2 & 3	pins 2 & 3	pins 1 & 2	pins 2 & 3	pins 2 & 3
64KB	open	open	closed	pins 1 & 2	pins 2 & 3	pins 2 & 3	pins 2 & 3	pins 1 & 2
128KB	open	closed	closed	pins 2 & 3	pins 1 & 2	pins 2 & 3	pins 2 & 3	pins 1&2 and 3&4
256KB	closed	closed	closed	pins 2 & 3	pins 2 & 3	pins 2 & 3	pins 1 & 2	pins 1&2 and 4&5

Note: Pins designated should be in the closed position.