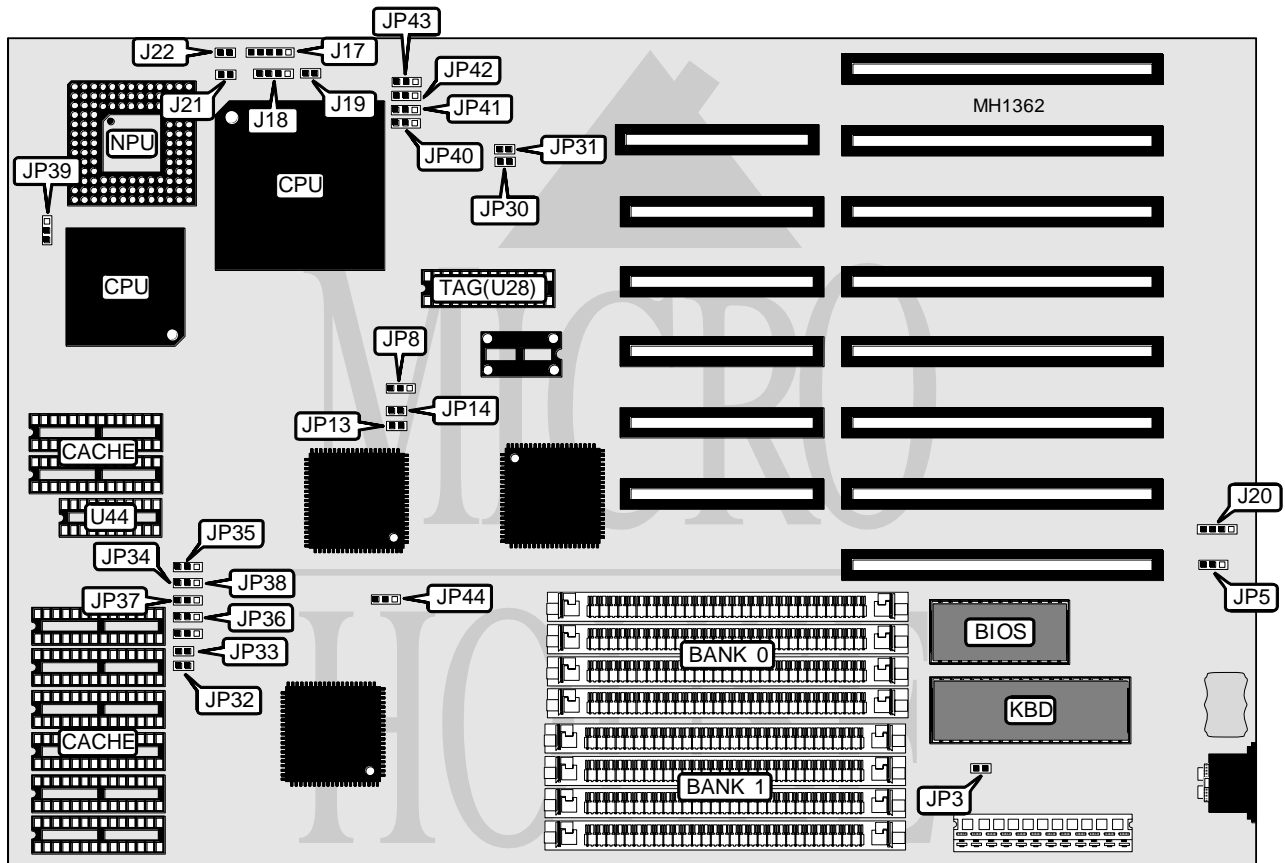


SOYO COMPUTER CO., LTD.

SY - 2 4 A

Processor 80386DX/80486SX/80486DX/80486DX2
Processor Speed 25/33/40/50(internal)/50/66(internal)MHz
Chip Set CONTAQ
Max. Onboard DRAM 32MB
Cache 64/256KB
BIOS AMI
Dimensions 330mm x 217mm
I/O Options None
NPU Options 80387/3167



CONNECTIONS			
Purpose	Location	Purpose	Location
Power LED & keylock	J17	External battery	J20
Speaker	J18	Turbo switch	J21
Reset switch	J19	Turbo LED	J22

Continued on next page . . .

SOYO COMPUTER CO., LTD.
SY - 2 4 A

... continued from previous page

USER CONFIGURABLE SETTINGS		
Function	Jumper	Position
í Monitor type select monochrome	JP3	Open
Monitor type select color	JP3	Closed
í CMOS memory normal operation	JP5	pins 1 & 2 closed
CMOS memory clear	JP5	pins 2 & 3 closed

DRAM CONFIGURATION		
Size	Bank 0	Bank 1
1MB	(4) 256K x 9	NONE
2MB	(4) 256K x 9	(4) 256K x 9
4MB	(4) 1M x 9	NONE
5MB	(4) 1M x 9	(4) 256K x 9
8MB	(4) 1M x 9	(4) 1M x 9
16MB	(4) 4M x 9	NONE
17MB	(4) 4M x 9	(4) 256K x 9
20MB	(4) 4M x 9	(4) 1M x 9
32MB	(4) 4M x 9	(4) 4M x 9

CACHE CONFIGURATION				
Size	Bank 0	Bank 1	TAG (U28)	Dirty Bit (U44)
64KB	(4) 8K x 8	(4) 8K x 8	(1) 8K x 8	(1) 16K x 4
256KB	(4) 32K x 8	(4) 32K x 8	(1) 32K x 8	(1) 16K x 4

Note: Dirty bit need only be filled if writeback mode is selected in the CMOS-advanced chipset setup.

CACHE JUMPER CONFIGURATION						
Size	JP30	JP31	JP32	JP33	JP34	JP35
64KB	Open	Open	Open	Open	Open	2 & 3
256KB	Closed	Closed	Closed	Closed	1 & 2	2 & 3

Note: Pins designated should be in the closed position.

CPU TYPE CONFIGURATION									
Type	JP36	JP37	JP38	JP39	JP40	JP41	JP42	JP43	JP44
80386DX	2 & 3	2 & 3	2 & 3	2 & 3	2 & 3	2 & 3	2 & 3	2 & 3	2 & 3
80486SX	1 & 2	1 & 2	1 & 2	1 & 2	1 & 2	1 & 2	1 & 2	1 & 2	1 & 2
80486DX	1 & 2	1 & 2	1 & 2	1 & 2	2 & 3	2 & 3	2 & 3	2 & 3	1 & 2
80486DX2	1 & 2	1 & 2	1 & 2	1 & 2	2 & 3	2 & 3	2 & 3	2 & 3	1 & 2

Note: Pins designated should be in the closed position.

Continued on next page . . .

SOYO COMPUTER CO., LTD.
SY - 2 4 A

... continued from previous page

CPU SPEED CONFIGURATION				
Speed	OSC2	JP8	JP13	JP14
25/50MHz	25MHz	pins 1 & 2 closed	Open	Closed
25/50MHz	50MHz	pins 2 & 3 closed	Open	Closed
33/66MHz	33.33MHz	pins 1 & 2 closed	Closed	Open
33/66MHz	66.667MHz	pins 2 & 3 closed	Closed	Open
40MHz	40MHz	pins 1 & 2 closed	Open	Open
40MHz	80MHz	pins 2 & 3 closed	Open	Open
50MHz	50MHz	pins 1 & 2 closed	Closed	Closed