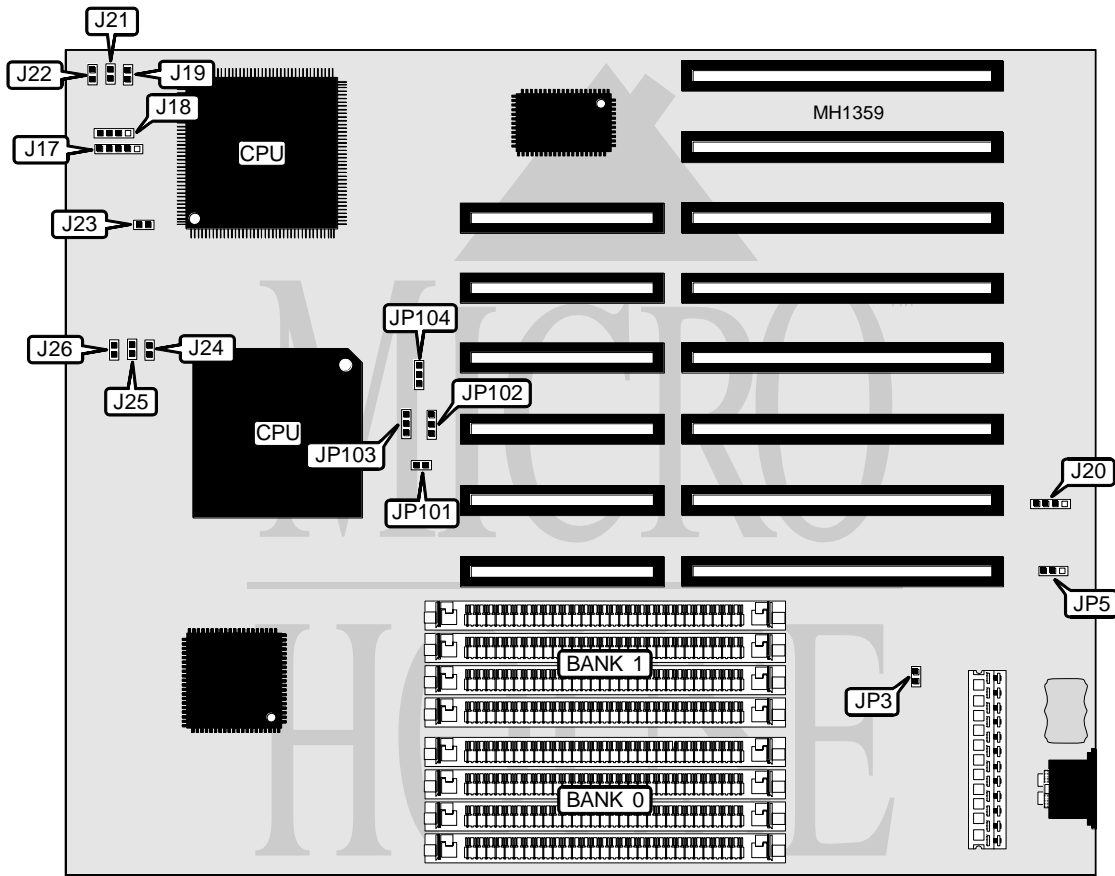


SOYO COMPUTER CO., LTD.
SY - 2 3 D

| | |
|--------------------------|-------------------------------------------|
| Processor | 80486SX/80487SX/80486DX/ODP486SX/80486DX2 |
| Processor Speed | 20/25/33/50(internal)/66(internal)MHz |
| Chip Set | ESEQ |
| Max. Onboard DRAM | 32MB |
| Cache | None |
| BIOS | AMI |
| Dimensions | 241mm x 220mm |
| I/O Options | None |
| NPU Options | None |



| CONNECTIONS | | | |
|---------------------|----------|------------------|----------|
| Purpose | Location | Purpose | Location |
| Power LED & keylock | J17 | External battery | J20 |
| Speaker | J18 | Turbo switch | J21 |
| Reset switch | J19 | Turbo LED | J22 |

Continued on next page . . .

SOYO COMPUTER CO., LTD.

SY - 23D

... continued from previous page

USER CONFIGURABLE SETTINGS

| Function | Jumper | Position |
|------------------------------------|--------|-------------------|
| í Monitor type select monochrome | JP3 | Open |
| Monitor type select color | JP3 | Closed |
| í CMOS memory normal operation | JP5 | pins 1 & 2 closed |
| CMOS memory clear | JP5 | pins 2 & 3 closed |
| í PGA or PQFP CPU enabled | J23 | Open |
| PGA CPU enabled, PQFP CPU disabled | J23 | Closed |

Note: If using the "PGA or PQFP" setting (J23 open) please note that only one CPU can be installed.

DRAM CONFIGURATION

| Size | Bank 0 | Bank 1 |
|------|--------------|--------------|
| 1MB | (4) 256K x 9 | NONE |
| 2MB | (4) 256K x 9 | (4) 256K x 9 |
| 4MB | (4) 1M x 9 | NONE |
| 5MB | (4) 256K x 9 | (4) 1M x 9 |
| 8MB | (4) 1M x 9 | (4) 1M x 9 |
| 16MB | (4) 4M x 9 | NONE |
| 32MB | (4) 4M x 9 | (4) 4M x 9 |

CPU TYPE CONFIGURATION

| Type | JP101 | JP102 | JP103 | JP104 |
|----------|--------|-------------------|-------------------|-------------------|
| 80486SX | Open | pins 2 & 3 closed | open | pins 2 & 3 closed |
| 80487SX | Closed | pins 1 & 2 closed | pins 2 & 3 closed | pins 2 & 3 closed |
| 80486DX | Closed | pins 1 & 2 closed | pins 1 & 2 closed | pins 2 & 3 closed |
| ODP486SX | Closed | pins 1 & 2 closed | pins 2 & 3 closed | pins 2 & 3 closed |
| 80486DX2 | Closed | pins 1 & 2 closed | pins 1 & 2 closed | pins 2 & 3 closed |

CPU SPEED CONFIGURATION

| Speed | OSC U24 | J24 | J25 | J26 |
|--------|----------|--------|--------|--------|
| 20MHz | 40MHz | Open | Closed | Closed |
| 25MHz | 50MHz | Closed | Open | Closed |
| 33MHz | 66.67MHz | Closed | Closed | Open |
| 50iMHz | 50MHz | Closed | Open | Closed |
| 66iMHz | 66.67MHz | Closed | Closed | Open |

Note: The location of socket U24 is unknown.