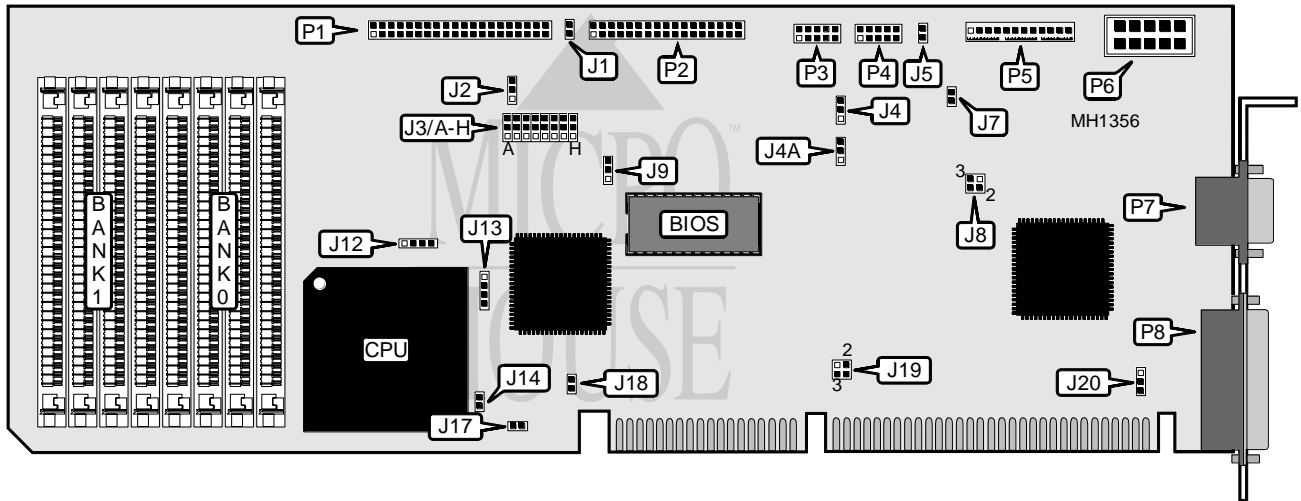


MNC INTERNATIONAL, INC.

MNC 1144 COMPLETE 486SBC (REV. 2.10)

Processor	80486SX/80487SX/80486DX/8486DX2
Processor Speed	25/33/50(internal)/50/66(internal)
Chip Set	VSLI
Max. Onboard DRAM	32MB
Cache	None
BIOS	Phoenix
Dimensions	333mm x 107mm
I/O Options	Floppy drive interface, IDE interface, parallel port, serial port (2), VGA port
NPU Options	None



CONNECTIONS			
Purpose	Location	Purpose	Location
IDE interface LED	J1	Serial port 2	P4
Turbo LED	J5	Front panel switches	P5
IDE interface	P1	LCD screen	P6
Floppy drive interface	P2	VGA port	P7
Serial port 1	P3	Parallel port	P8

DRAM CONFIGURATION		
Size	Bank 0	Bank 1
2MB	(4) 256K x 9	(4) 256K x 9
4MB	(4) 1M x 9	NONE
5MB	(4) 256K x 9	(4) 1M x 9
8MB	(4) 1M x 9	(4) 1M x 9
16MB	(4) 4M x 9	NONE
20MB	(4) 1M x 9	(4) 4M x 9
32MB	(4) 4M x 9	(4) 4M x 9

Continued on next page . . .

MNC INTERNATIONAL, INC.

MNC 1144 COMPLETE 486SBC (REV. 2.10)

... continued from previous page

USER CONFIGURABLE SETTINGS		
Function	Jumper	Position
í IDE interface enabled	J2	pins 2 & 3 closed
IDE interface disabled	J2	pins 1 & 2 closed
í Floppy drive interface select normal operation	J3A	pins 2 & 3 closed
Floppy drive interface select encoded	J3A	pins 1 & 2 closed
í Floppy drive interface enabled	J3B	pins 2 & 3 closed
Floppy drive interface disabled	J3B	pins 1 & 2 closed
í J3 Jumper settings enabled	J3H	pins 2 & 3 closed
J3 Jumper settings disabled	J3H	pins 1 & 2 closed
Watchdog Timer interval select 1.2 second	J4	pins 1 & 2 closed
Watchdog Timer interval select 150ms	J4	pins 2 & 3 closed
Watchdog Timer interval select 600ms	J4	open
í Watchdog Timer enabled	J4A	pins 1 & 2 closed
Watchdog Timer disabled	J4A	pins 2 & 3 closed
í Monitor type select color	J7	closed
Monitor type select monochrome	J7	open
Paralell port select Uni-directional	J9	pins 2 & 3 closed
Paralell port select Bi-directional	J9	pins 1 & 2 closed
í Bus cycle lock enabled	J14	closed
Bus cycle lock disabled	J14	open
í Burst mode enabled	J17	closed
Burst mode disabled	J17	open
í Secondary cache disabled	J18	open
Secondary cache enabled	J18	closed
í VGA port interrupt request select none	J20	pins 1 & 2 closed
VGA port interrupt request select IRQ2/9	J20	pins 2 & 3 closed
Note: To disable Watchdog Timer (J4A) you must cut the trace between pins 1 & 2 on back of board.		

SERIAL PORT CONFIGURATION				
Serial port 1	Serial port 2	J3C	J3D	J3E
COM1	COM2	pins 2 & 3	pins 2 & 3	pins 2 & 3
COM1	Disabled	pins 2 & 3	pins 1 & 2	pins 2 & 3
COM2	Disabled	pins 1 & 2	pins 1 & 2	pins 2 & 3
COM2	COM1	pins 1 & 2	pins 2 & 3	pins 2 & 3
Disabled	COM1	pins 1 & 2	pins 2 & 3	pins 1 & 2
Disabled	COM2	pins 2 & 3	pins 2 & 3	pins 1 & 2
Disabled	Disabled	pins 1 & 2	pins 1 & 2	pins 1 & 2
Note: Pins designated should be in the closed position.				

Continued on next page ...

MNC INTERNATIONAL, INC.

MNC 1144 COMPLETE 486SBC (REV. 2.10)

... continued from previous page

PARALLEL PORT CONFIGURATION		
Function	J3F	J3G
í Parallel port (P8) select LPT1 at 378h	pins 2 & 3 closed	pins 2 & 3 closed
Parallel port (P8) select LPT2 at 278h	pins 1 & 2 closed	pins 2 & 3 closed
Parallel port (P8) select LPT3 at 3BCh	pins 2 & 3 closed	pins 1 & 2 closed
Parallel port (P8) disabled	pins 1 & 2 closed	pins 1 & 2 closed

LCD DISPLAY TYPE CONFIGURATION	
Type	J8
0	open
1	pins 1 & 2 closed
2	pins 3 & 4 closed
3	pins 1 & 2 and 3 & 4 closed

FLASH MEMORY ADDRESS CONFIGURATION	
Address	J19
C0000 - C7FFF	open
C8000 - CFFFF	pins 3 & 4 closed
D0000 - D7FFF	pins 1 & 2 closed
D8000 - DFFFF	pins 1 & 2 and 3 & 4 closed

CPU TYPE CONFIGURATION		
Type	J12	J13
80486DX2	pins 1 & 2 and 3 & 4 closed	pins 3 & 4 closed
80846DX	pins 1 & 2 and 3 & 4 closed	pins 3 & 4 closed
80487SX	pins 1 & 2 and 3 & 4 closed	pins 1 & 2 closed
80486SX	pins 2 & 3 closed	pins 2 & 3 closed