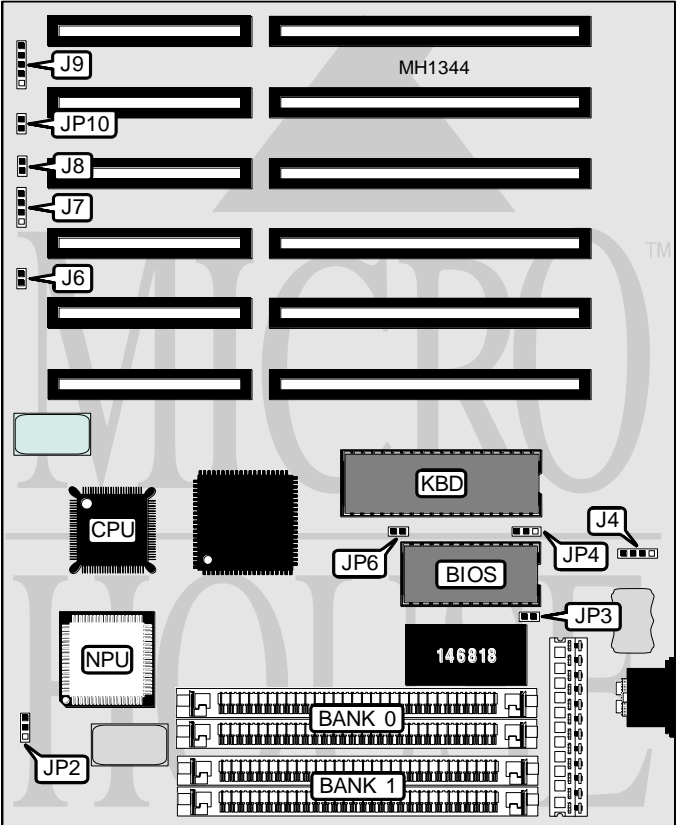


ACER, INC.
386 - A S

| | |
|--------------------------|------------------|
| Processor | 80386SX/CX486SLC |
| Processor Speed | 33MHz |
| Chip Set | ALI |
| Max. Onboard DRAM | 16MB |
| SRAM Cache | None |
| BIOS | AMI |
| Dimensions | 178mm x 218mm |
| I/O Options | None |
| NPU Options | 80387SX |



| CONNECTIONS | | | |
|------------------|----------|---------------------|----------|
| Purpose | Location | Purpose | Location |
| External battery | J4 | Turbo LED | J8 |
| Reset switch | J6 | Power LED & keylock | J9 |
| Speaker | J7 | Turbo switch | JP10 |

Continued on next page . . .

ACER, INC.

386 - A S

... continued from previous page

USER CONFIGURABLE SETTINGS

| Function | Jumper | Position |
|--|--------|-------------------|
| í NPU mode select synchronous with CPU | JP2 | pins 1 & 2 closed |
| NPU mode select asynchronous with CPU | JP2 | pins 2 & 3 closed |
| í Factory configured - do not alter | JP3 | open |
| í Monitor type select color | JP4 | pins 1 & 2 closed |
| Monitor type select monochrome | JP4 | pins 2 & 3 closed |
| í Parity check enabled | JP6 | closed |
| Parity check disabled | JP6 | open |

DRAM CONFIGURATION

| Size | Bank 0 | Bank 1 |
|-------|--------------|--------------|
| 512KB | (2) 256K x 9 | NONE |
| 1MB | (2) 256K x 9 | (2) 256K x 9 |
| 2MB | (2) 1M x 9 | NONE |
| 4MB | (2) 1M x 9 | (2) 1M x 9 |
| 8MB | (2) 4M x 9 | NONE |
| 16MB | (2) 4M x 9 | (2) 4M x 9 |