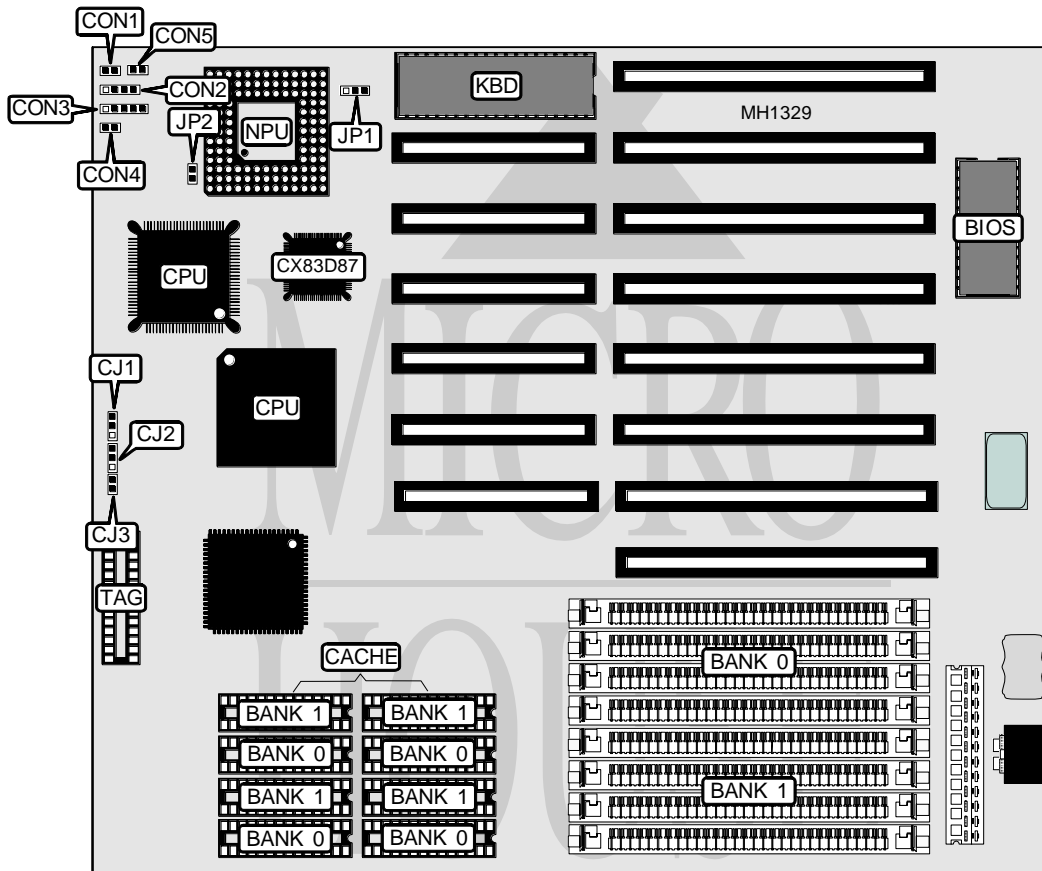


ASUS COMPUTER INTERNATIONAL

ISA - 386SIQ

Processor 80386DX/CX486DLC
Processor Speed 33/40MHz
Chip Set SIS
Max. Onboard DRAM 32MB
SRAM Cache 64/128/256KB
BIOS AMI
Dimensions 220mm x 240mm
I/O Options None
NPU Options 80387/CX83D87/3167



CONNECTIONS

Purpose	Location	Purpose	Location
Reset	CON1	Turbo LED	CON4
Speaker	CON2	Turbo switch	CON5
Power LED & keylock	CON3		

Continued on next page . . .

ASUS COMPUTER INTERNATIONAL

ISA-386SIQ

... continued from previous page

USER CONFIGURABLE SETTINGS		
Function	Jumper	Position
í Monitor type select monochrome	JP1	pins 2 & 3 closed
Monitor type select color	JP1	pins 1 & 2 closed
í PQFP CPU disabled	JP2	open
PQFP CPU enabled	JP2	closed

DRAM CONFIGURATION		
Size	Bank 0	Bank 1
1MB	(4) 256K x 9	NONE
2MB	(4) 256K x 9	(4) 256K x 9
4MB	(4) 1M x 9	NONE
8MB	(4) 1M x 9	(4) 1M x 9
16MB	(4) 4M x 9	NONE
20MB	(4) 4M x 9	(4) 1M x 9
32MB	(4) 4M x 9	(4) 4M x 9

SRAM CONFIGURATION			
Size	Cache	Location	TAG
64KB	(8) 8K x 8	Banks 0 & 1	(1) 8K x 8
128KB	(4) 32K x 8	Bank 0	(1) 8K x 8
256KB	(8) 32K x 8	Banks 0 & 1	(1) 32K x 8

SRAM JUMPER CONFIGURATION			
Size	Jumper CJ1	Jumper CJ2	Jumper CJ3
64KB	pins 1 & 2 closed	pins 1 & 2 closed	open
128KB	open	pins 1 & 2 closed	closed
256KB	pins 2 & 3 closed	pins 2 & 3 closed	open