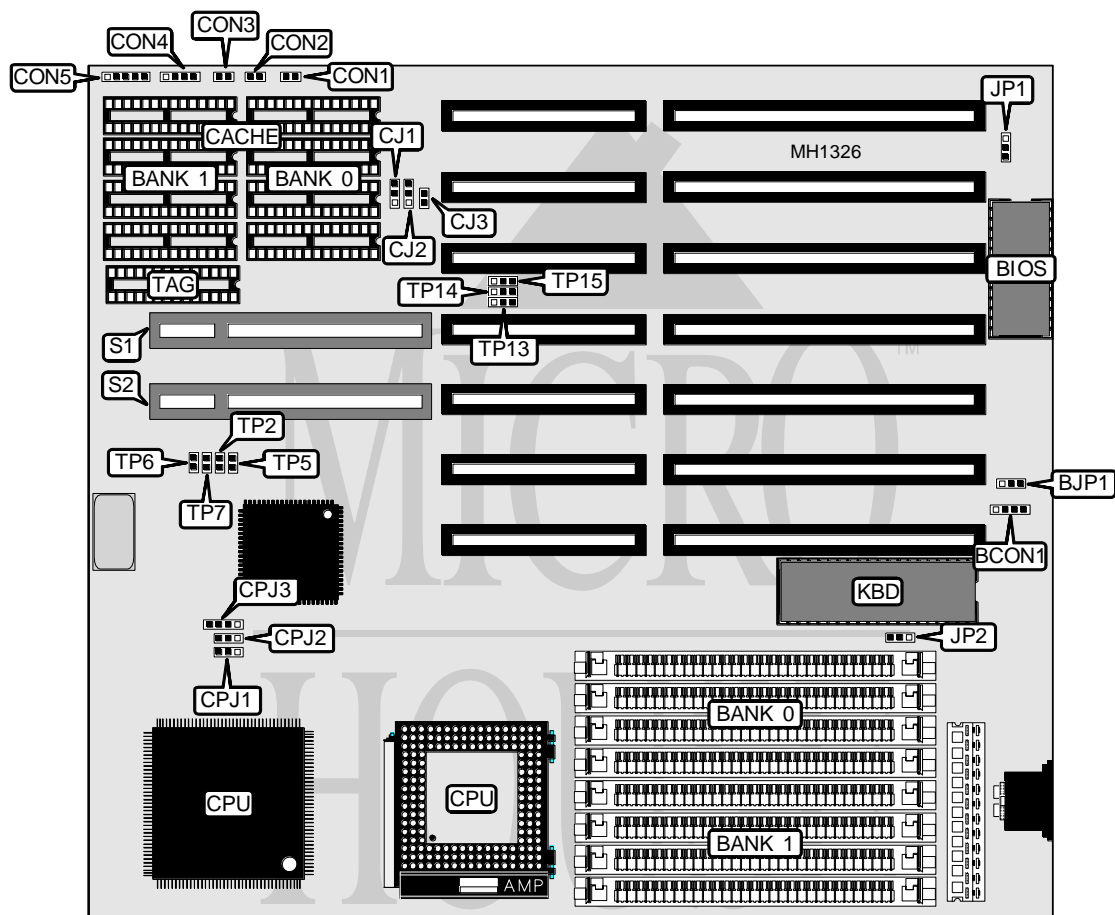


# ASUS COMPUTER INTERNATIONAL

## VL/ISA-486SV2 VERSION 2.4

Processor	80486SX/80487SX/80486DX/80486DX2
Processor Speed	20/25/33/50(internal)/50/66(internal)MHz
Chip Set	SIS
Max. Onboard DRAM	32MB
SRAM Cache	64/128/256KB
BIOS	AMI
Dimensions	220mm x 240mm
I/O Options	32-bit VESA card slot (2)
NPU Options	None



CONNECTIONS			
Purpose	Location	Purpose	Location
External battery	BCON1	Speaker	CON4
Turbo switch	CON1	Power LED & keylock	CON5
Turbo LED	CON2	32-bit VESA card (2)	S1 & S2
Reset	CON3		

Continued on next page . . .

# ASUS COMPUTER INTERNATIONAL

## VL/ISA-486SV2 VERSION 2.4

... continued from previous page

USER CONFIGURABLE SETTINGS		
Function	Jumper	Position
í Battery select internal	BJP1	pins 1 & 2 closed
Battery select external	BJP1	pins 2 & 3 closed
í CPU speed select 25/33/50MHz	JP1	pins 2 & 3 closed
CPU speed select 20MHz	JP1	pins 1 & 2 closed
í Monitor type select monochrome	JP2	pins 1 & 2 closed
Monitor type select color	JP2	pins 2 & 3 closed
í Factory configured - do not alter	TP2	closed
í Factory configured - do not alter	TP5	open
í Factory configured - do not alter	TP6	closed
í Factory configured - do not alter	TP7	open
í Factory configured - do not alter	TP13	pins 1 & 2 closed
í Factory configured - do not alter	TP14	pins 2 & 3 closed
í Factory configured - do not alter	TP15	pins 2 & 3 closed

DRAM CONFIGURATION		
Size	Bank 0	Bank 1
1MB	(4) 256K x 9	NONE
2MB	(4) 256K x 9	(4) 256K x 9
4MB	(4) 1M x 9	NONE
8MB	(4) 1M x 9	(4) 1M x 9
16MB	(4) 4M x 9	NONE
20MB	(4) 4M x 9	(4) 1M x 9
32MB	(4) 4M x 9	(4) 4M x 9

SRAM CONFIGURATION			
Size	Cache	Location	TAG
64KB	(8) 8K x 8	Banks 0 & 1	(1) 8K x 8
128KB	(4) 32K x 8	Bank 0	(1) 8K x 8
256KB	(8) 32K x 8	Banks 0 & 1	(1) 32K x 8

SRAM JUMPER CONFIGURATION			
Size	Jumper CJ1	Jumper CJ2	Jumper CJ3
64KB	pins 1 & 2 closed	pins 1 & 2 closed	open
128KB	pins 2 & 3 closed	open	closed
256KB	pins 2 & 3 closed	pins 2 & 3 closed	open

CPU JUMPER CONFIGURATION			
CPU	Jumper CPJ1	Jumper CPJ2	Jumper CPJ3
80486DX	pins 2 & 3 closed	pins 1 & 2 and 3 & 4 closed	pins 2 & 3 closed
80487SX	pins 1 & 2 closed	pins 1 & 2 and 3 & 4 closed	pins 1 & 2 closed
80486SX	open	pins 2 & 3 closed	pins 2 & 3 closed