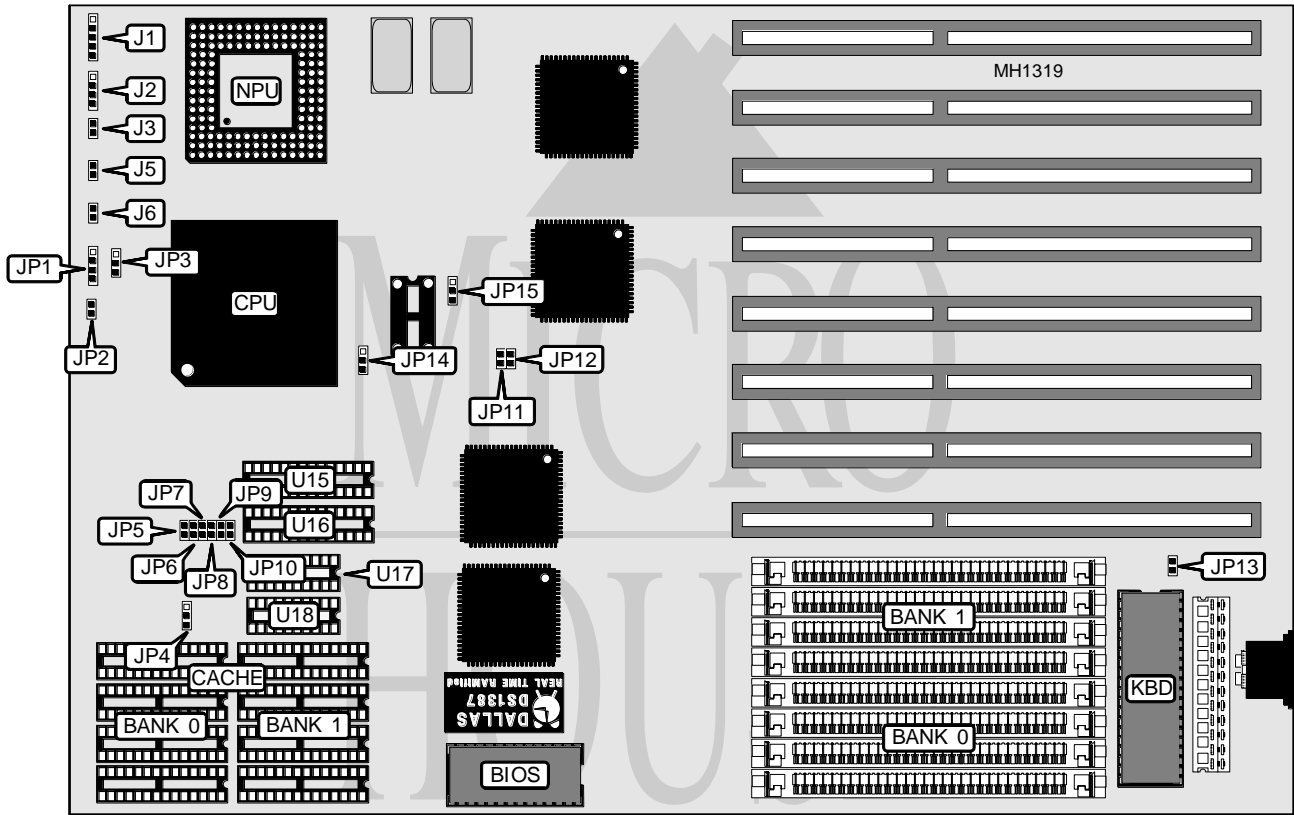


DATAEXPERT CORPORATION

EISA 486WB

Processor	80486SX/80486DX/ODP486SX
Processor Speed	20/25/33/50MHz
Chip Set	OPTI
Max. Onboard DRAM	128MB
SRAM Cache	64/128/256/512KB
BIOS	AMI
Dimensions	330.2mm x 218.4mm
I/O Options	None
NPU Options	4167



CONNECTIONS			
Purpose	Location	Purpose	Location
Power LED & keylock	J1	Turbo switch	J5
Speaker	J2	Turbo LED	J6
Reset switch	J3		

Continued on next page . . .

DATAEXPERT CORPORATION

EISA 486WB

... continued from previous page

USER CONFIGURABLE SETTINGS		
Function	Jumper	Position
Monitor type select color	JP13	closed
Monitor type select monochrome	JP13	open

DRAM CONFIGURATION		
Size	Bank 0	Bank 1
1MB	(4) 256K x 9	NONE
2MB	(4) 256K x 9	(4) 256K x 9
4MB	(4) 1M x 9	NONE
5MB	(4) 256K x 9	(4) 1M x 9
8MB	(4) 1M x 9	(4) 1M x 9
16MB	(4) 4M x 9	NONE
20MB	(4) 1M x 9	(4) 4M x 9
20MB	(4) 4M x 9	(4) 1M x 9
32MB	(4) 4M x 9	(4) 4M x 9
64MB	(4) 16M x 9	NONE
128MB	(4) 16M x 9	(4) 16M x 9

SRAM JUMPER CONFIGURATION				
Jumper	64KB	128KB	256KB	512KB
JP4	pins 2 & 3 closed	pins 1 & 2 closed	pins 2 & 3 closed	pins 1 & 2 closed
JP5	open	open	closed	closed
JP6	open	open	open	closed
JP7	open	closed	closed	closed
JP8	open	closed	closed	closed
JP9	open	open	closed	closed
JP10	open	open	open	closed

SRAM CONFIGURATION					
Size	Cache SRAM	Location	TAG (U15)	TAG (U16)	TAG (U17 & 18)
64KB	(8) 8K x 8	Banks 0 & 1	(1) 8K x 8	NONE	(1) 64K x 1
128KB	(4) 32K x 8	Bank 0	(1) 8K x 8	NONE	(1) 64K x 1
256KB	(8) 32K x 8	Banks 0 & 1	(1) 8K x 8	(1) 8K x 8	(1) 64K x 1
512KB	(4) 128K x 8	Bank 0	(1) 32K x 8	NONE	(1) 64K x 1

CPU JUMPER CONFIGURATION				
CPU	Jumper JP1	Jumper JP2	Jumper JP3	JP15
ODP486SX	pins 1 & 2 and 3 & 4 closed	open	pins 1 & 2 closed	pins 1 & 2 closed
80486DX	pins 1 & 2 and 3 & 4 closed	open	pins 2 & 3 closed	pins 1 & 2 closed
80486SX	pins 2 & 3 closed	closed	open	pins 2 & 3 closed

CPU SPEED CONFIGURATION			
Speed	Jumper JP11	Jumper JP12	JP14
25MHz	open	open	pins 2 & 3 closed
33MHz	open	closed	pins 2 & 3 closed
50MHz	closed	closed	pins 1 & 2 closed