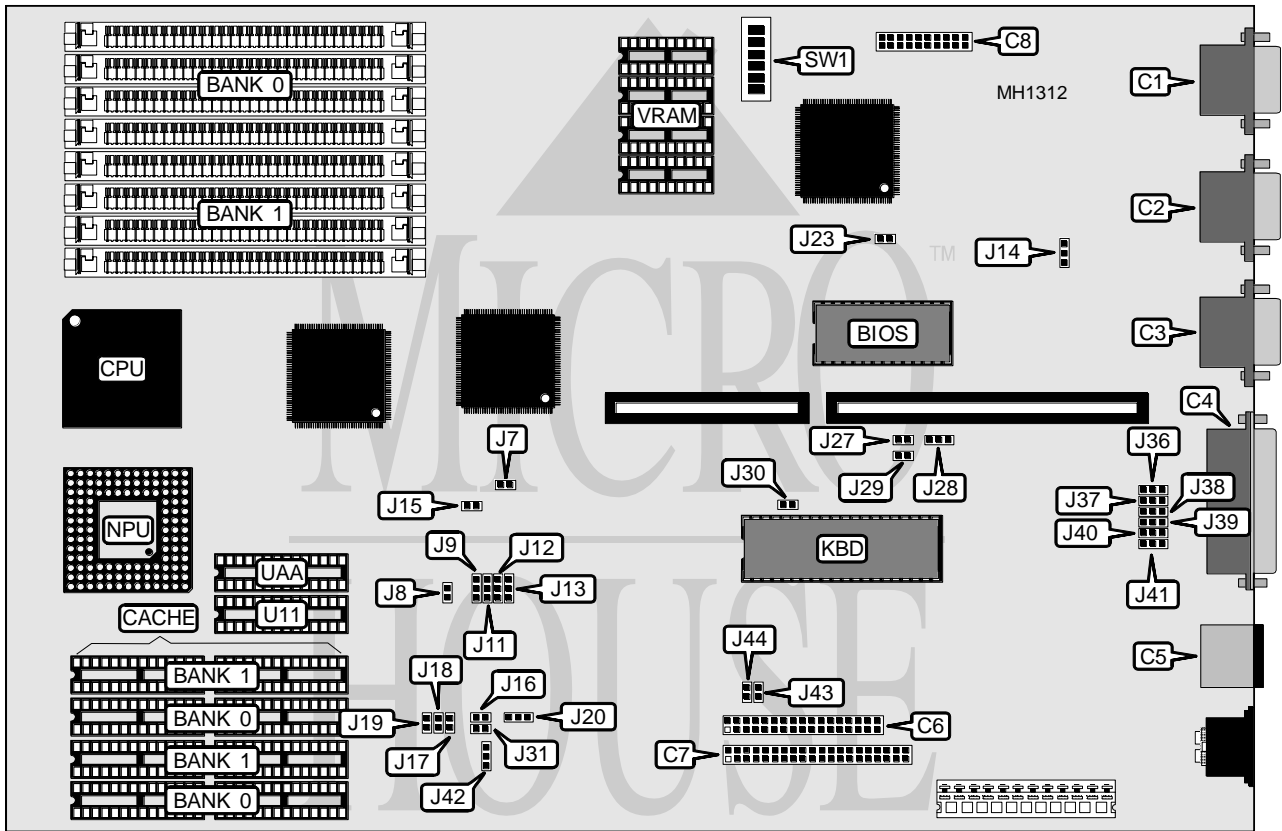


COMMODORE BUSINESS MACHINES, INC.

386DX SYSTEM (PART #368954-01)

Processor	80386DX
Processor Speed	25/33MHz
Chip Set	PC CHIPS
Max. Onboard DRAM	32MB
SRAM Cache	64/128/256KB
BIOS	AMI
Dimensions	330mm x 218mm
I/O Options	Floppy drive interface, IDE interface, parallel port, PS/2 mouse port, serial port (2), VGA port
NPU Options	80387/3167



CONNECTIONS			
Purpose	Location	Purpose	Location
VGA port	C1	PS/2 style mouse port	C5
Serial port 1	C2	Floppy drive interface	C6
Serial port 2	C3	Hard drive interface	C7
Parallel port	C4	Basic connectors (pins unknown)	C8

Continued on next page . . .

COMMODORE BUSINESS MACHINES, INC.

386DX SYSTEM (PART #368954-01)

... continued from previous page

USER CONFIGURABLE SETTINGS		
Function	Jumper	Position
í Combined BIOS enabled	J7	closed
Combined BIOS disabled	J7	open
í Monitor type select color	J14	pins 1 & 2 closed
	J20	pins 2 & 3 closed
Monitor type select color disabled	J14	pins 2 & 3 closed
	J20	pins 1 & 2 closed
íFactory configured - do not alter	J17	unknown
íFactory configured - do not alter	J18	unknown
íFactory configured - do not alter	J19	unknown
íFactory configured - do not alter	J31	unknown
í VGA select zero wait states	J23	closed
VGA select zero wait states disabled	J23	open
í Monitor type select monochrome	J30	open
Monitor type select monochrome disabled	J30	closed
í Floppy drive interface (C6) enabled	J41	pins 1 & 2 closed
í Floppy drive interface (C6) disabled	J41	pins 2 & 3 closed
í Hard drive interface (C7) enabled	J43	closed
	J44	closed
Hard drive interface (C7) disabled	J43	open
	J44	open

DRAM CONFIGURATION		
Size	Bank 0	Bank 1
1MB	(4) 256K x 9	NONE
2MB	(4) 256K x 9	(4) 256K x 9
4MB	(4) 1M x 9	NONE
5MB	(4) 256K x 9	(4) 1M x 9
5MB	(4) 1M x 9	(4) 256K x 9
8MB	(4) 1M x 9	(4) 1M x 9
16MB	(4) 4M x 9	NONE
17MB	(4) 256K x 9	(4) 4M x 9
17MB	(4) 4M x 9	(4) 256K x 9
20MB	(4) 1M x 9	(4) 4M x 9
20MB	(4) 4M x 9	(4) 1M x 9
32MB	(4) 4M x 9	(4) 4M x 9

Continued on next page ...

COMMODORE BUSINESS MACHINES, INC.

386DX SYSTEM (PART #368954-01)

... continued from previous page

SERIAL PORT CONFIGURATION		
Function	Jumper	Position
Serial port 1 (C2) enabled at interrupt IRQ4	J27	closed
Serial port 1 (C2) disabled	J27	open
Serial port 2 (C3) enabled at interrupt select IRQ3	J29	closed
Serial port 2 (C3) disabled	J29	open
Serial port 1 (C2) select COM1	J38	pins 1 & 2 closed
	J39	pins 1 & 2 closed
	J40	pins 1 & 2 closed
Serial port 2 (C3) select COM2	J38	pins 1 & 2 closed
	J39	pins 1 & 2 closed
	J40	pins 1 & 2 closed
Serial port 1 (C2) select COM2	J38	pins 1 & 2 closed
	J39	pins 1 & 2 closed
	J40	pins 2 & 3 closed
Serial port 1 (C2) select COM1	J38	pins 1 & 2 closed
	J39	pins 1 & 2 closed
	J40	pins 2 & 3 closed
Serial port 1 (C2) select COM1	J38	pins 2 & 3 closed
	J39	pins 1 & 2 closed
	J40	pins 1 & 2 closed
Serial port 2 (C3) disabled	J38	pins 2 & 3 closed
	J39	pins 1 & 2 closed
	J40	pins 1 & 2 closed
Serial port 1 (C2) disabled	J38	pins 1 & 2 closed
	J39	pins 2 & 3 closed
	J40	pins 2 & 3 closed
Serial port 2 (C3) select COM1	J38	pins 1 & 2 closed
	J39	pins 2 & 3 closed
	J40	pins 2 & 3 closed
Serial port 1 (C2) disabled	J38	pins 1 & 2 closed
	J39	pins 2 & 3 closed
	J40	pins 1 & 2 closed
Serial port 2 (C3) select COM2	J38	pins 1 & 2 closed
	J39	pins 2 & 3 closed
	J40	pins 1 & 2 closed
Serial port 1 (C2) select COM2	J38	pins 2 & 3 closed
	J39	pins 1 & 2 closed
	J40	pins 2 & 3 closed
Serial port 2 (C3) disabled	J38	pins 2 & 3 closed
	J39	pins 1 & 2 closed
	J40	pins 2 & 3 closed
Serial port 1 & 2 disabled	J38	pins 2 & 3 closed
	J39	pins 2 & 3 closed
	J40	pins 2 & 3 closed

Continued on next page ...

COMMODORE BUSINESS MACHINES, INC.

386DX SYSTEM (PART #368954-01)

... continued from previous page

PARALLEL PORT CONFIGURATION (C4)		
Function	Jumper	Position
Parallel port enabled at IRQ7	J28	pins 2 & 3 closed
Parallel port enabled at IRQ5	J28	pins 1 & 2 closed
Parallel port enable LPT1	J36	pins 2 & 3 closed
	J37	pins 1 & 2 closed
Parallel port enable LPT2	J36	pins 1 & 2 closed
	J37	pins 1 & 2 closed
Parallel port enable LPT3	J36	pins 1 & 2 closed
	J37	pins 2 & 3 closed
Parallel port disabled	J36	pins 2 & 3 closed
	J37	pins 2 & 3 closed

SRAM JUMPER CONFIGURATION								
Size	Jumper J8	Jumper J9	Jumper J11	Jumper J12	Jumper J13	Jumper J15	Jumper J16	Jumper J42
Disabled	closed	pins 1 & 2 closed	pins 1 & 2 closed	N/A	N/A	open	N/A	N/A
64KB	closed	pins 2 & 3 closed	pins 2 & 3 closed	pins 1 & 2 closed	pins 1 & 2 closed	closed	pins 2 & 3 closed	pins 1 & 2 closed
128KB	closed	pins 2 & 3 closed	pins 2 & 3 closed	pins 2 & 3 closed	pins 1 & 2 closed	closed	open	pins 2 & 3 closed
256KB	closed	pins 2 & 3 closed	pins 2 & 3 closed	pins 2 & 3 closed	pins 1 & 2 closed	closed	pins 1 & 2 closed	pins 2 & 3 closed

SRAM CONFIGURATION				
Size	Cache SRAM	Location	TAG (UAA)	TAG (U11)
64KB	(8) 8K x 8	Banks 0 & 1	(1) 8K x 8	(1) 8K x 8
128KB	(4) 32K x 8	Bank 0	(1) 32K x 8	NONE
256KB	(8) 32K x 8	Banks 0 & 1	(1) 32K x 8	(1) 32K x 8

VIDEO SWITCH CONFIGURATION (SW1)					
Mode	switch 1	switch 2	switch 3	switch 4	switch 5
56Hz vertical refresh	open	open	N/A	N/A	N/A
60Hz vertical refresh	open	closed	N/A	N/A	N/A
72Hz vertical refresh	closed	open	N/A	N/A	N/A
Enable interlaced	N/A	N/A	open	open	N/A
60Hz non-interlaced	N/A	N/A	open	closed	N/A
72Hz non-interlaced	N/A	N/A	closed	open	N/A
31.5KHz horizontal scan rate	N/A	N/A	N/A	N/A	open
40KHz horizontal scan rate	N/A	N/A	N/A	N/A	closed

VRAM CONFIGURATION		
Size	VRAM	SW1/switch 6
512KB	(2) 256K x 4	closed
1MB	(4) 256K x 4	open