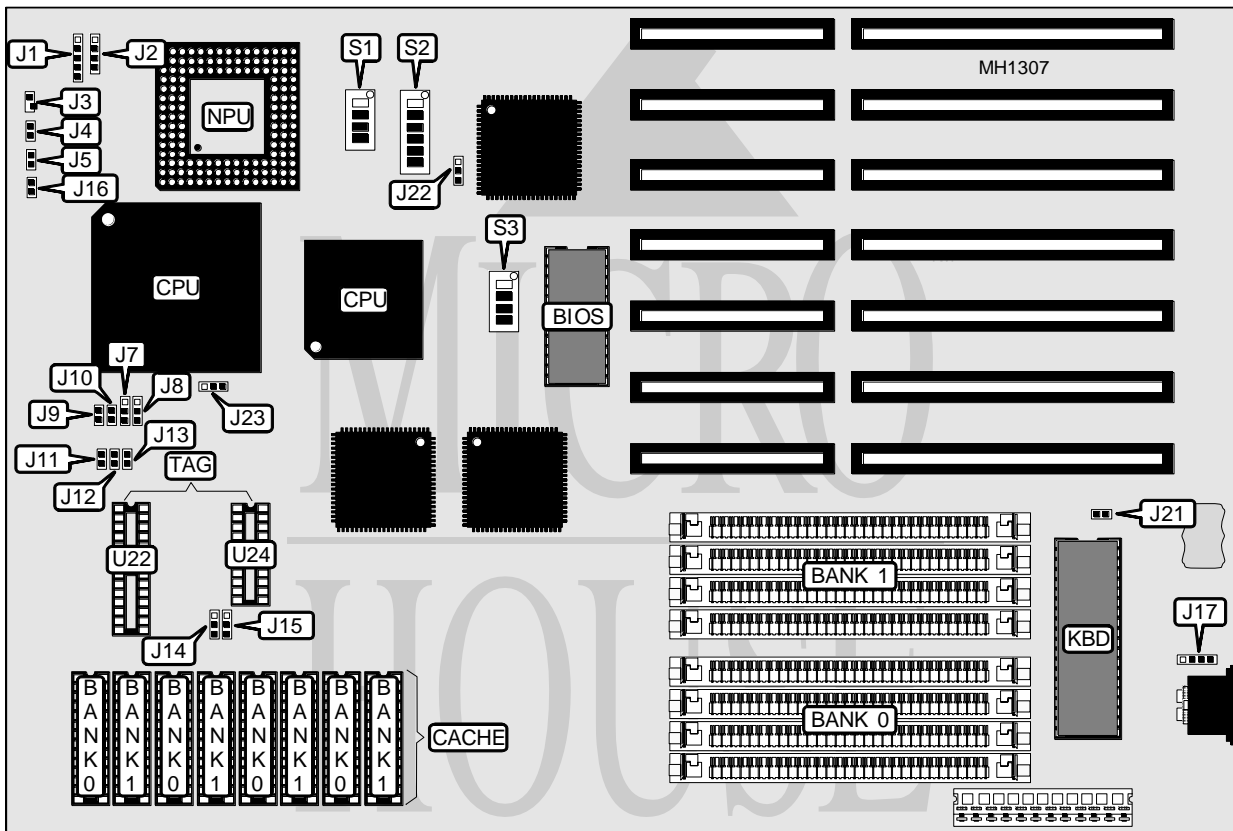


EFA CORPORATION

ECA 33M50

Processor	80386DX/80486SX/80486DX
Processor Speed	16/20/25/33/40/50(internal)/50/66(internal)MHz
Chip Set	UMC
Max. Onboard DRAM	32MB
SRAM Cache	64/128/256KB
BIOS	AMI
Dimensions	330mm x 218mm
I/O Options	None
NPU Options	4167



CONNECTIONS			
Purpose	Location	Purpose	Location
Power LED & keylock	J1	Turbo LED	J4
Speaker	J2	Turbo switch	J5
Reset switch	J3	External battery	J17

Continued on next page . . .

EFA CORPORATION
E C A 3 3 M 5 0

... continued from previous page

USER CONFIGURABLE SETTINGS		
Function	Jumper	Position
í Monitor type select monochrome	J16	open
Monitor type select color	J16	closed
í Factory configured - do not alter	J21	open
BIOS type select 64K	J22	pins 2 & 3 closed
BIOS type select 128K	J22	pins 1 & 2 closed

SRAM CONFIGURATION				
Size	Cache SRAM	Location	TAG (U22)	TAG (U24)
64KB	(8) 8K x 8	Banks 0 & 1	(1) 32K x 8	(1) 16K x 4
128KB	(4) 32K x 8	Bank 0	(1) 32K x 8	(1) 16K x 4
256KB	(8) 32K x 8	Banks 0 & 1	(1) 32K x 8	(1) 16K x 4

SRAM JUMPER CONFIGURATION									
Size	J7	J8	J9	J10	J11	J12	J13	J14	J15
64KB	2 & 3	2 & 3	open	open	open	open	closed	1 & 2	open
128KB	1 & 2	2 & 3	open	closed	open	closed	closed	2 & 3	1 & 2
256KB	1 & 2	1 & 2	closed	closed	closed	closed	closed	1 & 2	2 & 3

Note: Pins designated should be in the closed position.

DRAM CONFIGURATION		
Size	Bank 0	Bank 1
1MB	(4) 256K x 9	NONE
2MB	(4) 256K x 9	(4) 256K x 9
4MB	(4) 1M x 9	NONE
5MB	(4) 1M x 9	(4) 256K x 9
8MB	(4) 1M x 9	(4) 1M x 9
16MB	(4) 4M x 9	NONE
20MB	(4) 4M x 9	(4) 1M x 9
32MB	(4) 4M x 9	(4) 4M x 9

Continued on next page ...

EFA CORPORATION

ECA 33M50

... continued from previous page

CPU TYPE CONFIGURATION						
CPU	S1 switch 1	S1 switch 2	S1 switch 3	S1 switch 4	S2 switch 1-6	Jumper J23
80486DX2	closed	closed	open	open	open	pins 1 & 2
ODP486SX	closed	closed	open	open	open	pins 2 & 3
80486DX	closed	closed	open	open	open	pins 1 & 2
80487SX-25	closed	closed	open	open	open	pins 2 & 3
80487SX-20	closed	closed	open	closed	open	pins 2 & 3
80486SX-25	open	open	closed	open	open	open
80486SX-20	open	open	closed	closed	open	open
80386DX	closed	closed	open	open	closed	N/A

CPU SPEED CONFIGURATION						
CPU	iOSC SPEED	S3 switch 1	S3 switch 2	S3 switch 3	S3 switch 4	S2 switchs 1-6
80486DX2-50	25MHz	closed	closed	open	closed	open
ODP486SX-66	33MHz	closed	open	closed	closed	open
ODP486SX-50	25MHz	closed	closed	open	closed	open
80486DX-50	50MHz	open	open	open	open	open
80486DX-33	33MHz	closed	open	closed	closed	open
80486DX-25	25MHz	closed	closed	open	closed	open
80487SX-25	25MHz	closed	closed	open	closed	open
80487SX-20	40MHz	open	open	closed	open	open
80486SX-25	25MHz	closed	closed	open	closed	open
80486SX-20	40MHz	open	open	closed	open	open
80386DX-40	80MHz	closed	open	open	open	closed
80386DX-33	66MHz	open	open	open	closed	closed
80386DX-20	20MHz	closed	closed	closed	open	closed
80386DX-16	16MHz	closed	closed	closed	closed	closed