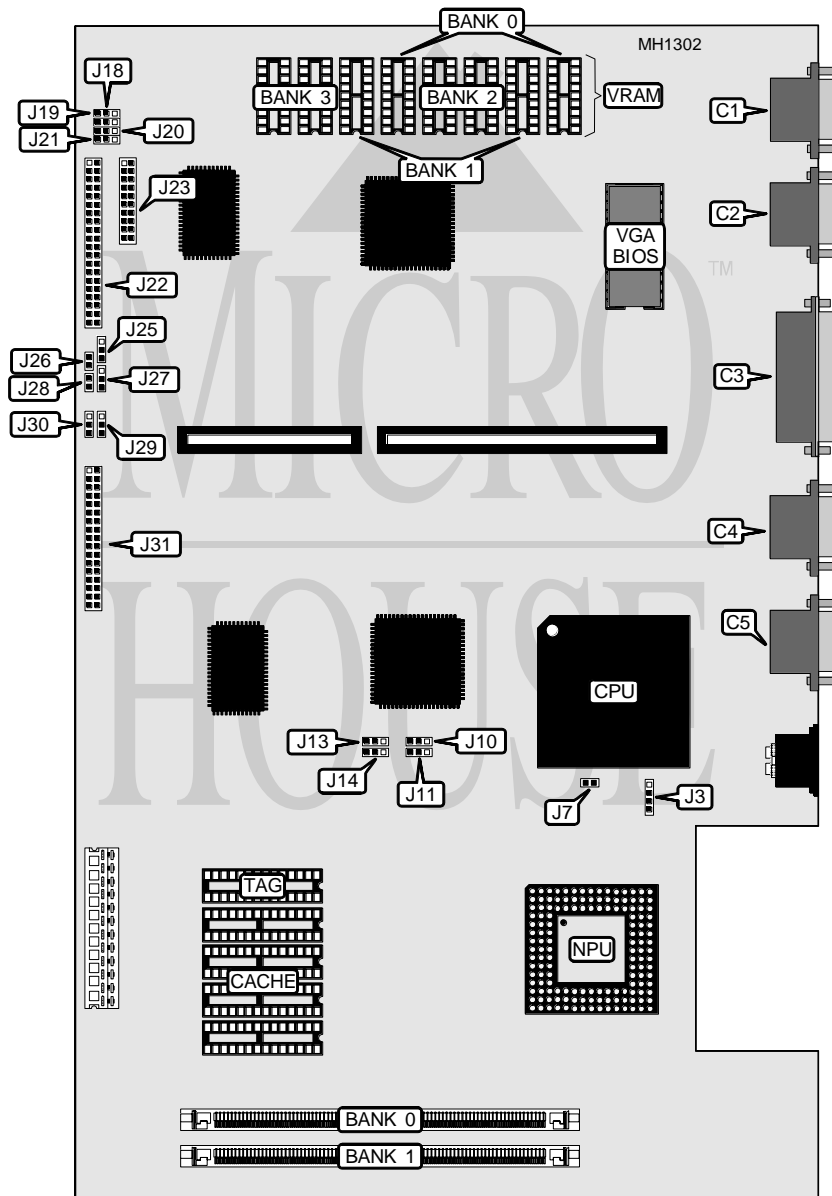


UNITRON COMPUTER, INC. 486SX SYSTEM

Processor	80486SX/80486DX
Processor Speed	25/33MHz
Chip Set	UMC
Max. Onboard DRAM	32MB
SRAM Cache	32/128KB
BIOS	Phoenix
Dimensions	346mm x 218mm
I/O Options	Floppy drive interface, game port, IDE interface, modem interface, parallel port, serial port (2), VGA port
NPU Options	4167 (location unverified)



Continued on next page . . .

UNITRON COMPUTER, INC.

486SX SYSTEM

... continued from previous page

CONNECTIONS			
Purpose	Location	Purpose	Location
Game port	C1	IDE interface	J22
VGA port	C2	Modem interface	J23
Parallel port	C3	Turbo LED	J26
Serial port 2	C4	Power LED	J28
Serial port 1	C5	Floppy drive interface	J31
Fan power	J3		

USER CONFIGURABLE SETTINGS		
Function	Jumper	Position
í Serial port 1 (CN5) enabled	J18	pins 1 & 2 closed
Serial port 1 (CN5) disabled	J18	pins 2 & 3 closed
í Serial port 1 (CN5) select COM1 (I/O address 3F8-3FFh)	J19	pins 1 & 2 closed
Serial port 1 (CN5) select COM3 (I/O address 3E8-3EFh)	J19	pins 2 & 3 closed
í Parallel port (C3) select LPT1 interrupt IRQ7 at 378-37F	J20	pins 1 & 2 closed
Parallel port (C3) select LPT2 interrupt IRQ5 at 278-27F	J20	pins 2 & 3 closed
í Parallel port (CN3) enabled	J21	pins 1 & 2 closed
Parallel port (CN3) disabled	J21	pins 2 & 3 closed
í IDE interface (J22) enabled	J25	pins 1 & 2 closed
IDE interface (J22) disabled	J25	pins 2 & 3 closed
í Floppy drive interface (J31) enabled	J27	pins 1 & 2 closed
Floppy drive interface (J31) disabled	J27	pins 2 & 3 closed
í Serial port 2 (CN4) select COM2 (I/O address 2F8-2FFh)	J29	pins 1 & 2 closed
Serial port 2 (CN4) select COM4 (I/O address 2E8-2EFh)	J29	pins 2 & 3 closed
í Serial port 2 (CN4) enabled	J30	pins 1 & 2 closed
Serial port 2 (CN4) disabled	J30	pins 2 & 3 closed

DRAM CONFIGURATION		
Size	Bank 0	Bank 1
1MB	(1) 256K x 36	NONE
2MB	(1) 256K x 36	(1) 256K x 36
3MB	(1) 512K x 36	(1) 256K x 36
4MB	(1) 1M x 36	NONE
5MB	(1) 256K x 36	(1) 1M x 36
8MB	(1) 1M x 36	(1) 1M x 36
12MB	(1) 2M x 36	(1) 1M x 36
16MB	(1) 2M x 36	(1) 2M x 36
32MB	(1) 4M x 36	(1) 4M x 36

Continued on next page . . .

UNITRON COMPUTER, INC.

486SX SYSTEM

... continued from previous page

CPU TYPE CONFIGURATION		
CPU	JP1	JP2
80486DX	pins 1 & 2 closed	pins 1 & 2 and 3 & 4 closed
80486SX	open	pins 2 & 3 closed

Note: The location of jumpers JP1 and JP2 is unknown.

SRAM JUMPER CONFIGURATION					
Size	J7	J10	J11	J13	J14
32KB	open	pins 1 & 2	pins 1 & 2	pins 1 & 2	pins 1 & 2
128KB	closed	pins 2 & 3	pins 2 & 3	pins 2 & 3	pins 2 & 3

Note: Pins designated should be in the closed position.

SRAM CONFIGURATION			
Size	Cache SRAM	Location	TAG
32KB	(4) 8K x 8	CACHE	(1) 8K x 8
128KB	(4) 32K x 8	CACHE	(1) 32K x 8

Note: This configuration is unverified.

VRAM CONFIGURATION		
Size	VRAM	Location
256KB	(2) 44256	Bank 0
512KB	(4) 44256	Banks 0 & 1
1MB	(8) 44256	Banks 0, 1, 2 and 3