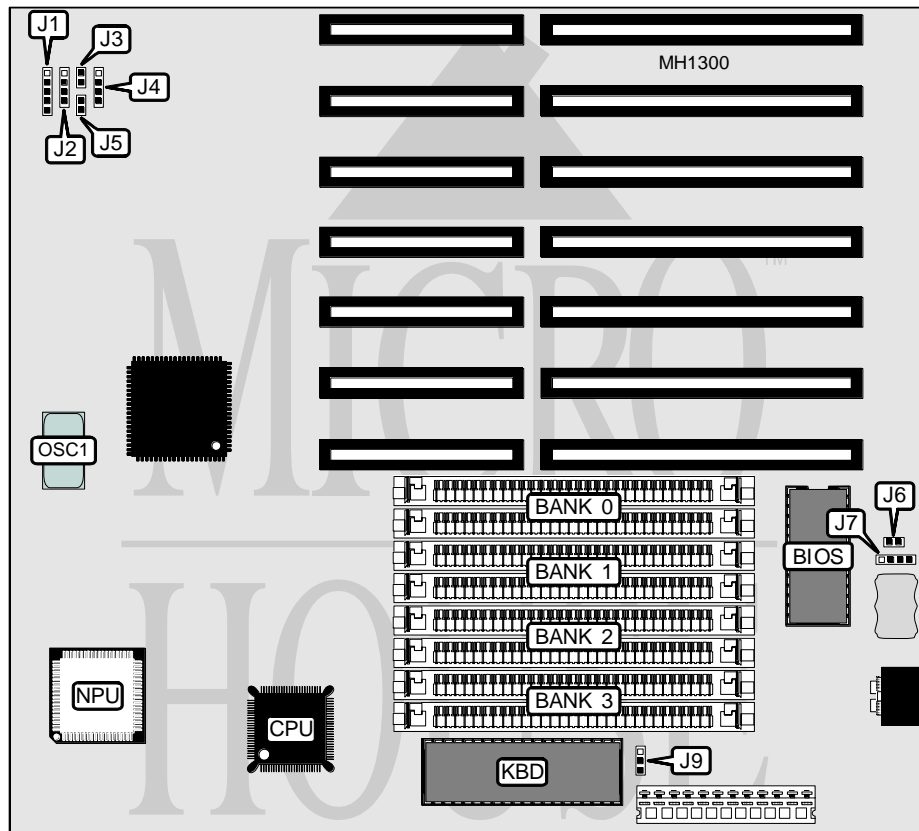


BIOSTAR MICROTECH INTERNATIONAL CORPORATION

MB-1316C(B)-SX2/1320C(B)-SX2/1325C(B)-SX2

Processor 80386SX/CX486SLC
Processor Speed 16/20/25MHz
Chip Set C & T
Max. Onboard DRAM 16MB
SRAM Cache None
BIOS AMI
Dimensions 236mm x 218mm
I/O Options None
NPU Options 80387SX



CONNECTIONS			
Purpose	Location	Purpose	Location
Power LED & keylock	J1	Reset switch	J4
Speaker	J2	Turbo LED	J5
Turbo switch	J3	External battery	J7

Continued on next page . . .

BIOSTAR MICROTECH INTERNATIONAL CORPORATION

MB-1316C(B)-SX2/1320C(B)-SX2/1325C(B)-SX2

... continued from previous page

USER CONFIGURABLE SETTINGS

Function	Jumper	Position
í Battery select internal	J6	closed
Battery select external	J6	open
í Monitor type select color	J9	pins 2 & 3 closed
Monitor type select monochrome	J9	pins 1 & 2 closed

DRAM CONFIGURATION

Size	Bank 0	Bank 1	Bank 2	Bank 3
512KB	(2) 256K x 9	NONE	NONE	NONE
1MB	(2) 256K x 9	(2) 256K x 9	NONE	NONE
1.5MB	(2) 256K x 9	(2) 256K x 9	(2) 256K x 9	NONE
2MB	(2) 256K x 9	(2) 256K x 9	(2) 256K x 9	(2) 256K x 9
2MB	(2) 1M x 9	NONE	NONE	NONE
2.5MB	(2) 256K x 9	(2) 1M x 9	NONE	NONE
3MB	(2) 256K x 9	(2) 256K x 9	(2) 1M x 9	NONE
4MB	(2) 1M x 9	(2) 1M x 9	NONE	NONE
4.5MB	(2) 256K x 9	(2) 1M x 9	(2) 1M x 9	NONE
5MB	(2) 256K x 9	(2) 256K x 9	(2) 1M x 9	(2) 1M x 9
6MB	(2) 1M x 9	(2) 1M x 9	(2) 1M x 9	NONE
6.5MB	(2) 256K x 9	(2) 1M x 9	(2) 1M x 9	(2) 1M x 9
8MB	(2) 1M x 9	(2) 1M x 9	(2) 1M x 9	(2) 1M x 9
9MB	(2) 256K x 9	(2) 256K x 9	(2) 4M x 9	NONE
10MB	(2) 1M x 9	(2) 4M x 9	NONE	NONE
16MB	(2) 4M x 9	(2) 4M x 9	NONE	NONE