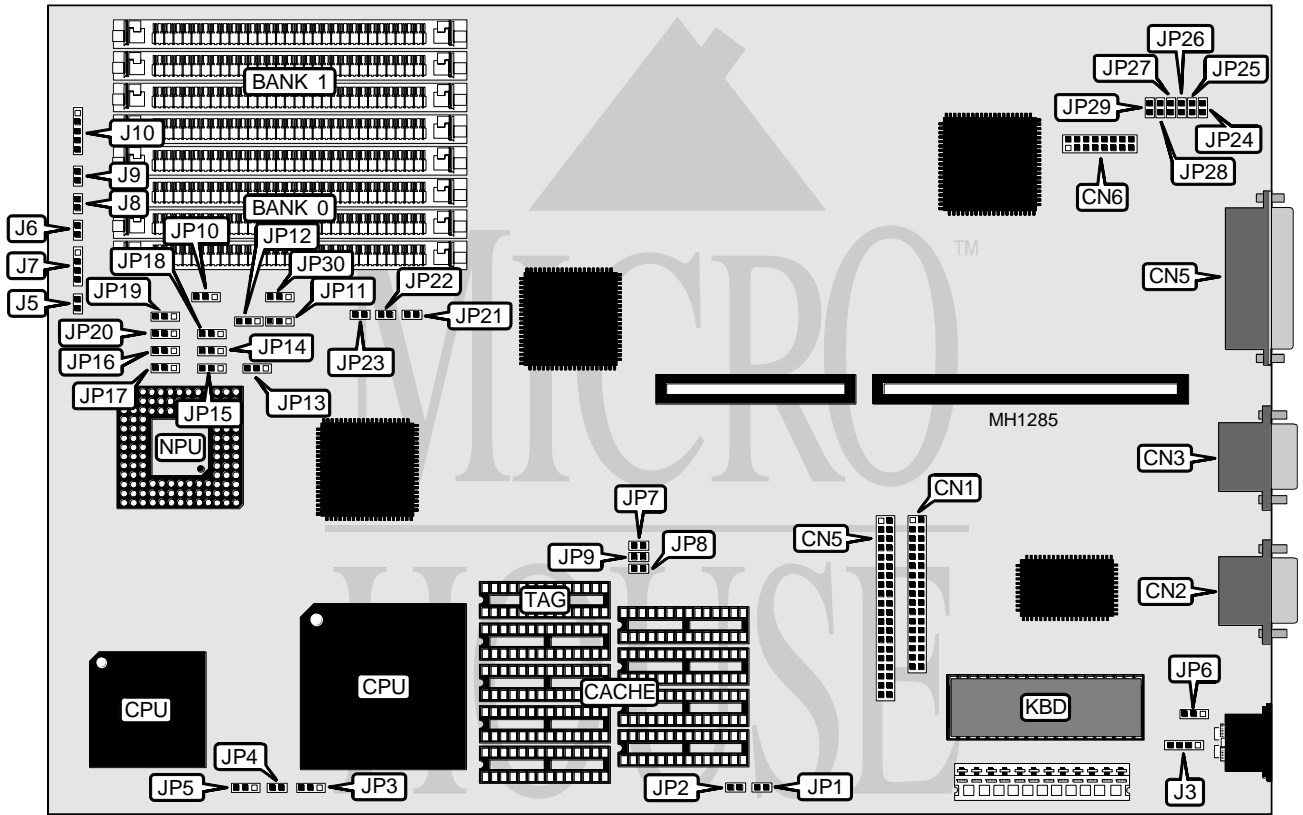


CAF TECHNOLOGY, INC.

C747 (VER. 002)

Processor	80386DX/CX486DLC/80486SX/80487SX/80486DX/80486DX2
Processor Speed	20/25/33/40/50(internal)/50/66(internal)MHz
Chip Set	EFAR
Max. Onboard DRAM	32MB
SRAM Cache	64/256KB
BIOS	AMI
Dimensions	331mm x 219mm
I/O Options	Floppy drive interface, game port, IDE interface, parallel port, serial port (2)
NPU Options	80387/CX83D87/3167



CONNECTIONS			
Purpose	Location	Purpose	Location
External battery	J3	Floppy drive interface	CN1
IDE interface LED	J5	Serial port 1	CN2
Reset switch	J6	Serial port 2	CN3
Speaker	J7	IDE interface	CN4
Turbo switch	J8	Parallel port	CN5
Turbo LED	J9	Game port	CN6
Power LED & keylock	J10		

Continued on next page . . .

CAF TECHNOLOGY, INC.
C747 (VER. 002)

... continued from previous page

USER CONFIGURABLE SETTINGS		
Function	Jumper	Position
í Monitor type select color	JP1	closed
Monitor type select monochrome	JP1	open
í CMOS memory normal operation (internal battery)	JP6	pins 2 & 3 closed
CMOS memory normal operation (external battery)	JP6	open
CMOS memory clear	JP6	pins 1 & 2 closed

SRAM JUMPER CONFIGURATION				
Size	JP2	JP7	JP8	JP9
64KB	open	open	open	open
256KB	closed	closed	closed	open

SRAM CONFIGURATION		
Size	Bank 0	TAG
64KB	(8) 8K x 8	(1) 8K x 8
256KB	(8) 32K x 8	(1) 32K x 8

CPU TYPE CONFIGURATION			
CPU	JP3	JP4	JP5
80486DX2 ¹	pins 1 & 2 closed	closed	pins 2 & 3 closed
80486DX ¹	pins 1 & 2 closed	closed	pins 2 & 3 closed
80487SX ¹	pins 1 & 2 closed	closed	pins 1 & 2 closed
CX486DLC ²	N/A	N/A	N/A
80486SX ¹	pins 2 & 3 closed	open	open
80368DX ²	N/A	N/A	N/A

Note¹: Jumpers JP10, JP11, JP12, JP13, JP14, JP15, JP16, JP17, JP18, JP19, JP20, pins 2 & 3 closed.

Note²: Jumpers JP10, JP11, JP12, JP13, JP14, JP15, JP16, JP17, JP18, JP19, JP20, pins 1 & 2 closed.

DRAM CONFIGURATION		
Size	Bank 0	Bank 1
1MB	(4) 256K x 9	NONE
2MB	(4) 256K x 9	(4) 256K x 9
4MB	(4) 1M x 9	NONE
5MB	(4) 1M x 9	(4) 256K x 9
8MB	(4) 1M x 9	(4) 1M x 9
16MB	(4) 4M x 9	NONE
20MB	(4) 4M x 9	(4) 1M x 9
20MB	(4) 1M x 9	(4) 4M x 9
32MB	(4) 4M x 9	(4) 4M x 9

Continued on next page ...

CAF TECHNOLOGY, INC.
C747 (VER. 002)

... continued from previous page

CPU CLOCK CONFIGURATION				
CPU	JP21	JP22	JP23	JP30
80486-50	open	open	open	pins 2 & 3 closed
80486-40	open	open	closed	pins 2 & 3 closed
80486-33 80486DX2-66	closed	open	open	pins 2 & 3 closed
80486-25 80486DX2-50	closed	open	closed	pins 2 & 3 closed
80386-40 CX486DLC-40	open	open	closed	pins 1 & 2 closed
80386-33 CX486DLC-33	closed	open	open	pins 1 & 2 closed
80386-25	closed	open	closed	pins 1 & 2 closed
80386-20 80486-20	open	closed	open	pins 1 & 2 closed

I/O CONTROLLER CONFIGURATION			
Device	Jumper	Enabled	Disabled
Game port (CN6)	JP24	open	closed
IDE interface (CN4)	JP25	open	closed
Parallel port (CN5)	JP26	open	closed
Floppy drive interface (CN1)	JP27	open	closed
COM1 (CN2)	JP28	open	closed
COM2 (CN3)	JP29	open	closed