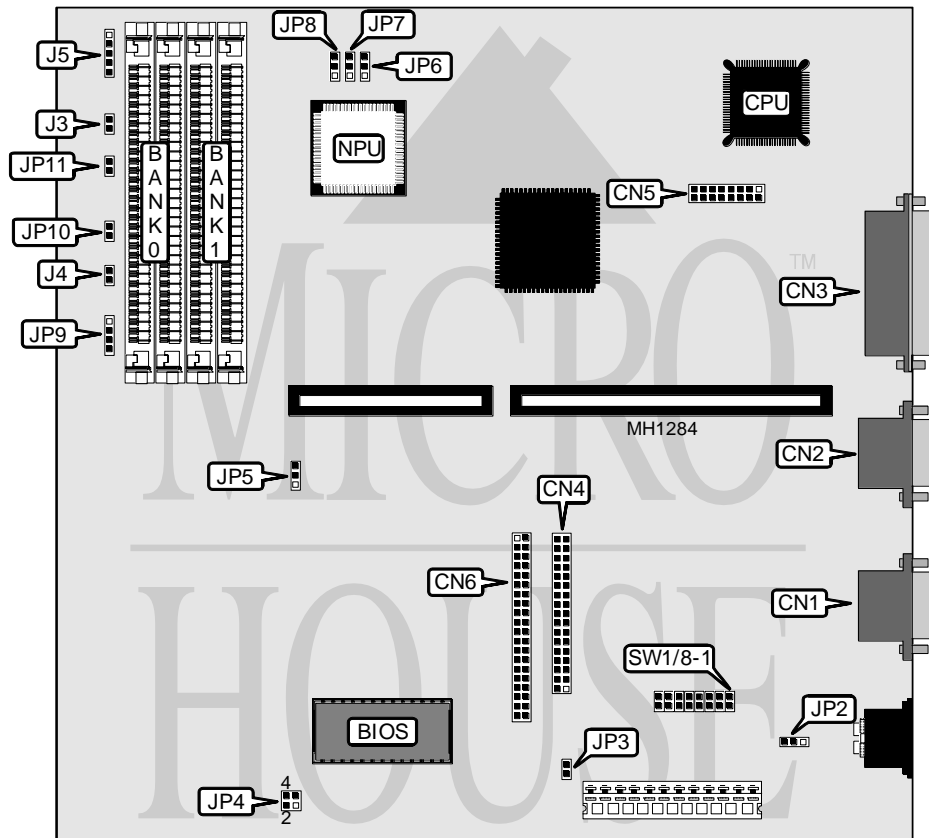


CAF TECHNOLOGY, INC.

N 3 4 2 (V E R . 1 . 0)

Processor	80368SX
Processor Speed	25/33MHz
Chip Set	VLSI SCAMP
Max. Onboard DRAM	16MB
SRAM Cache	None
BIOS	AMI
Dimensions	240mm x 220mm
I/O Options	Floppy drive interface, game port, IDE interface, parallel port, serial port (2)
NPU Options	80387SX



CONNECTIONS			
Purpose	Location	Purpose	Location
IDE interface LED	J3	Serial port 1	CN1
Reset switch	J4	Serial port 2	CN2
Power LED & keylock	J5	Parallel port	CN3
Speaker	JP9 pins 3 & 4	Floppy drive interface	CN4
Turbo switch	JP10	Game port	CN5
Turbo LED	JP11	IDE interface	CN6

Continued on next page . . .

CAF TECHNOLOGY, INC.

N 3 4 2 (V E R . 1 . 0)

... continued from previous page

USER CONFIGURABLE SETTINGS		
Function	Jumper/Switch	Position
í Battery select internal (3.6VDC)	JP2	pins 1 & 2 closed
Battery select external (6.0VDC)	JP2	pins 2 & 3 closed
í SYSCLK normal operation	JP3	open
SYSCLK select 12MHz	JP3	closed
í CMOS memory normal operation	JP4	pins 1 & 2 closed
CMOS memory clear	JP4	pins 3 & 4 closed
í Turbo mode controlled by JP10	JP5	pins 2 & 3 closed
Turbo mode selectable at keyboard	JP5	pins 1 & 2 closed
í Speaker select internal	JP9	pins 1 & 2 closed
Speaker select external	JP9	connected
í Monitor type select monochrome	SW1/Switch 8	open
Monitor type select color	SW1/Switch 8	closed
í Factory configured - do not alter	SW1/Switch 3	unknown

CPU CONFIGURATION				
CPU	Clock Speed	JP6	JP7	JP8
80386SX/33	66MHz	pins 1 & 2 closed	pins 2 & 3 closed	pins 1 & 2 closed
80386SX/25	50MHz	pins 2 & 3 closed	pins 2 & 3 closed	pins 1 & 2 closed
80386SX/20	40MHz	pins 1 & 2 closed	pins 1 & 2 closed	pins 2 & 3 closed

DRAM CONFIGURATION		
Size	Bank 0	Bank 1
512KB	(2) 256K x 9	NONE
1MB	(2) 256K x 9	(2) 256K x 9
2MB	(2) 1M x 9	NONE
4MB	(2) 1M x 9	(2) 1M x 9
8MB	(2) 4M x 9	NONE
16MB	(2) 4M x 9	(2) 4M x 9

I/O CONTROLLER CONFIGURATION			
Device	SW1	Enabled	Disabled
COM1 (CN1)	switch 1	open	closed
COM2 (CN2)	switch 2	open	closed
Floppy drive interface (CN4)	switch 4	open	closed
Parallel port (CN3)	switch 5	open	closed
IDE interface (CN6)	switch 6	open	closed
Game port (CN5)	switch 7	open	closed