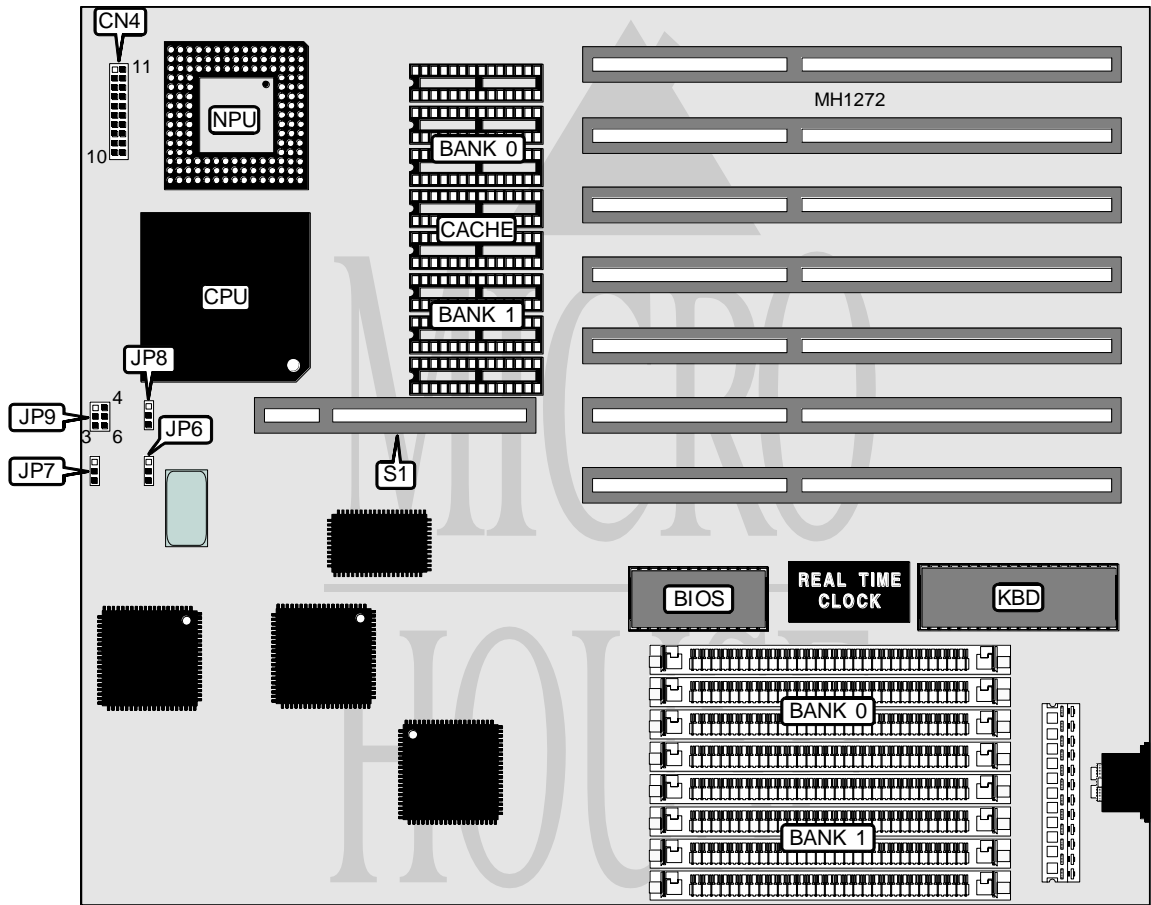


ACER, INC. EISA 486LXE (MODEL L433S)

Processor	80486SX/80487SX/80486DX/ODP486SX/80486DX2
Processor Speed	25/33/50(internal)/50/66(internal)MHz
Chip Set	SIS
Max. Onboard DRAM	128MB
SRAM Cache	128/256KB
BIOS	Acer
Dimensions	220mm x 260mm
I/O Options	32-bit VESA card slot
NPU Options	4167



CONNECTIONS			
Purpose	Location	Purpose	Location
Power LED & keylock	CN4/1 - 5	Turbo switch	CN4/15 - 17
Speaker	CN4/7 - 10	Reset switch	CN4/19 & 20
Turbo LED	CN4/12 & 13	32-bit VESA card	S1

Continued next page

ACER, INC.
EISA 486LXE (MODEL L433S)

... continued from previous page

USER CONFIGURABLE SETTINGS		
Function	Jumper	Position
VESA bus wait states select 0	JP8	pins 2 & 3 closed
VESA bus wait states select 1	JP8	pins 1 & 2 closed

DRAM CONFIGURATION		
Size	Bank 0	Bank 1
1MB	(4) 256K x 9	NONE
2MB	(4) 256K x 9	(4) 256K x 9
4MB	(4) 1M x 9	NONE
5MB	(4) 256K x 9	(4) 1M x 9
8MB	(4) 1M x 9	(4) 1M x 9
16MB	(4) 4M x 9	NONE
20MB	(4) 1M x 9	(4) 4M x 9
32MB	(4) 4M x 9	(4) 4M x 9
64MB	(4) 16M x 9	NONE
128MB	(4) 16M x 9	(4) 16M x 9

CPU SPEED CONFIGURATION FOR CH9001 SYSTEM CLOCK CHIP	
CPU Speed	JP9
33/66(internal)MHz	pins 1 & 4 closed
25/50(internal)MHz	pins 3 & 6 closed
40MHz	pins 1 & 2 and 4 & 5 closed
50MHz	pins 2 & 5 closed

SRAM CONFIGURATION			
Size	Cache SRAM	Location	Jumpers JP6 & JP7
128KB	(4) 32K x 8	Bank 0	pins 2 & 3 closed
256KB	(8) 32K x 8	Banks 0 & 1	pins 1 & 2 closed