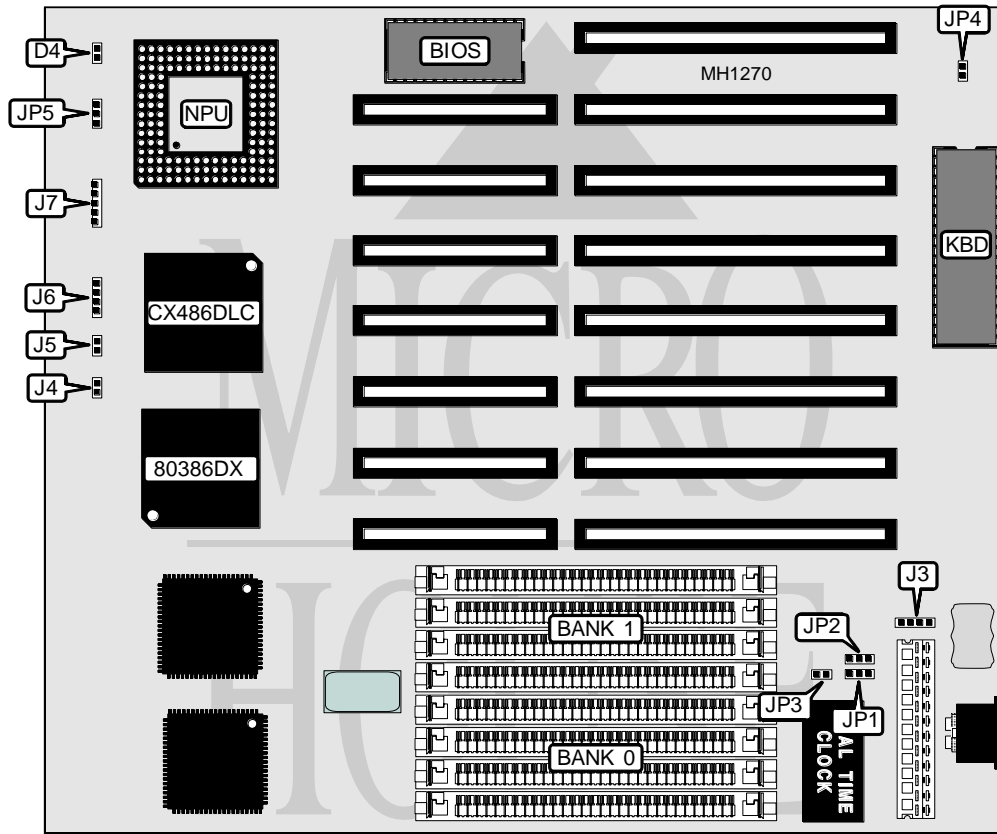


**POLOTEC, INC.**  
**MBA - 503B**

<b>Processor</b>	80386DX/CX486DLC
<b>Processor Speed</b>	25/33/40MHz
<b>Chip Set</b>	Micronics
<b>Max. Onboard DRAM</b>	32MB
<b>SRAM Cache</b>	None
<b>BIOS</b>	AMI
<b>Dimensions</b>	220mm x 220mm
<b>I/O Options</b>	None
<b>NPU Options</b>	80387/3167



CONNECTIONS			
Purpose	Location	Purpose	Location
Turbo LED	D4	Reset switch	J5
External battery	J3	Speaker	J6
Parallel port	J4	Power LED & keylock	J7

*Continued on next page . . .*

# POLOTEC, INC.

## MBA - 503B

... continued from previous page

USER CONFIGURABLE SETTINGS		
Function	Jumper	Position
í RTC type select 146818	JP1 JP3	pins 2 & 3 closed closed
RTC type select DS1287	JP1 JP3	pins 1 & 2 closed open
í CMOS memory normal operation	JP2	pins 1 & 2 closed
CMOS memory clear	JP2	pins 2 & 3 closed
í Monitor type select color	JP4	closed
Monitor type select monochrome	JP4	open
NPU select 80387	JP5	pins 1 & 2 closed
NPU select 3167 or none	JP5	pins 2 & 3 closed

DRAM CONFIGURATION		
Size	Bank 0	Bank 1
1MB	(4) 256K x 9	NONE
2MB	(4) 256K x 9	(4) 256K x 9
4MB	(4) 1M x 9	NONE
5MB	(4) 1M x 9	(4) 256K x 9
8MB	(4) 1M x 9	(4) 1M x 9
16MB	(4) 4M x 9	NONE
20MB	(4) 1M x 9	(4) 4M x 9
32MB	(4) 4M x 9	(4) 4M x 9