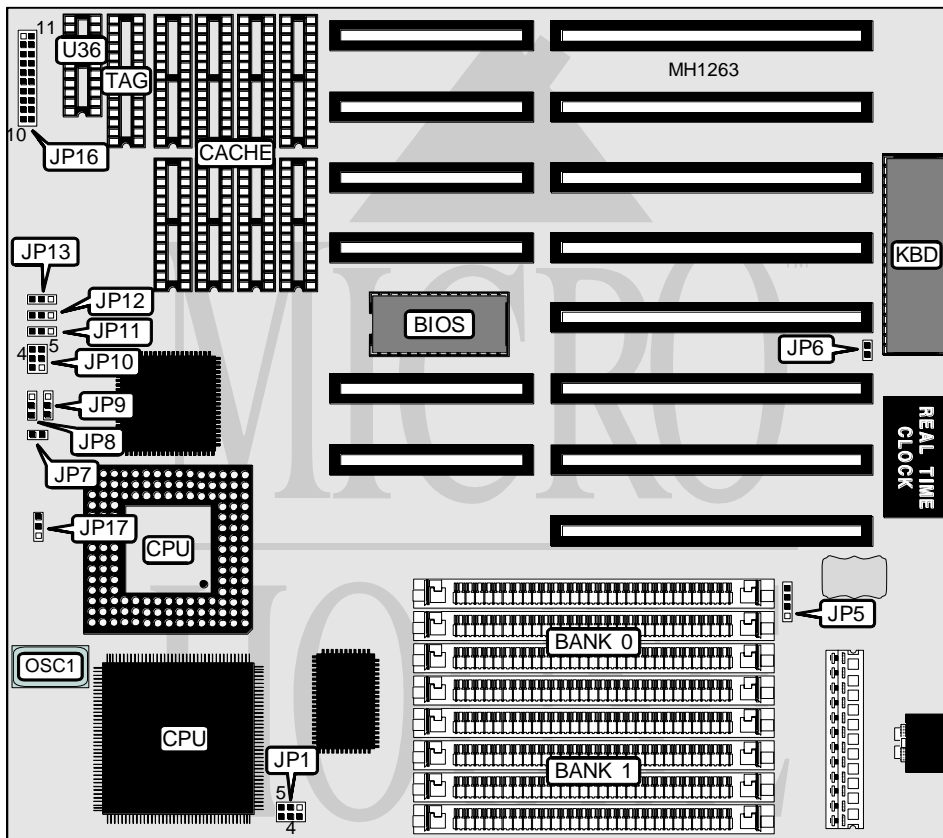


ACER, INC.

ISA486GX1 MODEL I433A

Processor	80486SX/80487SX/80486DX/ODP486SX/80486DX2
Processor Speed	20/25/33/50(internal)/66(internal)
Chip Set	ALI
Max. Onboard DRAM	32MB
SRAM Cache	64/256KB
BIOS	Acer
Dimensions	220mm x 240mm
I/O Options	None
NPU Options	None



CONNECTIONS			
Purpose	Location	Purpose	Location
External battery	JP5	Turbo LED	JP16/12 & 13
Power LED & keylock	JP16/1 - 5	Turbo switch	JP16/15 - 17
Speaker	JP16/7 - 10	Reset switch	JP16/19 & 20

SRAM CONFIGURATION						
Size	Cache	TAG	(U36)	JP10	JP11	JP12
64KB	(8) 8K x 8	(1) 8K x 8	(1) 16K x 4	open	pins 2 & 3	pins 1 & 2
64KB	(8) 8K x 8	(1) 8K x 8	NONE	open	pins 1 & 2	pins 2 & 3
256KB	(8) 32K x 8	(1) 32K x 8	(1) 16K x 4	closed	pins 2 & 3	pins 1 & 2
256KB	(8) 32K x 8	(1) 32K x 8	NONE	closed	pins 1 & 2	pins 2 & 3

Note: Pins designated should be in the closed position.
 JP10 is closed by shorting pins 1 & 2, 3 & 4, and 5 & 6.

Continued next page

ACER, INC.

ISA486GX1 MODEL I433A

... continued from previous page

USER CONFIGURABLE SETTINGS		
Function	Jumper	Position
í CMOS memory normal operation	JP6	open
CMOS memory clear	JP6	closed
System automatically detects CPU type installed	JP7	closed
System detects only 486SX/DX CPUs	JP7	open
í Factory configured - do not alter	JP8	pins 1 & 2 closed
í Factory configured - do not alter	JP13	pins 1 & 2 closed
í Factory configured - do not alter	JP17	open

DRAM CONFIGURATION		
Size	Bank 0	Bank 1
1MB	(4) 256K x 9	NONE
2MB	(4) 256K x 9	(4) 256K x 9
2MB	(4) 512K x 9	NONE
4MB	(4) 512K x 9	(4) 512K x 9
4MB	(4) 1M x 9	NONE
5MB	(4) 1M x 9	(4) 256K x 9
6MB	(4) 512K x 9	(4) 1M x 9
8MB	(4) 1M x 9	(4) 1M x 9
16MB	(4) 4M x 9	NONE
17MB	(4) 256K x 9	(4) 4M x 9
18MB	(4) 512K x 9	(4) 4M x 9
20MB	(4) 1M x 9	(4) 4M x 9
32MB	(4) 4M x 9	(4) 4M x 9

CPU SPEED CONFIGURATION FOR CH9001 SYSTEM CLOCK CHIP		
CPU Speed	JP1	JP9
20MHz	pins 1 & 2 closed	pins 2 & 3 closed
25MHz	open	pins 2 & 3 closed
33MHz	pins 3 & 4 closed	pins 2 & 3 closed
40MHz	pins 1 & 2 and 5 & 6 closed	pins 1 & 2 closed
50MHz	pins 5 & 6 closed	pins 1 & 2 closed

CPU SPEED CONFIGURATION FOR IMISC425 SYSTEM CLOCK CHIP		
CPU Speed	JP1	JP9
20MHz	pins 1 & 2 and 3 & 4 closed	pins 2 & 3 closed
25MHz	pins 3 & 4 closed	pins 2 & 3 closed
33MHz	pins 1 & 2 closed	pins 2 & 3 closed
40MHz	pins 1 & 2, 3 & 4, and 5 & 6 closed	pins 1 & 2 closed
50MHz	pins 5 & 6 closed	pins 1 & 2 closed