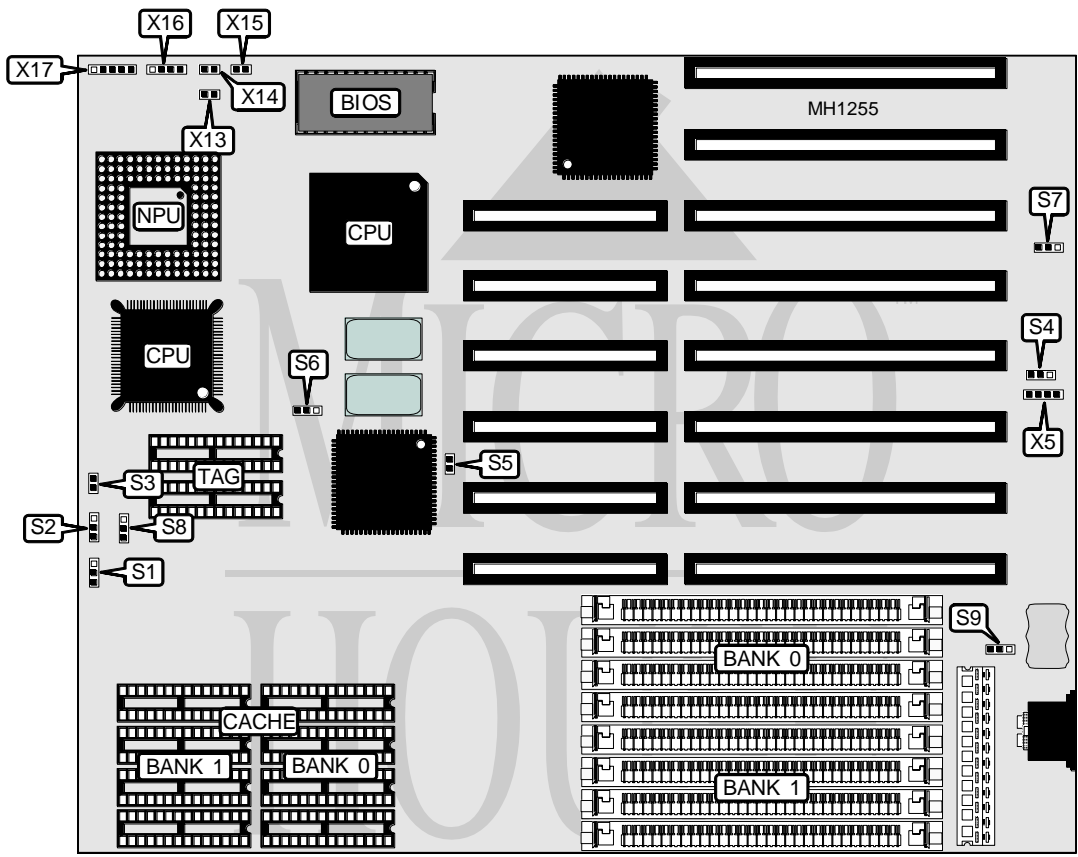


ARNOS INSTRUMENTS & COMPUTER SYSTEMS, INC.

A 386 - 25 / 33 / 40 C

Processor	80386DX
Processor Speed	25/33/40MHz
Chip Set	AIC
Max. Onboard DRAM	64MB
Cache	64/128/256KB
BIOS	AMI/Phoenix
Dimensions	259mm x 219mm
I/O Options	None
NPU Options	3167



CONNECTIONS			
Purpose	Location	Purpose	Location
External battery	X5	Turbo switch	X15
Reset switch	X13	Speaker	X16
Turbo LED	X14	Power LED & keylock	X17

Continued on next page . . .

ARNOS INSTRUMENTS & COMPUTER SYSTEMS, INC.

A386-25/33/40C

... continued from previous page

USER CONFIGURABLE SETTINGS		
Function	Jumper	Position
í Factory configured - do not alter	S3	open
í Battery type select 5VDC or less	S4	pins 1 & 2 Closed
Battery type select greater than 5VDC	S4	pins 2 & 3 Closed
í Monitor type select color	S5	closed
Monitor type select monochrome	S5	open
í Factory configured - do not alter	S6	pins 2 & 3 Closed
í Battery select internal	S7	pins 1 & 2 Closed
Battery select external	S7	pins 2 & 3 Closed
í Power good signal detect from board	S9	pins 1 & 2 Closed
Power good signal detect from power supply	S9	pins 2 & 3 Closed

CPU TYPE CONFIGURATION		
CPU Type	S6	S9
80486DX2	pins 1 & 2 closed	pins 1 & 2 and 3 & 4 closed
80486DX	pins 1 & 2 closed	pins 1 & 2 and 3 & 4 closed
80487SX	pins 2 & 3 closed	pins 1 & 2 and 3 & 4 closed
80486SX	open	pins 2 & 3 closed

DRAM CONFIGURATION		
Size	Bank 0	Bank 1
1MB	(4) 256K x 9	NONE
2MB	(4) 256K x 9	(4) 256K x 9
4MB	(4) 1M x 9	NONE
8MB	(4) 1M x 9	(4) 1M x 9
16MB	(4) 4M x 9	NONE
32MB	(4) 4M x 9	(4) 4M x 9
64MB	(4) 16M x 9	NONE

CACHE JUMPER CONFIGURATION			
Size	S1	S2	S8
64KB	pins 1 & 2 closed	pins 1 & 2 closed	pins 1 & 2 closed
128KB	pins 1 & 2 closed	pins 1 & 2 closed	pins 2 & 3 closed
256KB	pins 2 & 3 closed	pins 2 & 3 closed	pins 2 & 3 closed

CACHE CONFIGURATION			
Size	Cache	Location	TAG
64KB	(8) 8K x 8	Banks 0 & 1	(2) 8K x 8
128KB	(4) 32K x 8	Bank 0	(2) 8K x 8
256KB	(8) 32K x 8	Banks 0 & 1	(2) 32K x 8