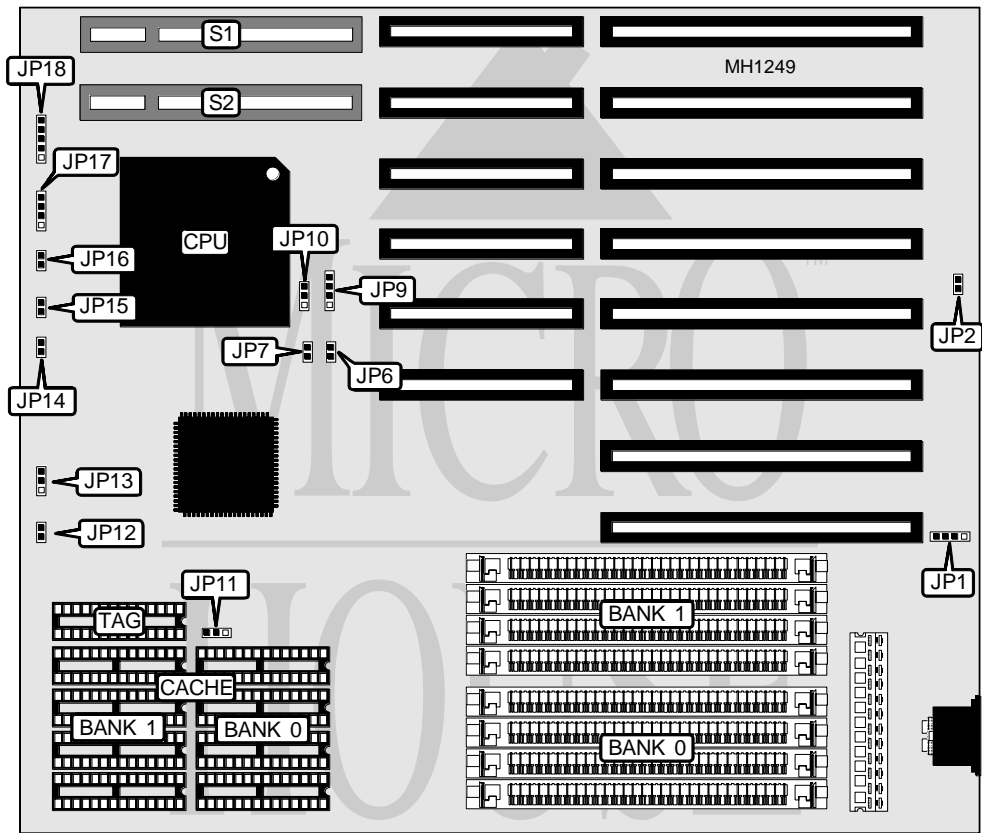


FREE COMPUTER TECHNOLOGY, INC.
80486VISA

Processor	80486SX/80487SX/80486DX/80486DX2
Processor Speed	20/25/33/50(internal)/50/66(internal)MHz
Chip Set	SIS
Max. Onboard DRAM	32MB
SRAM Cache	64/128/256KB
BIOS	AMI
Dimensions	254mm x 218mm
I/O Options	32-bit VESA local bus (2)
NPU Options	None



CONNECTIONS			
Purpose	Location	Purpose	Location
External battery	JP1	Speaker	JP17
Reset switch	JP14	Power LED & keylock	JP18
Turbo switch	JP15	32-bit VESA local bus slots (2)	S1 & S2
Turbo LED	JP16		

USER CONFIGURABLE SETTINGS		
Function	Jumper	Position
í Monitor type select monochrome	JP2	Closed
Monitor type select color	JP2	Open

Continued on next page . . .

FREE COMPUTER TECHNOLOGY, INC.

80486VISA

... continued from previous page

DRAM CONFIGURATION		
Size	Bank 0	Bank 1
1MB	(4) 256K x 9	NONE
2MB	(4) 256K x 9	(4) 256K x 9
4MB	(4) 1M x 9	NONE
5MB	(4) 1M x 9	NONE
8MB	(4) 1M x 9	(4) 1M x 9
16MB	(4) 4M x 9	NONE
17MB	(4) 4M x 9	(4) 256K x 9
20MB	(4) 1M x 9	(4) 4M x 9
32MB	(4) 4M x 9	(4) 4M x 9

SRAM CONFIGURATION			
Size	Cache	Location	TAG
64KB	(8) 8K x 8	Banks 0 & 1	(1) 8K x 8
128KB	(4) 32K x 8	Bank 0	(1) 8K x 8
256KB	(8) 32K x 8	Banks 0 & 1	(1) 32K x 8

SRAM JUMPER CONFIGURATION		
Size	JP12	JP13
64KB	Open	Open
128KB	Closed	pins 1 & 2 closed
256KB	Closed	pins 2 & 3 closed

CPU JUMPER CONFIGURATION		
CPU	JP9	JP10
80486DX2	pins 1 & 2 and 3 & 4 closed	pins 1 & 2 closed
80486DX	pins 1 & 2 and 3 & 4 closed	pins 1 & 2 closed
ODP486SX	pins 1 & 2 and 3 & 4 closed	pins 2 & 3 closed
80487SX	pins 1 & 2 and 3 & 4 closed	pins 2 & 3 closed
80486SX	pins 2 & 3 closed	Open

CPU SPEED JUMPER CONFIGURATION			
Speed	JP6	JP7	JP11
20MHz	Closed	Closed	pins 1 & 2 closed
25/50i MHz	Open	Closed	pins 1 & 2 closed
33/66i MHz	Closed	Open	pins 1 & 2 closed
40MHz	Closed	Closed	pins 2 & 3 closed
50MHz	Open	Closed	pins 2 & 3 closed