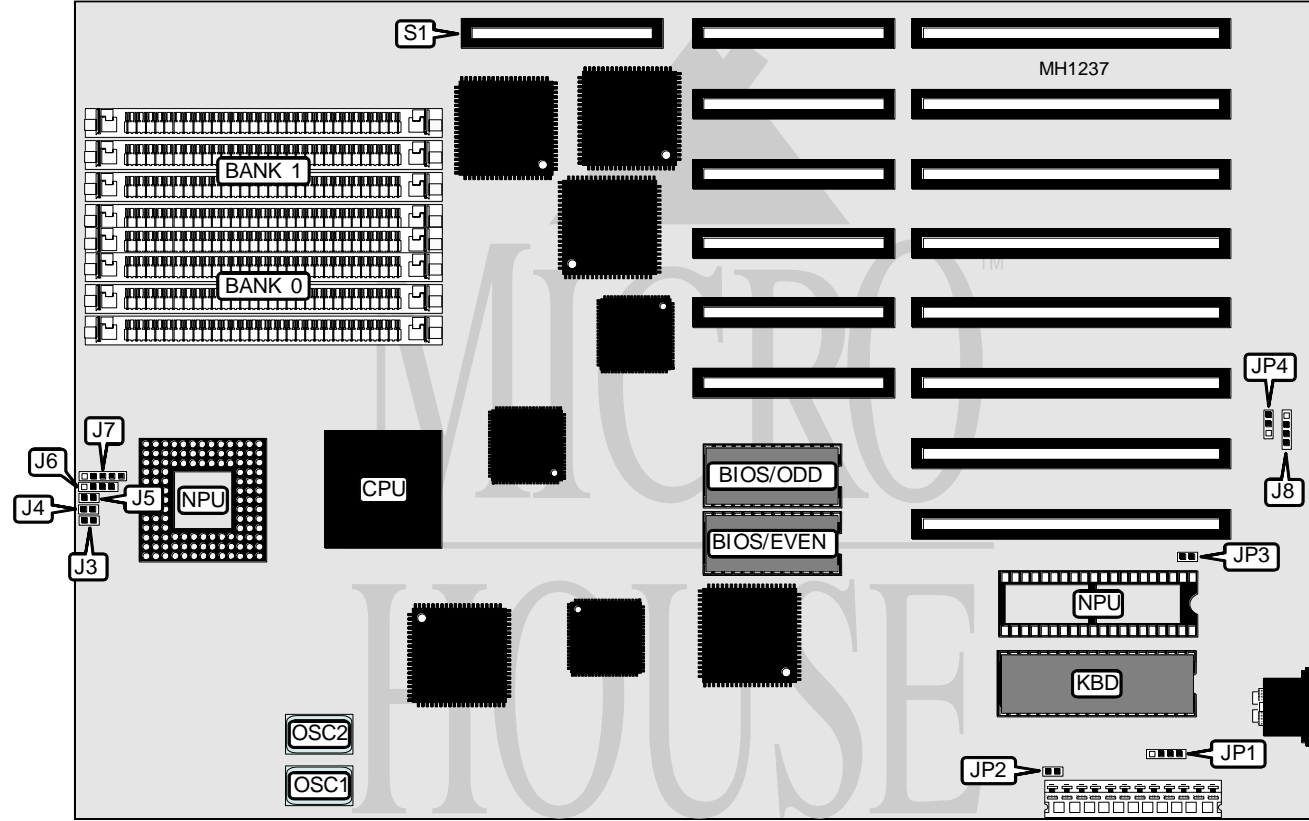


CHICONY, INC.  
CH-386-20B

|                   |                                  |
|-------------------|----------------------------------|
| Processor         | 80386DX                          |
| Processor Speed   | 20MHz                            |
| Chip Set          | C & T                            |
| Max. Onboard DRAM | 8MB                              |
| SRAM Cache        | None                             |
| BIOS              | AMI/Award/Phoenix                |
| Dimensions        | 218.4mm x 330.2mm                |
| I/O Options       | 32-bit external memory card slot |
| NPU Options       | 80287/80387/3167                 |



| CONNECTIONS  |          |                             |          |
|--------------|----------|-----------------------------|----------|
| Purpose      | Location | Purpose                     | Location |
| Reset switch | J3       | Power LED & keylock         | J7       |
| Turbo LED    | J4       | External battery            | J8       |
| Turbo switch | J5       | 32-bit external memory card | S1       |
| Speaker      | J6       |                             |          |

Continued on next page . . .

# CHICONY, INC.

## CH-386-20B

... continued from previous page

| USER CONFIGURABLE SETTINGS           |        |                   |
|--------------------------------------|--------|-------------------|
| Function                             | Jumper | Position          |
| í Factory configured - do not alter  | JP1    | unknown           |
| í Monitor type select monochrome     | JP2    | open              |
| Monitor type select color            | JP2    | closed            |
| í NPU type select 80287/3167 or none | JP3    | closed            |
| NPU type select 80387                | JP3    | open              |
| í CMOS memory normal operation       | JP4    | pins 1 & 2 closed |
| í CMOS memory clear                  | JP4    | pins 2 & 3 closed |

| DRAM CONFIGURATION |              |              |
|--------------------|--------------|--------------|
| Size               | Bank 0       | Bank 1       |
| 1MB                | (4) 256K x 9 | NONE         |
| 2MB                | (4) 256K x 9 | (4) 256K x 9 |
| 4MB                | (4) 1M x 9   | NONE         |
| 8MB                | (4) 1M x 9   | (4) 1M x 9   |