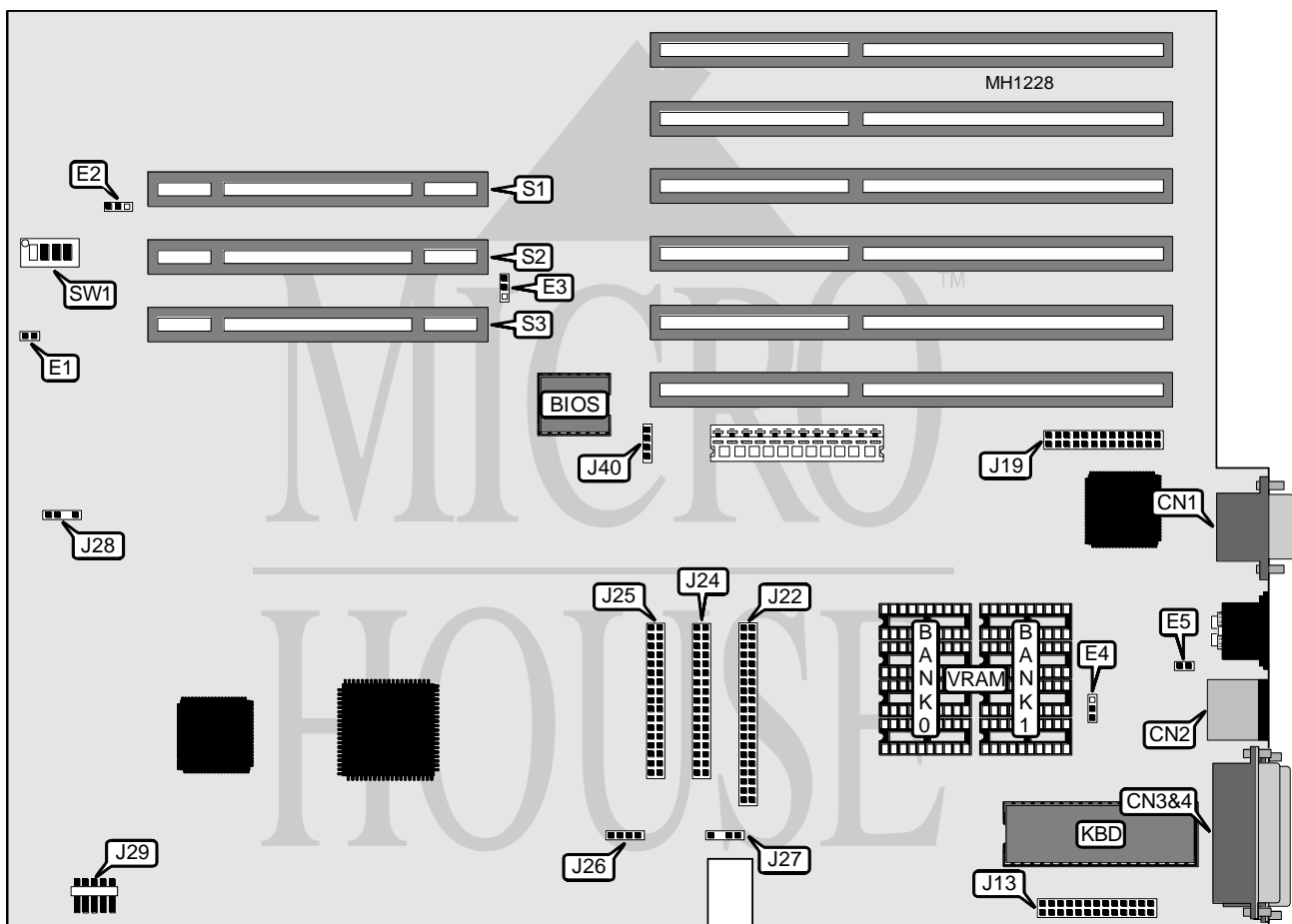


# AST RESEARCH, INC.

## POWER PREMIUM 386/25 (MODEL 202441-001)

<b>Processor</b>	80386DX (on external CPU/Memory module)
<b>Processor Speed</b>	25MHz
<b>Chip Set</b>	AST
<b>Max. Onboard DRAM</b>	None (16MB on external CPU/Memory module)
<b>SRAM Cache</b>	None (16KB on external CPU/Memory module)
<b>BIOS</b>	AST
<b>Dimensions</b>	344mm x 250mm
<b>I/O Options</b>	32-bit external CPU/Memory module slot, 32-bit external Memory module slot (2) bus mouse port, floppy drive interface, IDE interface, parallel port, serial port (2), SVGA port
<b>NPU Options</b>	80387/3167 (on external CPU/Memory module)



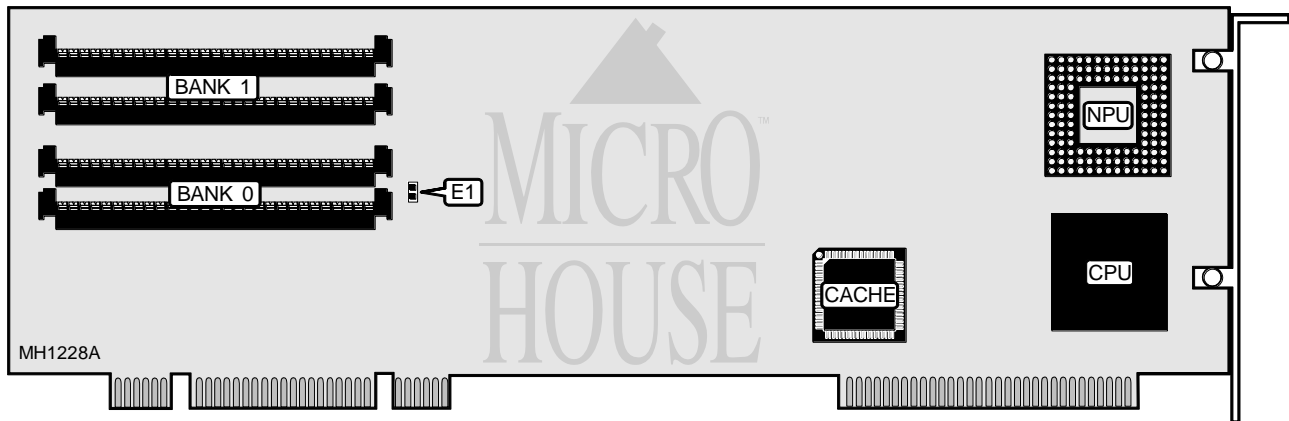
Continued on next page . . .

# AST RESEARCH, INC. POWER PREMIUM 386/25 (MODEL 202441-001)

... continued from previous page

CONNECTIONS			
Purpose	Location	Purpose	Location
SVGA port	CN1	Third floppy drive interface	J25
Bus mouse port	CN2	External battery	J26
Serial port 1 (COM1)	CN3	Speaker	J27
Serial port 2 (COM2)	CN4	Fan power	J28
Parallel port	J13	Front panel switches & LEDs	J29
VGA pass-through	J19	IDE interface LED	J40
IDE interface	J22	32-bit external CPU/Memory module	S1
Floppy drive interface	J24	32-bit external Memory module slots	S2 & S3

USER CONFIGURABLE SETTINGS		
Function	Jumper/Switch	Position
í CMOS memory normal operation	SW1/switch 1	open
CMOS memory clear	SW1/switch 1	closed
í Password check enabled	SW1/switch 2	open
Password check disabled	SW1/switch 2	closed
í Flash BIOS write disabled	SW1/switch 3	open
Flash BIOS write enabled	SW1/switch 3	closed
í VGA port enabled	SW1/switch 4	closed
VGA port disabled	SW1/switch 4	open
í Factory configured - do not alter	E1	closed
í Factory configured - do not alter	E2	pins 1 & 2 closed
í Factory configured - do not alter	E3	closed
í Factory configured - do not alter	E4	open
í Factory configured - do not alter	E5	open



USER CONFIGURABLE SETTINGS		
Function	Jumper	Position
í Parity check enabled	E1	closed
Parity check disabled	E1	open

Note: AST CPU/Memory module part number is 202403-001 or 202403-004.

Continued on next page . . .

## AST RESEARCH, INC.

## POWER PREMIUM 386/25 (MODEL 202441-001)

... continued from previous page

DRAM CONFIGURATION		
Size	Bank 0	Bank 1
2MB	(2) 1M x 9	NONE
4MB	(2) 1M x 9	(2) 1M x 9
8MB	(2) 4M x 9	NONE
10MB	(2) 1M x 9	(2) 4M x 9
16MB	(2) 4M x 9	(2) 4M x 9
Notes: 16KB of SRAM Cache is on the CPU/Memory module. 128KB of DRAM is reserved for System and VGA BIOS shadowing and cannot be disabled. Up to two of the following memory boards may be installed in addition to the CPU/Memory module: AST part numbers 202275-004, 202275-006, 202387-001, or 202387-005.		