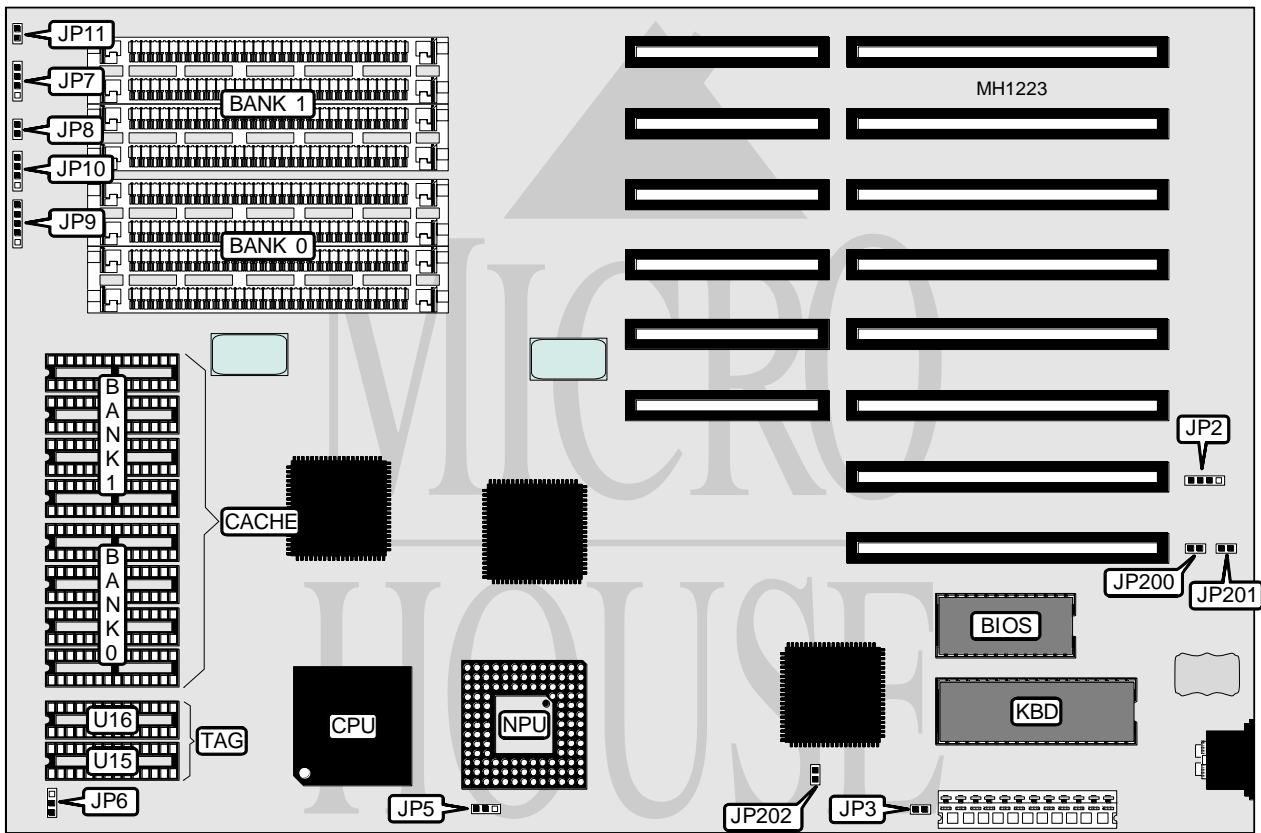


# SPRITE, INC. SM 386F (VERSION 1.0)

<b>Processor</b>	80386DX
<b>Processor Speed</b>	33/40MHz
<b>Chip Set</b>	Forex
<b>Max. Onboard DRAM</b>	32MB
<b>SRAM Cache</b>	32/64/128KB
<b>BIOS</b>	AMI/MR
<b>Dimensions</b>	330mm x 218mm
<b>I/O Options</b>	None
<b>NPU Options</b>	80387/3167



CONNECTIONS			
Purpose	Location	Purpose	Location
External battery	JP2	Power LED & keylock	JP9
Turbo LED	JP7	Speaker	JP10
Reset switch	JP8	Turbo switch	JP11

Continued on next page . . .

# SPRITE, INC.

## SM 386F (VERSION 1.0)

... continued from previous page

USER CONFIGURABLE SETTINGS		
Function	Jumper	Position
í Monitor type select color	JP3	closed
Monitor type select monochrome	JP3	open
í NPU mode select synchronous with CPU	JP5	pins 1 & 2 closed
NPU mode select asynchronous with CPU	JP5	pins 2 & 3 closed
í External battery select 3.6VDC	JP200	closed
External battery select 6.0VDC	JP200	open
í Battery select internal	JP201	closed
Battery select external	JP201	open
í CMOS memory normal operation	JP202	open
CMOS memory clear	JP202	closed

DRAM CONFIGURATION		
Size	Bank 0	Bank 1
1MB	(4) 256K x 9	NONE
2MB	(4) 256K x 9	(4) 256K x 9
4MB	(4) 1M x 9	NONE
5MB	(4) 256K x 9	(4) 1M x 9
8MB	(4) 1M x 9	(4) 1M x 9
16MB	(4) 4M x 9	NONE
17MB	(4) 256K x 9	(4) 4M x 9
20MB	(4) 1M x 9	(4) 4M x 9
32MB	(4) 4M x 9	(4) 4M x 9

SRAM CONFIGURATION					
Size	Cache SRAM	Location	TAG (U15)	TAG (U16)	JP6
32KB	(4) 8K x 8	Bank 0	NONE	(1) 8K x 8	pins 1 & 2 closed
64KB	(8) 8K x 8	Banks 0 & 1	(1) 8K x 8	(1) 8K x 8	pins 2 & 3 closed
128KB	(4) 32K x 8	Bank 0	(1) 32K x 8	NONE	pins 2 & 3 closed