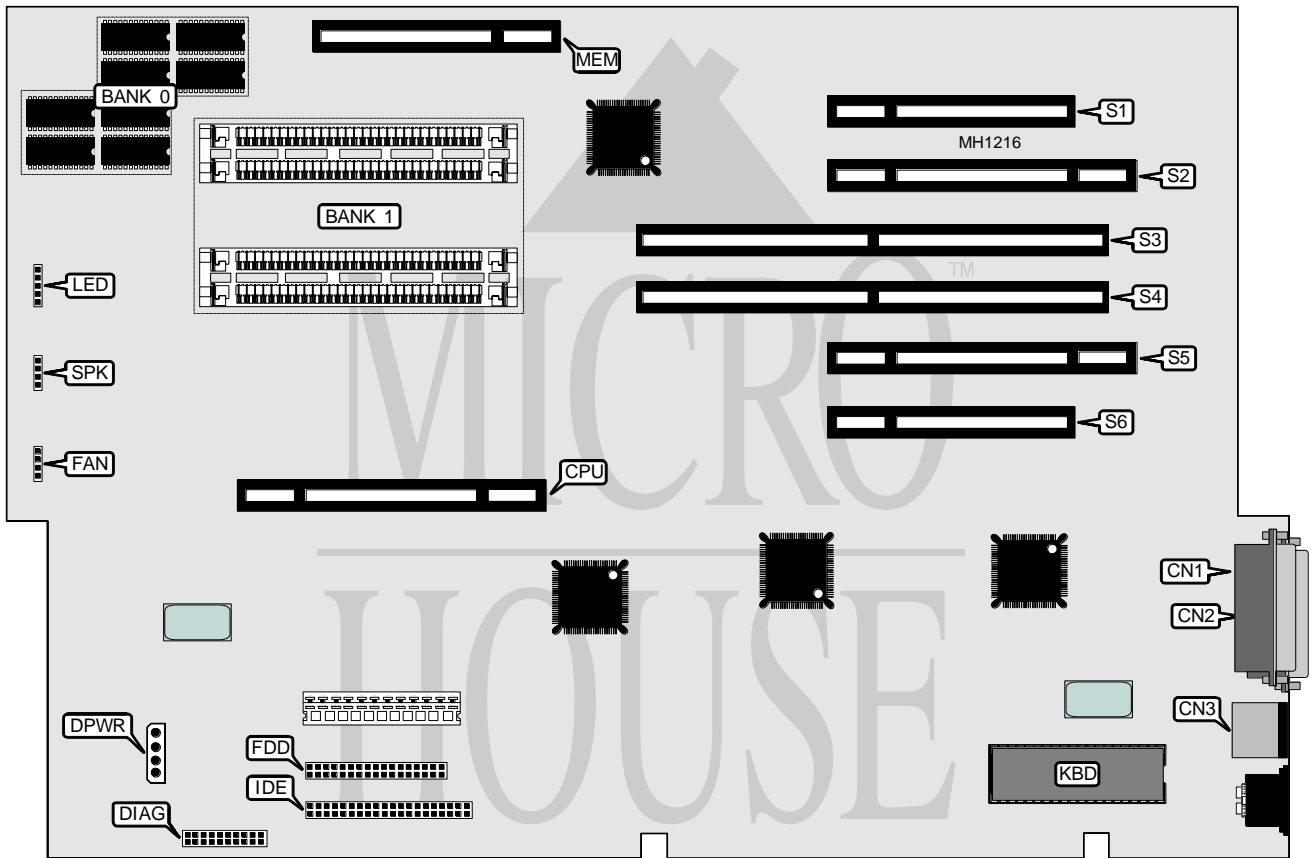


# ADVANCED LOGIC RESEARCH, INC.

## MPS (MULTI-PROCESSOR SYSTEM)

<b>Processor</b>	80386DX/80486SX/80486DX/ODP486SX (on external CPU/NPU/Cache module)
<b>Processor Speed</b>	20/25/33/50MHz
<b>Chip Set</b>	ALR
<b>Max. Onboard DRAM</b>	17MB
<b>Cache</b>	None (16KB on external 32-bit CPU/NPU/Cache module)
<b>BIOS</b>	Phoenix
<b>Dimensions</b>	385mm x 255mm
<b>I/O Options</b>	32-bit external CPU/NPU/Cache module slot, 32-bit external memory module slot bus mouse port, floppy interface, IDE interface, parallel port, serial port
<b>NPU Options</b>	80387/3167/4167 (on external CPU/NPU/Cache module)



CONNECTIONS			
Purpose	Location	Purpose	Location
Parallel port	CN1	Power LED & keylock	LED
Serial port 1	CN2	Drive power (HD or FDD)	DPWR
Bus mouse port	CN3	32-bit external CPU/NPU/Cache module	CPU
Diagnostic port	DIAG	32-bit external memory module	MEM
Fan power	FAN	32-bit MCA slots	S3 & S4
Floppy drive interface	FDD	16-bit MCA slots with video extensions	S2 & S5
IDE interface	IDE	16-bit MCA slots	S1 & S6
Speaker	SPK		

Continued on next page . . .

**ADVANCED LOGIC RESEARCH, INC.**  
**MPS (MULTI-PROCESSOR SYSTEM)**

... continued from previous page

DRAM CONFIGURATION				
Size	Bank 0	Bank 1	Bank 2	Bank 3
2MB	(8) 44256	(4) 256K x 9	NONE	NONE
3MB	(8) 44256	(4) 256K x 9	(4) 256K x 9	NONE
4MB	(8) 44256	(4) 256K x 9	(4) 256K x 9	(4) 256K x 9
6MB	(8) 44256	(4) 1M x 9	(4) 256K x 9	NONE
7MB	(8) 44256	(4) 256K x 9	(4) 256K x 9	(4) 1M x 9
7MB	(8) 44256	(4) 256K x 9	(4) 1M x 9	(4) 256K x 9
7MB	(8) 44256	(4) 1M x 9	(4) 256K x 9	(4) 256K x 9
9MB	(8) 44256	(4) 1M x 9	(4) 1M x 9	NONE
10MB	(8) 44256	(4) 256K x 9	(4) 1M x 9	(4) 1M x 9
10MB	(8) 44256	(4) 1M x 9	(4) 256K x 9	(4) 1M x 9
10MB	(8) 44256	(4) 1M x 9	(4) 1M x 9	(4) 256K x 9
13MB	(8) 44256	(4) 1M x 9	(4) 1M x 9	(4) 1M x 9
17MB	(8) 44256	(4) 4M x 9	NONE	NONE
18MB	(8) 44256	(4) 4M x 9	(4) 256K x 9	NONE
19MB	(8) 44256	(4) 256K x 9	(4) 256K x 9	(4) 4M x 9
19MB	(8) 44256	(4) 256K x 9	(4) 4M x 9	(4) 256K x 9
19MB	(8) 44256	(4) 4M x 9	(4) 256K x 9	(4) 256K x 9
21MB	(8) 44256	(4) 1M x 9	(4) 4M x 9	NONE
21MB	(8) 44256	(4) 4M x 9	(4) 1M x 9	NONE
22MB	(8) 44256	(4) 256K x 9	(4) 1M x 9	(4) 4M x 9
22MB	(8) 44256	(4) 1M x 9	(4) 256K x 9	(4) 4M x 9
22MB	(8) 44256	(4) 1M x 9	(4) 4M x 9	(4) 256K x 9
22MB	(8) 44256	(4) 4M x 9	(4) 256K x 9	(4) 1M x 9
22MB	(8) 44256	(4) 4M x 9	(4) 1M x 9	(4) 256K x 9
25MB	(8) 44256	(4) 1M x 9	(4) 1M x 9	(4) 4M x 9
25MB	(8) 44256	(4) 1M x 9	(4) 4M x 9	(4) 1M x 9
25MB	(8) 44256	(4) 4M x 9	(4) 1M x 9	(4) 1M x 9
33MB	(8) 44256	(4) 4M x 9	(4) 4M x 9	NONE
34MB	(8) 44256	(4) 256K x 9	(4) 4M x 9	(4) 4M x 9
34MB	(8) 44256	(4) 4M x 9	(4) 256K x 9	(4) 4M x 9
34MB	(8) 44256	(4) 4M x 9	(4) 4M x 9	(4) 256K x 9
37MB	(8) 44256	(4) 1M x 9	(4) 4M x 9	(4) 4M x 9
37MB	(8) 44256	(4) 4M x 9	(4) 1M x 9	(4) 4M x 9
37MB	(8) 44256	(4) 4M x 9	(4) 4M x 9	(4) 1M x 9
49MB	(8) 44256	(4) 4M x 9	(4) 4M x 9	(4) 4M x 9

Note: Banks 2 & 3 are utilized when a 32-bit external memory module is installed.