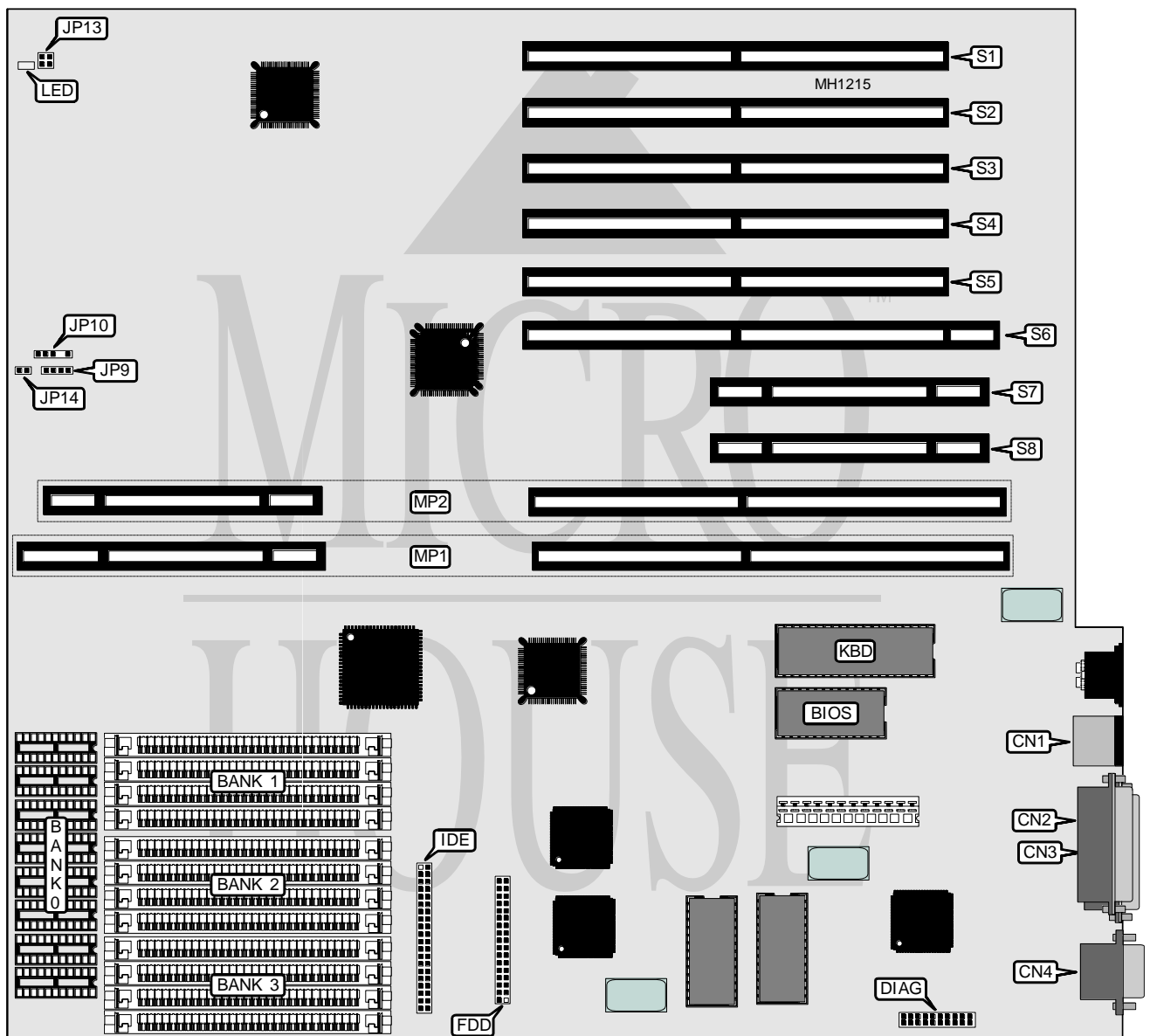


ADVANCED LOGIC RESEARCH, INC. POWERPRO/MC

Processor	80486DX
Processor Speed	33/50MHz
Chip Set	ALR
Max. Onboard DRAM	49MB
Cache	None (128/256/512KB on external 32-bit CPU/NPU/Cache module)
BIOS	Phoenix
Dimensions	371mm x 343mm
I/O Options	32-bit external CPU/NPU/Cache module slot (2) bus mouse port, floppy interface, IDE interface parallel port, serial ports (2)
NPU Options	4167 (on external 32-bit CPU/NPU/Cache module)



Continued on next page . . .

ADVANCED LOGIC RESEARCH, INC.

POWERPRO/MC

... continued from previous page

CONNECTIONS			
Purpose	Location	Purpose	Location
Bus mouse port	CN1	Power LED & keylock	JP10
Parallel port	CN2	Reset switch (pins unknown)	JP13
Serial port (COM1)	CN3	IDE interface LED	JP14
Serial port (COM2)	CN4	32-bit external CPU/NPU/Cache module (primary)	MP1
Diagnostic port	DIAG	32-bit external CPU/NPU/Cache module (secondary)	MP2
Floppy drive interface	FDD	32-bit MCA slots (5)	S1 - S5
IDE interface	IDE	32-bit MCA slot with video extension	S6
Speaker	JP9	16-bit MCA slots (2)	S7 & S8
Note: The ALR/IBM SCSI HD controller must be installed in slots S3, S4, S5 or S6.			

DRAM CONFIGURATION				
Size	Bank 0	Bank 1	Bank 2	Bank 3
1MB	(8) 44256	NONE	NONE	NONE
5MB	(8) 44256	(4) 1M x 9	NONE	NONE
17MB	(8) 44256	(4) 4M x 9	NONE	NONE
21MB	(8) 44256	(4) 1M x 9	(4) 4M x 9	NONE
33MB	(8) 44256	(4) 4M x 9	(4) 4M x 9	NONE
37MB	(8) 44256	(4) 1M x 9	(4) 4M x 9	(4) 4M x 9
49MB	(8) 44256	(4) 4M x 9	(4) 4M x 9	(4) 4M x 9