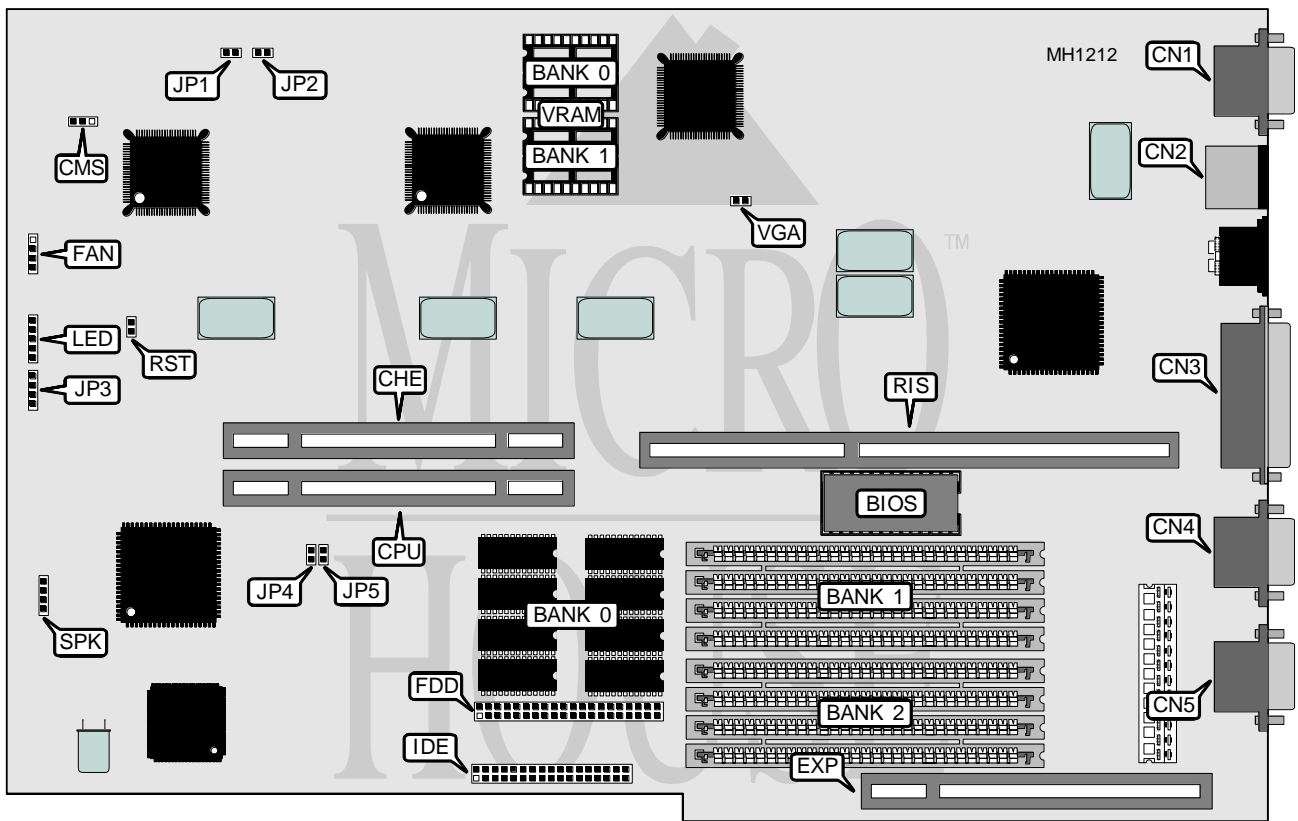


# ADVANCED LOGIC RESEARCH, INC. BUSINESS STATION

<b>Processor</b>	80386DX/80486SX/80487SX/80486DX/80486DX2 (on 32-bit external CPU/NPU card)
<b>Processor Speed</b>	25/33/50(internal)/66(internal)MHz
<b>Chip Set</b>	ALR
<b>Max. Onboard DRAM</b>	33MB
<b>Cache</b>	64/256KB (on 32-bit external cache card)
<b>BIOS</b>	Phoenix
<b>Dimensions</b>	294mm x 218mm
<b>I/O Options</b>	32-bit EISA riser card slot, 32-bit external cache card slot, 32-bit external CPU/NPU card slot, 32-bit external future expansion slot, bus mouse port, floppy interface, IDE , interface, parallel port, serial port (two), SVGA interface
<b>NPU Options</b>	4167 (on 32-bit external CPU/NPU card)



CONNECTIONS			
Purpose	Location	Purpose	Location
32-bit external cache card	CHE	32-bit future expansion card	EXP
SVGA interface	CN1	Fan power	FAN
Bus mouse port	CN2	Floppy drive interface	FDD
Parallel port	CN3	IDE interface	IDE
Serial port (COM1)	CN4	Front panel	LED
Serial port (COM2)	CN5	32-bit EISA riser card	RIS
32-bit external CPU/NPU card	CPU	Speaker	SPK

Continued on next page . . .

# ADVANCED LOGIC RESEARCH, INC. BUSINESS STATION

... continued from previous page

USER CONFIGURABLE SETTINGS		
Function	Jumper	Position
í CMOS memory normal operation	CMS	pins 2 & 3 closed
CMOS memory clear	CMS	pins 1 & 2 closed
í SVGA port enabled	VGA	open
SVGA port disabled	VGA	closed
í Factory configured - do not alter	JP1	N/A
í Factory configured - do not alter	JP2	N/A
í Factory configured - do not alter	JP3	N/A
í Factory configured - do not alter	JP4	N/A
í Factory configured - do not alter	JP5	N/A

DRAM CONFIGURATION			
Size	Bank 0	Bank 1	Bank 2
2MB	(8) 44256	(4) 256K x 9	NONE
3MB	(8) 44256	(4) 256K x 9	(4) 256K x 9
5MB	(8) 44256	(4) 1M x 9	NONE
6MB	(8) 44256	(4) 256K x 9	(4) 1M x 9
9MB	(8) 44256	(4) 1M x 9	(4) 1M x 9
17MB	(8) 44256	(4) 4M x 9	NONE
18MB	(8) 44256	(4) 256K x 9	(4) 4M x 9
21MB	(8) 44256	(4) 1M x 9	(4) 4M x 9
33MB	(8) 44256	(4) 4M x 9	(4) 4M x 9

VRAM CONFIGURATION		
Size	Bank 0	Bank 1
512KB	(2) 48256	NONE
1MB	(2) 48256	(2) 48256