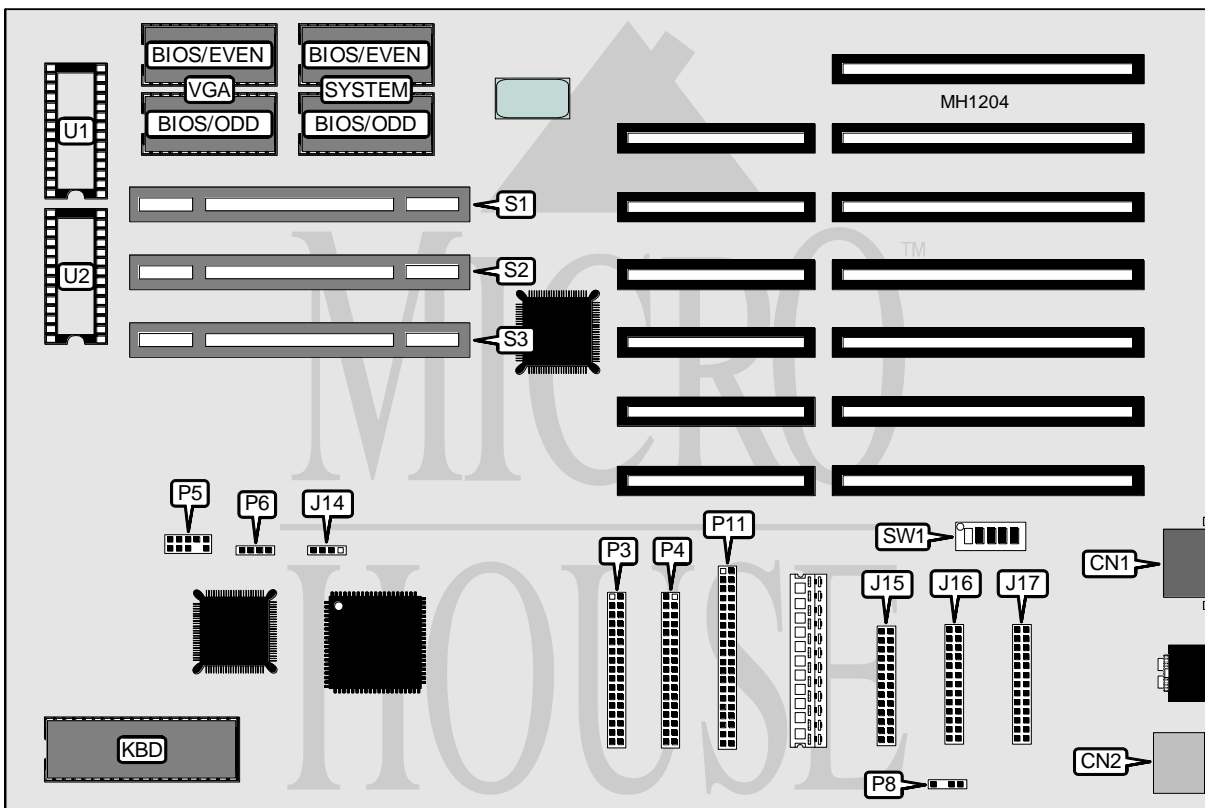


AST RESEARCH, INC.

CUPID DESKTOP CLEM ISA 386SX/16 (VER. 1)

MODELS 202360-001 & 202360-002

Processor	80386SX (on external CPU/Memory module)
Processor Speed	16MHz
Chip Set	AST
Max. Onboard DRAM	None (4MB on external CPU/Memory module)
SRAM Cache	None (16KB on external CPU/Memory module)
BIOS	AST
Dimensions	330mm x 218mm
I/O Options	32-bit external CPU/Memory module slot, 32-bit external Memory module slot (2), bus mouse port, floppy drive interface, IDE interface, parallel port, serial port (2), SVGA port
NPU Options	80387SX (on external CPU/Memory module)



CONNECTIONS			
Purpose	Location	Purpose	Location
SVGA port	CN1	Front panel switches & LEDs	P5
Bus mouse port	CN2	Speaker	P6
IDE interface LED	J14	External battery	P8
Serial port 1 (COM1)	J15	IDE interface	P11
Serial port 2 (COM2)	J16	32-bit external CPU/Memory module	S1
Parallel port	J17	32-bit external Memory module slots	S2 & S3
Floppy drive interface (A: and B:)	P3	Optional ROM (even)	U1
Third floppy drive interface	P4	Optional ROM (odd)	U2

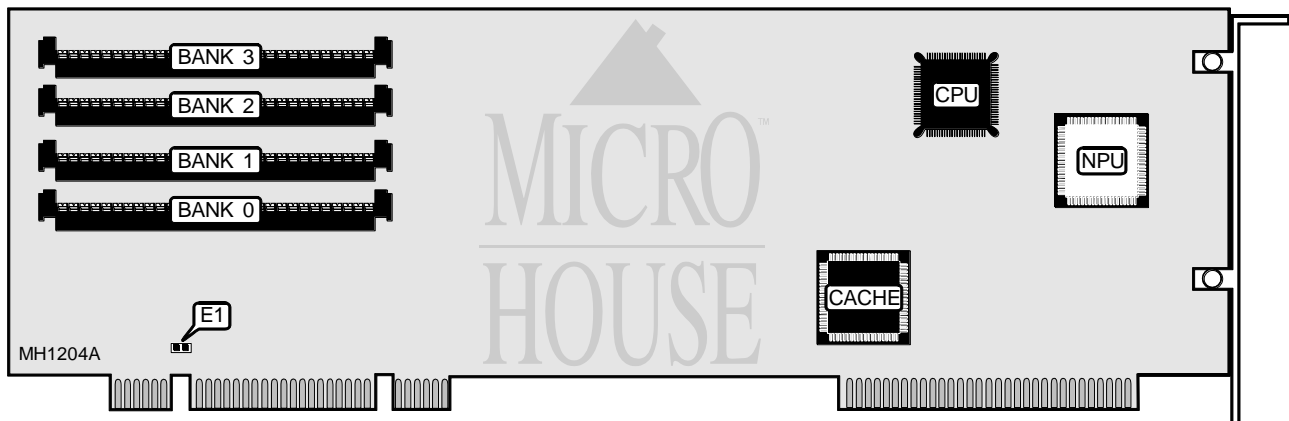
Continued on next page . . .

AST RESEARCH, INC.
 CUPID DESKTOP CLEM ISA 386SX/16 (VER. 1)
 MODELS 202360-001 & 202360-002

... continued from previous page

USER CONFIGURABLE SETTINGS		
Function	Switch SW1	Position
í Password check enabled	switch 1	open
Password check disabled	switch 1	closed
í Factory configured - do not alter	switch 2	open
í Factory configured - do not alter	switch 3	open
í Monitor type select analog VGA	switch 4	open
Monitor type select multifrequency VGA	switch 4	closed
í VGA port enabled (see note)	switch 5	closed
VGA port disabled	switch 5	open

Note: On model 202360-002 the on-board VGA port has been removed; SW1/switch 5 should be open.



USER CONFIGURABLE SETTINGS		
Function	Jumper	Position
í Parity check enabled	E1	closed
Parity check disabled	E1	open

Note: AST CPU/Memory module part number is 202337-001 or 202337-002.

DRAM CONFIGURATION				
Size	Bank 0	Bank 1	Bank 2	Bank 3
1MB	(1) 1M x 9	NONE	NONE	NONE
2MB	(1) 1M x 9	(1) 1M x 9	NONE	NONE
3MB	(1) 1M x 9	(1) 1M x 9	(1) 1M x 9	NONE
4MB	(1) 1M x 9	(1) 1M x 9	(1) 1M x 9	(1) 1M x 9

Notes: 16KB of SRAM Cache is on the CPU/Memory module. 128KB of DRAM is reserved for System and VGA BIOS shadowing and cannot be disabled. Up to two of the following memory boards may be installed in addition to the CPU/Memory module: AST part numbers 202275-001, 202275-004, 202275-006, 202387-001, or 202387-005.