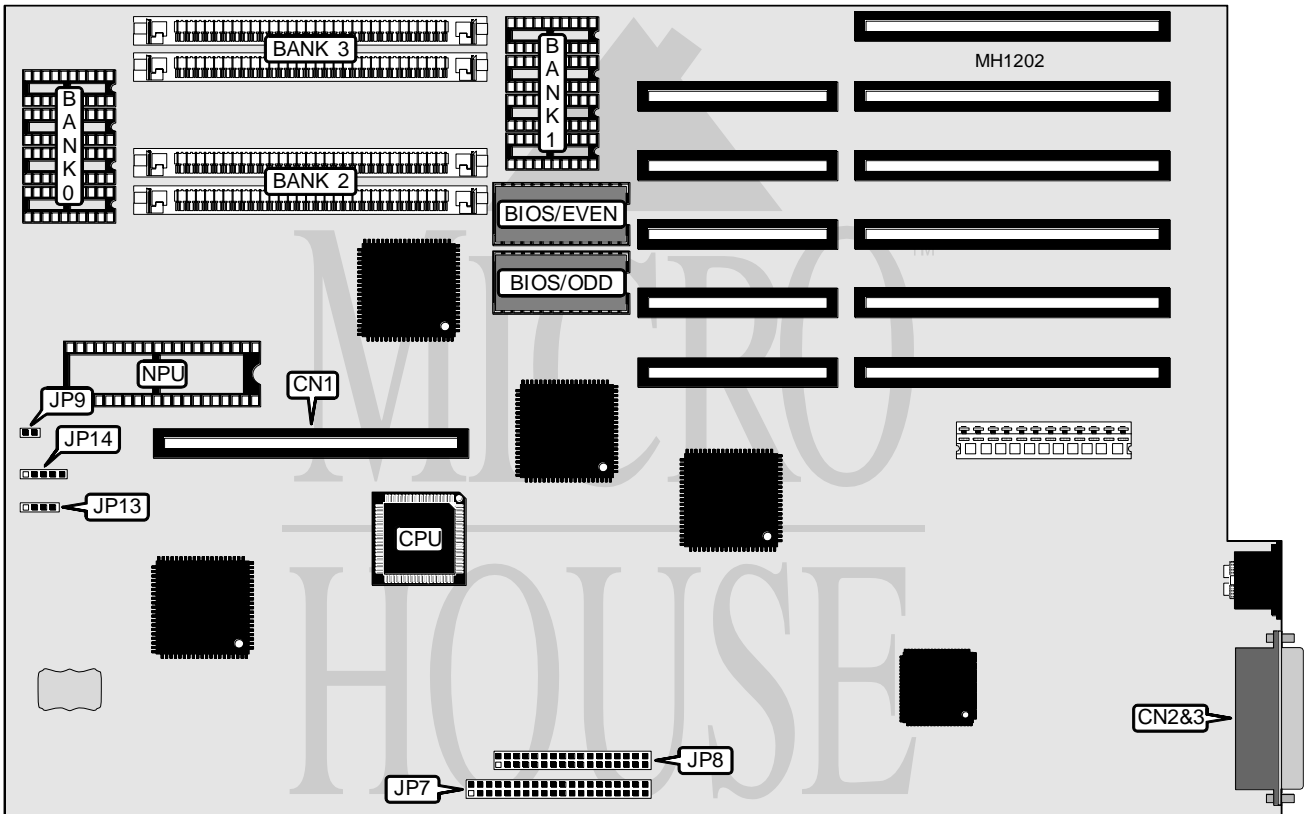


ADVANCED LOGIC RESEARCH, INC.

POWERFLEX SERIES

Processor	80286/80386SX/80486SX/80487SX/80486DX/ODP486SX
Processor Speed	12/16/20/25/33MHz
Chip Set	ALR
Max. Onboard DRAM	5MB
Cache	None (32KB on 386CSX-20 CPU module)
BIOS	Phoenix
Dimensions	330mm x 218mm
I/O Options	16/32-bit external CPU/NPU/Cache module slot, floppy interface, IDE interface, parallel port, serial port
NPU Options	80287/80387SX



CONNECTIONS			
Purpose	Location	Purpose	Location
16/32-bit external CPU/NPU/Cache module	CN1	Floppy drive interface	JP8
Serial port (COM1)	CN2	IDE interface LED	JP9
Parallel port	CN3	Speaker	JP13
IDE interface	JP7	Power LED & keylock	JP14

Continued on next page . . .

ADVANCED LOGIC RESEARCH, INC.
POWERFLEX SERIES*... continued from previous page*

DRAM CONFIGURATION				
Size	Bank 0	Bank 1	Bank 2	Bank 3
1MB	(4) 411000	(4) 411000	NONE	NONE
1.5MB	(4) 411000	(4) 411000	(2) 256K x 9	NONE
2MB	(4) 411000	(4) 411000	(2) 256K x 9	(2) 256K x 9
3MB	(4) 411000	(4) 411000	(2) 1M x 9	NONE
5MB	(4) 411000	(4) 411000	(2) 1M x 9	(2) 1M x 9