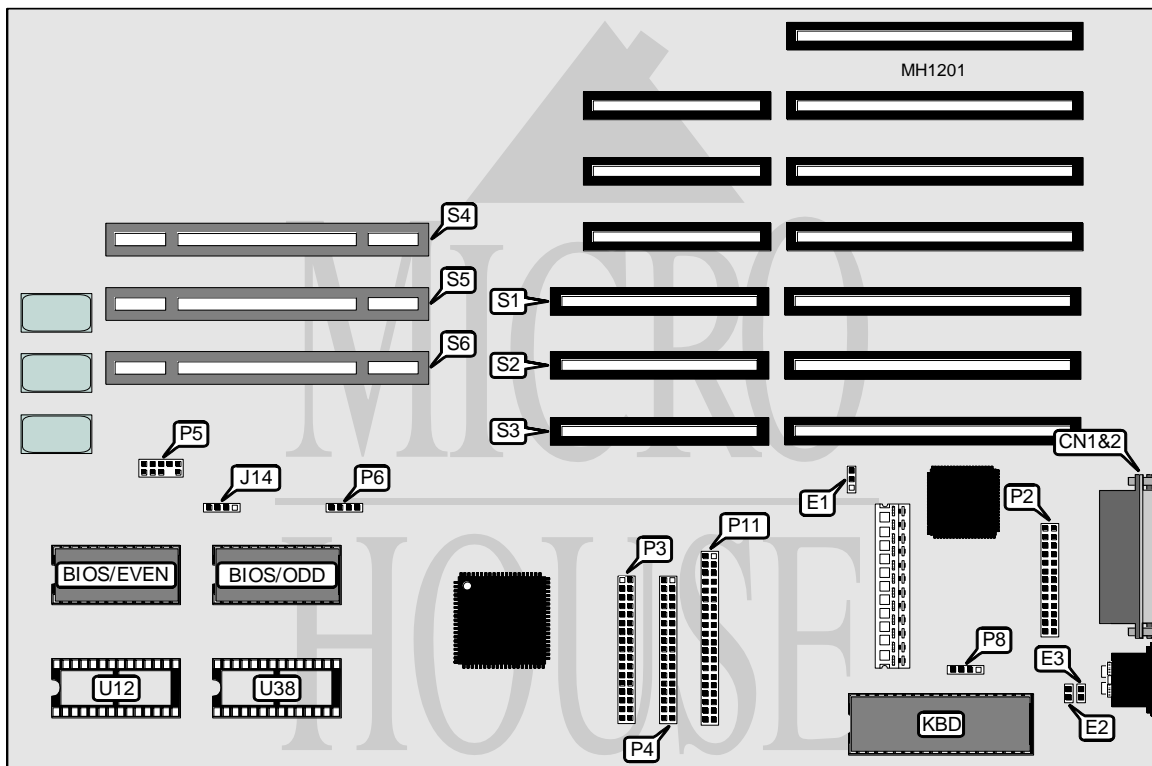


AST RESEARCH, INC. CUPID DESKTOP ISA 486/25&486/33 (VERSION 2) MODEL 202356-004 (REVISION D AND LATER)

| | |
|--------------------------|---------------------------------------------------------------------------------------------------------------------------------------------------------------------------------------------------------------|
| Processor | 80486DX (on external CPU/Memory module) |
| Processor Speed | 25/33MHz |
| Chip Set | AST |
| Max. Onboard DRAM | None (16MB on external CPU/Memory module) |
| SRAM Cache | None |
| BIOS | AST |
| Dimensions | 330mm x 218mm |
| I/O Options | 32-bit external CPU/Memory module slot 32-bit external Memory module slot (2) floppy drive interface, IDE interface parallel port, serial port (2) SMART expansion/16-bit ISA expansion slots (3) |
| NPU Options | 4167 (on external CPU/Memory module) |



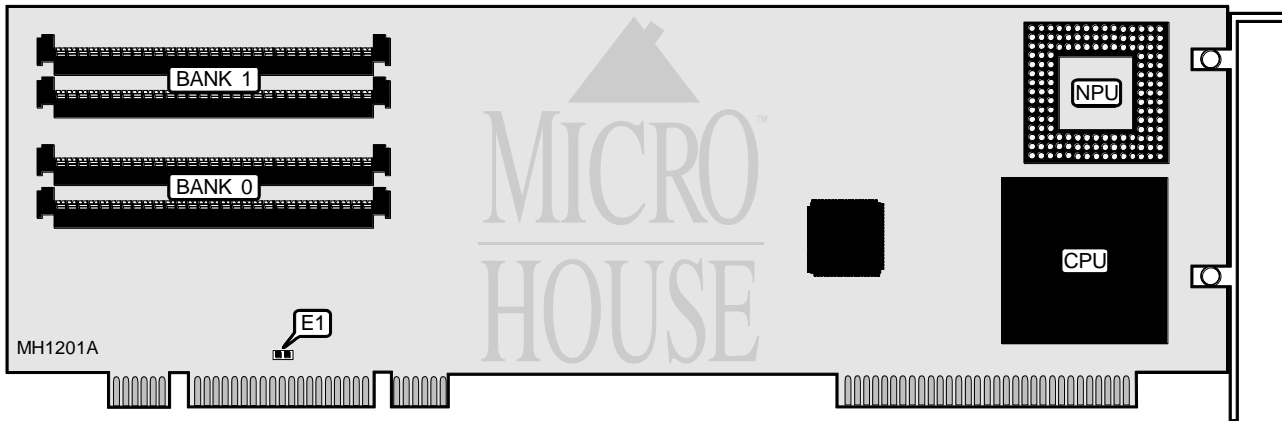
| CONNECTIONS | | | |
|------------------------------------|----------|------------------------------------|-------------|
| Purpose | Location | Purpose | Location |
| Serial port 1 (COM1) | CN1 | External battery | P8 |
| Parallel port | CN2 | IDE interface | P11 |
| IDE interface LED | J14 | SMART expansion/16-bit ISA | S1, S2 & S3 |
| Serial port 2 (COM2) | P2 | 32-bit external CPU/Memory module | S4 |
| Floppy drive interface (A: and B:) | P3 | 32-bit external Memory module slot | S5 |
| Third floppy drive interface | P4 | 32-bit external Memory module slot | S6 |
| Front panel switches & LEDs | P5 | Optional ROM (even) | U12 |
| Speaker | P6 | Optional ROM (odd) | U38 |

Continued on next page . . .

AST RESEARCH, INC.
CUPID DESKTOP ISA 486/25&486/33 (VERSION 2)
MODEL 202356-004 (REVISION D AND LATER)

... continued from previous page

| USER CONFIGURABLE SETTINGS | | |
|--------------------------------|--------|-------------------|
| Function | Jumper | Position |
| í Password check enabled | E1 | pins 2 & 3 closed |
| Password check disabled | E1 | pins 1 & 2 closed |
| í POST select normal operation | E2 | open |
| POST select continuous loop | E2 | closed |
| í Keyboard select installed | E3 | open |
| Keyboard select not installed | E3 | closed |



| USER CONFIGURABLE SETTINGS | | |
|----------------------------------------------------------------------------------------------------------------------------------------------------------------------------------------------------------------------------|--------|----------|
| Function | Jumper | Position |
| í Parity check enabled | E1 | closed |
| Parity check disabled | E1 | open |
| Note: AST CPU/Memory module part number is 202397-001, 202397-002, 202397-005, 202397-008, or 202397-009 for 25MHz systems or 202397-003, 202397-004, 202397-006, 202397-007, 202397-010, or 202397-011 for 33MHz systems. | | |

| DRAM CONFIGURATION | | |
|----------------------------------------------------------------------------------------------------------------------------------------------------------------------------------------------------------------------------------------------------------------------------|------------|------------|
| Size | Bank 0 | Bank 1 |
| 2MB | (2) 1M x 9 | NONE |
| 4MB | (2) 1M x 9 | (2) 1M x 9 |
| 8MB | (2) 4M x 9 | NONE |
| 10MB | (2) 1M x 9 | (2) 4M x 9 |
| 16MB | (2) 4M x 9 | (2) 4M x 9 |
| Notes: 128KB of DRAM is reserved for System and VGA BIOS shadowing and cannot be disabled. Up to two of the following memory boards may be installed in addition to the CPU/Memory module: AST part numbers 202275-002, 202275-004, 202275-006, 202387-001, or 202387-005. | | |