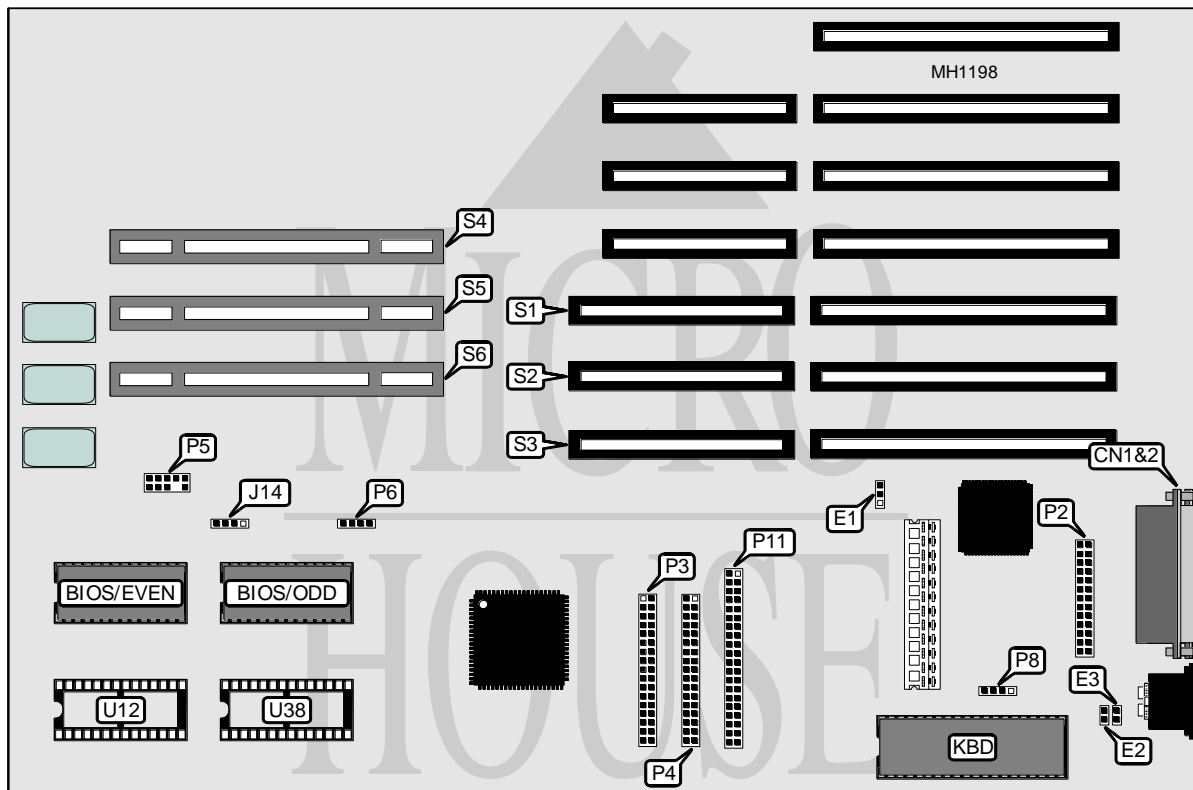


AST RESEARCH, INC.

CUPID DESKTOP ISA 386/33 (VER. 1) MODELS 202273-002, 202356-003 & 202356-004

Processor	80386DX (on external CPU/Memory module)
Processor Speed	33MHz
Chip Set	AST
Max. Onboard DRAM	None (4MB on external CPU/Memory module)
SRAM Cache	None (32KB on external CPU/Memory module)
BIOS	AST
Dimensions	330mm x 218mm
I/O Options	32-bit external CPU/Memory module slot, 32-bit external Memory module slot (2) floppy drive interface, IDE interface, parallel port, serial port (2), SMART expansion/16-bit ISA expansion slots (3)
NPU Options	80387/3167 (on external CPU/Memory module)



CONNECTIONS			
Purpose	Location	Purpose	Location
Serial port 1 (COM1)	CN1	External battery	P8
Parallel port	CN2	IDE interface	P11
IDE interface LED	J14	SMART expansion/16-bit ISA	S1, S2 & S3
Serial port 2 (COM2)	P2	32-bit external CPU/Memory module	S4
Floppy drive interface (A: and B:)	P3	32-bit external Memory module slot	S5
Third floppy drive interface	P4	32-bit external Memory module slot	S6
Front panel switches & LEDs	P5	Optional ROM (even)	U12
Speaker	P6	Optional ROM (odd)	U38

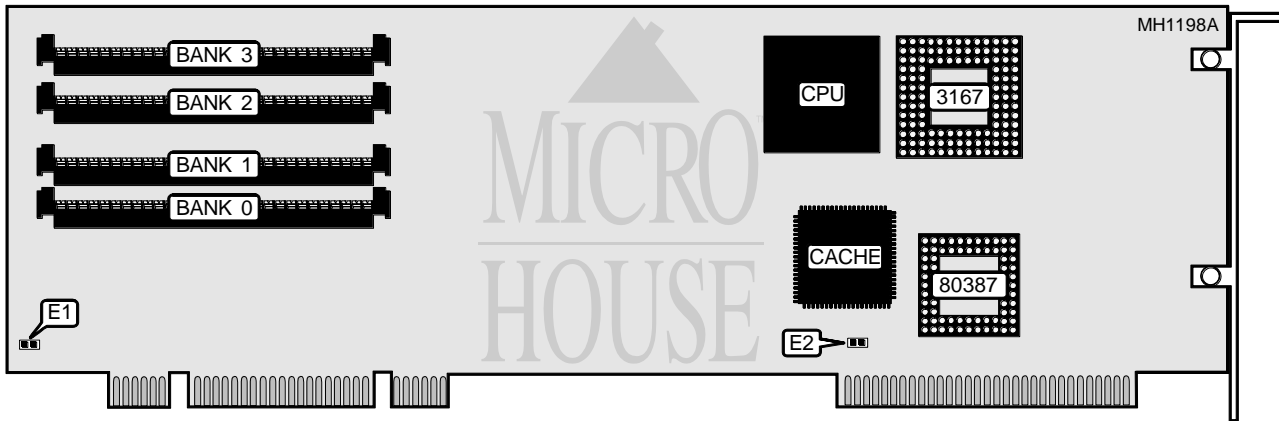
Continued on next page . . .

AST RESEARCH, INC.

CUPID DESKTOP ISA 386/33 (VER. 1) MODELS 202273-002, 202356-003 & 202356-004

... continued from previous page

USER CONFIGURABLE SETTINGS		
Function	Jumper	Position
í Password check enabled	E1	pins 2 & 3 closed
Password check disabled	E1	pins 1 & 2 closed
í POST select normal operation	E2	open
POST select continuous loop	E2	closed
í Keyboard select installed	E3	open
Keyboard select not installed	E3	closed



USER CONFIGURABLE SETTINGS		
Function	Jumper	Position
í Parity check enabled	E1	closed
Parity check disabled	E1	open
í Factory configured - do not alter	E2	open

Note: AST CPU/Memory module part number is 202347-002.

DRAM CONFIGURATION				
Size	Bank 0	Bank 1	Bank 2	Bank 3
1MB	(1) 1M x 9	NONE	NONE	NONE
2MB	(1) 1M x 9	(1) 1M x 9	NONE	NONE
3MB	(1) 1M x 9	(1) 1M x 9	(1) 1M x 9	NONE
4MB	(1) 1M x 9	(1) 1M x 9	(1) 1M x 9	(1) 1M x 9

Notes: 32KB of SRAM Cache is on the CPU/Memory module. 128KB of DRAM is reserved for System and VGA BIOS shadowing and cannot be disabled. Up to two of the following memory boards may be installed in addition to the CPU/Memory module: AST part numbers 202275-002, 202275-004, 202275-006, 202387-001, or 202387-005.