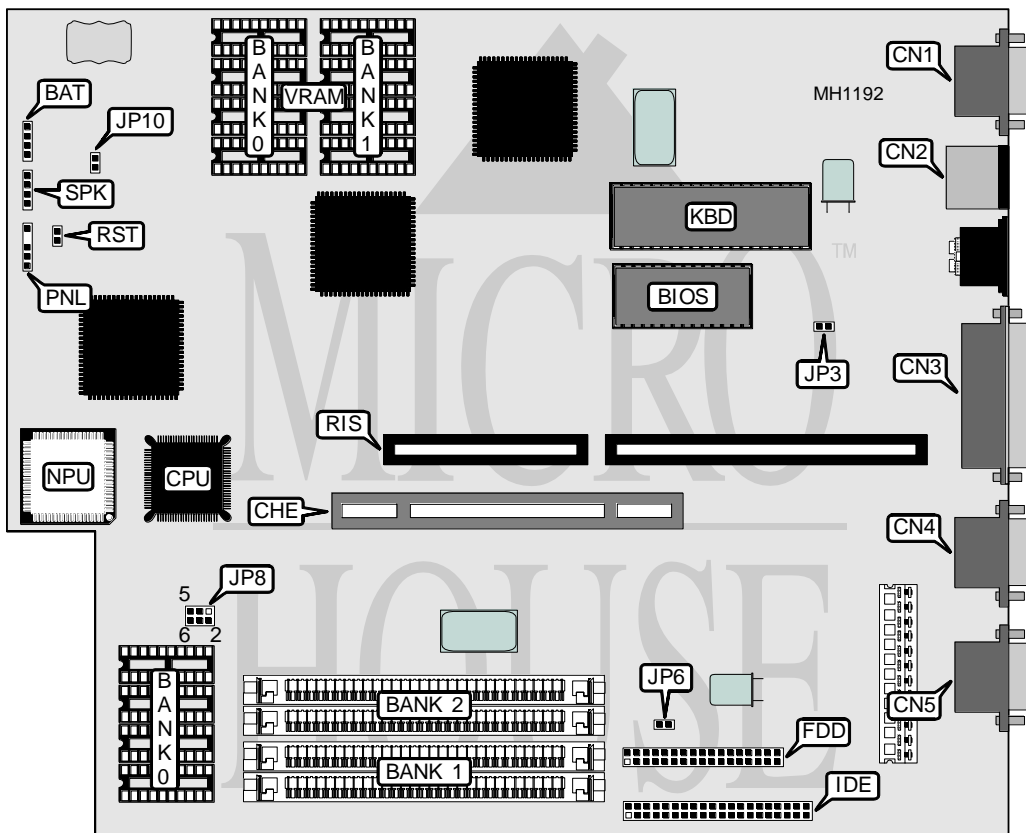


# ADVANCED LOGIC RESEARCH, INC.

## FLYER SC

**Processor** 80386SX/80486SX(on 32-bit external CPU card)  
**Processor Speed** 33MHz  
**Chip Set** ALR  
**Max. Onboard DRAM** 16MB  
**Cache** 64/128KB (on 16/32-bit external cache card)  
**BIOS** Phoenix  
**Dimensions** 264mm x 218mm  
**I/O Options** 16-bit ISA riser card slot, 16/32-bit external CPU/cache card slot  
 bus mouse port, floppy interface, IDE interface  
 parallel port, serial ports (2), VGA interface  
**NPU Options** 80387SX



### CONNECTIONS

Purpose	Location	Purpose	Location
External battery	BAT	Floppy drive interface	FDD
16/32-bit external CPU/cache card	CHE	IDE interface	IDE
VGA interface	CN1	Front panel switches & LEDs	PNL
Bus mouse port	CN2	16-bit ISA riser card	RIS
Parallel port	CN3	Reset switch	RST
Serial port 1	CN4	Speaker	SPK
Serial port 2	CN5		

Continued on next page . . .

# ADVANCED LOGIC RESEARCH, INC.

## FLYER SC

... continued from previous page

USER CONFIGURABLE SETTINGS		
Function	Jumper	Position
í Bus mouse port enabled	JP3	closed
Bus mouse port disabled	JP3	open
í VGA port enabled	JP6	closed
VGA port disabled	JP6	open
í CMOS memory normal operation	JP10	open
CMOS memory clear	JP10	closed

DRAM CONFIGURATION				
Size	Bank 0	Bank 1	Bank 2	JP8
0MB	(4) 441000	NONE	NONE	pins 3 & 5 and 4 & 6 closed
2MB	(4) 441000	NONE	NONE	pins 1 & 3 and 2 & 4 closed
4MB	(4) 441000	(2) 1M x 9	NONE	pins 1 & 3 and 2 & 4 closed
6MB	(4) 441000	(2) 1M x 9	(2) 1M x 9	pins 1 & 3 and 2 & 4 closed
8MB	(4) 441000	(2) 4M x 9	NONE	pins 3 & 5 and 4 & 6 closed
10MB	(4) 441000	(2) 4M x 9	NONE	pins 1 & 3 and 2 & 4 closed
12MB	(4) 441000	(2) 1M x 9	(2) 4M x 9	pins 1 & 3 and 2 & 4 closed
16MB	(4) 441000	(2) 4M x 9	(2) 4M x 9	pins 3 & 5 and 4 & 6 closed
Note: DRAM in Bank 0 is factory installed and cannot be altered.				