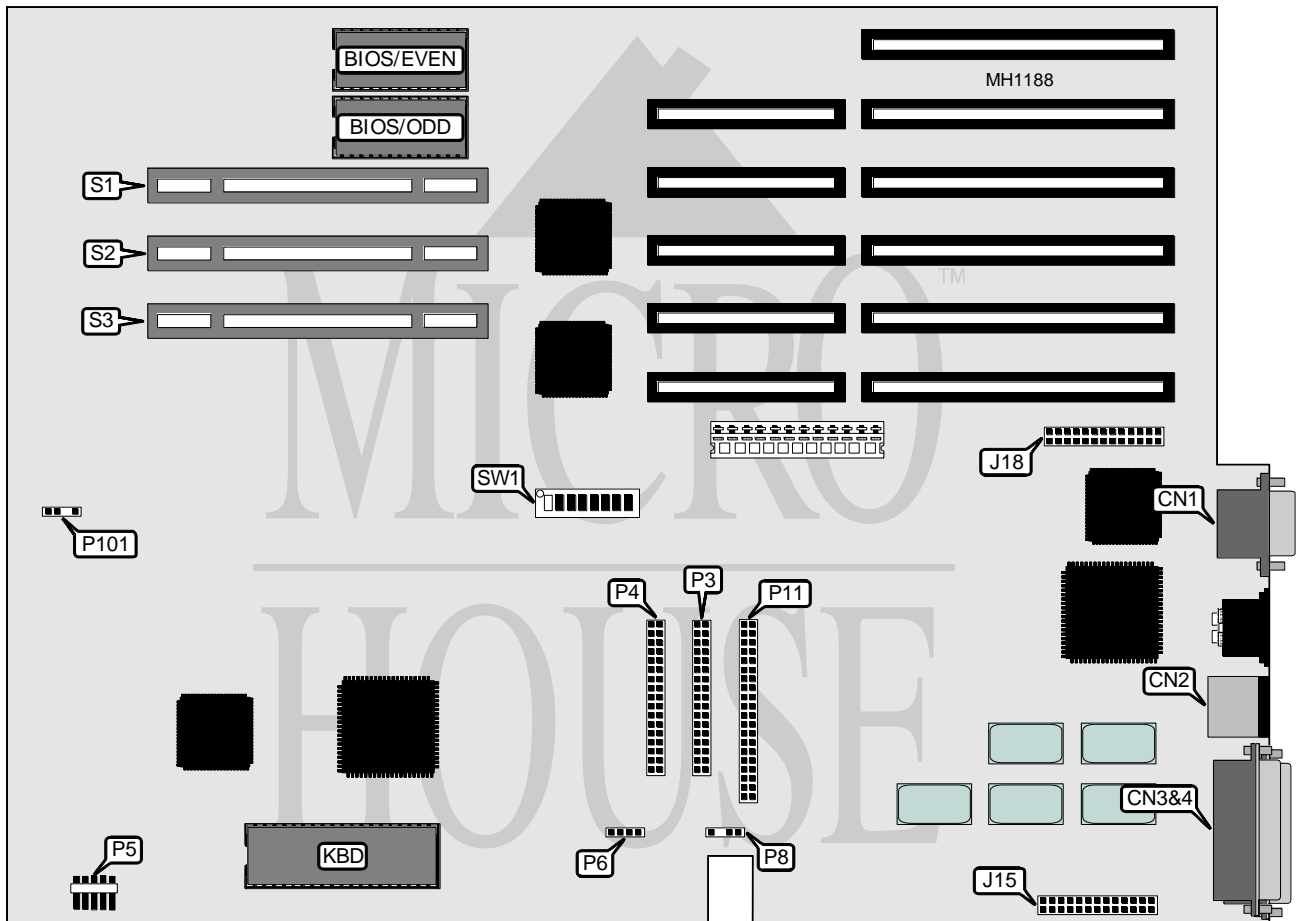


AST RESEARCH, INC.
PREMIUM II 386/25 & 386/33
MODELS 202373-001 & 202373-002

Processor	80386DX (on external CPU/Memory module)
Processor Speed	25/33MHz
Chip Set	AST
Max. Onboard DRAM	None (16MB on external CPU/Memory module)
Cache	None (16KB on external CPU/Memory module)
BIOS	AST
Dimensions	344mm x 250mm
I/O Options	32-bit external CPU/Memory module slot, 32-bit external Memory module slot (2), bus mouse port, floppy drive interface, IDE interface, parallel port, serial port (2), SVGA port
NPU Options	80387/3167(on external CPU/Memory module)



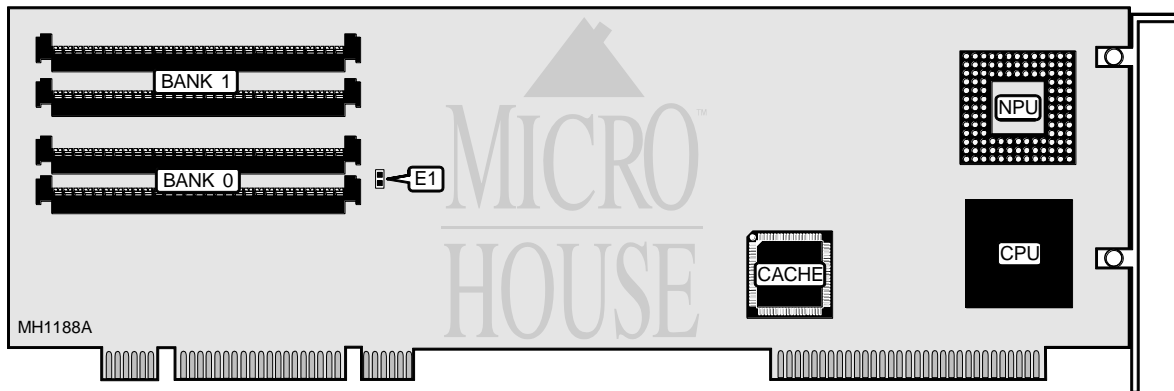
Continued on next page . . .

AST RESEARCH, INC.
PREMIUM II 386/25 & 386/33
MODELS 202373-001 & 202373-002

... continued from previous page

CONNECTIONS			
Purpose	Location	Purpose	Location
SVGA port	CN1	Front panel switches & LEDs	P5
Bus mouse port	CN2	Speaker	P6
Serial port 1	CN3	External battery	P8
Parallel port	CN4	IDE interface	P11
Serial port 2	J15	Fan power	P101
VGA pass-through	J18	32-bit external CPU/Memory module	S1
Floppy drive interface	P3	32-bit external Memory module slot	S2
Third floppy drive interface	P4	32-bit external Memory module slot	S3

USER CONFIGURABLE SETTINGS		
Function	Switch	Position
í VGA port enabled	SW1/switch 1	Closed
VGA port disabled	SW1/switch 1	Open
í Password check enabled	SW1/switch 2	Open
Password check disabled	SW1/switch 2	Closed
í Factory configured - do not alter	SW1/switch 3	Open
í Factory configured - do not alter	SW1/switch 4	Open
í Factory configured - do not alter	SW1/switch 5	Closed
í Factory configured - do not alter	SW1/switch 6	Closed
í Monitor type select PS/2 style	SW1/switch 7	Closed
Monitor type select AT style	SW1/switch 7	Open
í Monitor type select VGA or fixed-frequency	SW1/switch 8	Open
Monitor type select multi-frequency	SW1/switch 8	Closed



USER CONFIGURABLE SETTINGS		
Function	Jumper	Position
í Parity check enabled	E1	Closed
Parity check disabled	E1	Open
Note: AST CPU/Memory module part number is 202403-001 or 202403-004.		

Continued on next page...

AST RESEARCH, INC.
 PREMIUM II 386/25 & 386/33
 MODELS 202373-001 & 202373-002

... continued from previous page

DRAM CONFIGURATION		
Size	Bank 0	Bank 1
2MB	(2) 1M x 9	NONE
4MB	(2) 1M x 9	(2) 1M x 9
8MB	(2) 4M x 9	NONE
10MB	(2) 1M x 9	(2) 4M x 9
16MB	(2) 4M x 9	(2) 4M x 9
Notes: 16KB of SRAM Cache is on the CPU/Memory module. 128KB of DRAM is reserved for System and VGA BIOS shadowing and cannot be disabled. Up to two of the following memory boards may be installed in addition to the CPU/Memory module: AST part numbers 202275-004, 202275-006, 202387-001, or 202387-005.		