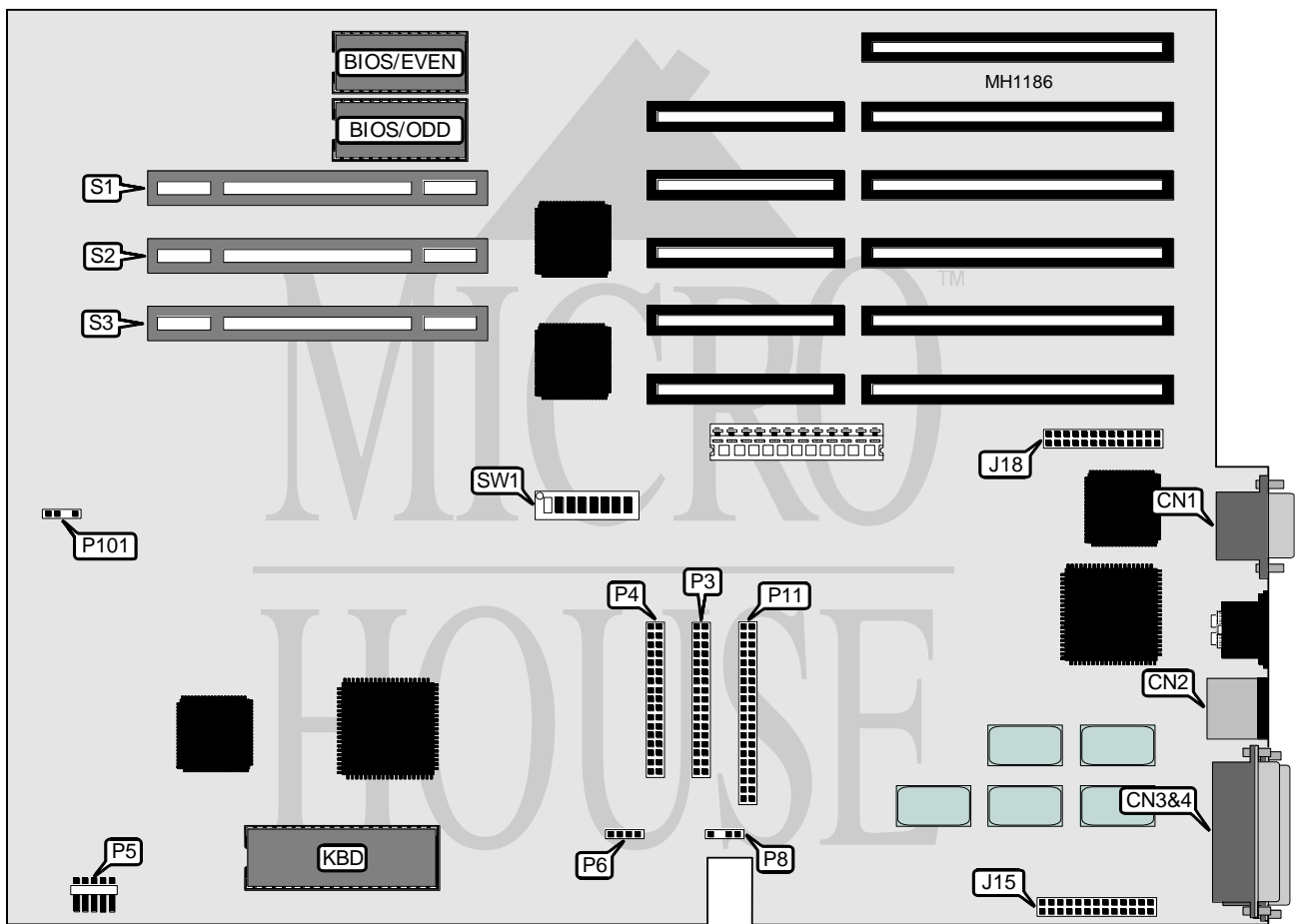


AST RESEARCH, INC.
PREMIUM II 386SX/20 (MH VER. 2)
MODELS 202373-001 & 202373-002

Processor	80386SX (on external CPU/Memory module)
Processor Speed	20MHz
Chip Set	AST
Max. Onboard DRAM	None (16MB on external CPU/Memory module)
SRAM Cache	None (16KB on external CPU/Memory module)
BIOS	AST
Dimensions	344mm x 250mm
I/O Options	16-bit external CPU/Memory module slot, 16-bit external Memory module slot (2), bus mouse port, floppy drive interface, IDE interface, parallel port, serial port (2), SVGA port
NPU Options	80387SX (on external CPU/Memory module)



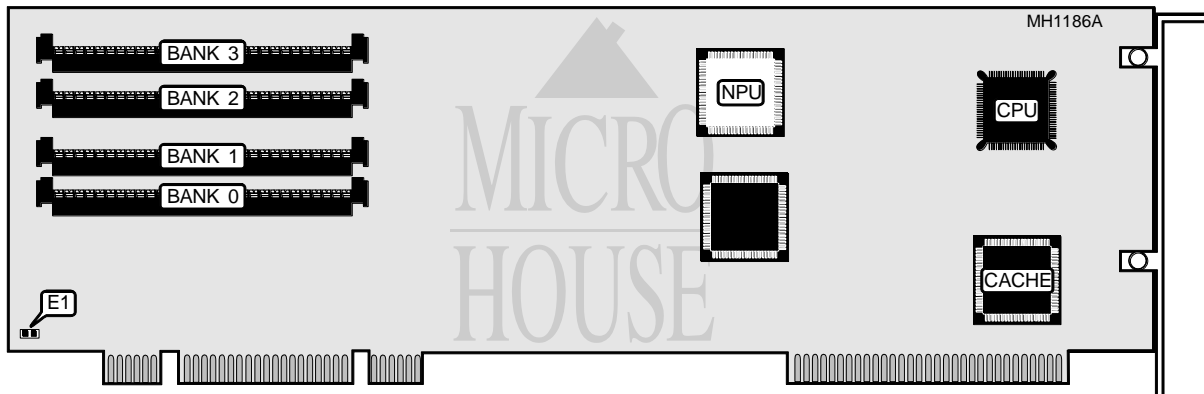
Continued on next page . . .

AST RESEARCH, INC.
PREMIUM II 386SX/20 (MH VER. 2)
MODELS 202373-001 & 202373-002

... continued from previous page

CONNECTIONS			
Purpose	Location	Purpose	Location
SVGA port	CN1	Front panel switches & LEDs	P5
Bus mouse port	CN2	Speaker	P6
Serial port 1 (COM1)	CN3	External battery	P8
Parallel port	CN4	IDE interface	P11
Serial port 2 (COM2)	J15	Fan power	P101
VGA pass-through	J18	16-bit external CPU/Memory module	S1
Floppy drive interface	P3	16-bit external Memory module slot	S2
Third floppy drive interface	P4	16-bit external Memory module slot	S3

USER CONFIGURABLE SETTINGS			
Function	Switch SW1	Position	
í VGA port enabled	switch 1	closed	
VGA port disabled	switch 1	open	
í Password check enabled	switch 2	open	
Password check disabled	switch 2	closed	
í Factory configured - do not alter	switch 3	open	
í Factory configured - do not alter	switch 4	open	
í Factory configured - do not alter	switch 5	closed	
í Factory configured - do not alter	switch 6	closed	
í Monitor type select PS/2 style	switch 7	closed	
Monitor type select AT style	switch 7	open	
í Monitor type select VGA or fixed-frequency	switch 8	open	
Monitor type select multi-frequency	switch 8	closed	



USER CONFIGURABLE SETTINGS			
Function	Jumper	Position	
í Parity check enabled	E1	closed	
Parity check disabled	E1	open	

Note: AST CPU/Memory module part number is 202438-001 or 202438-002.

Continued on next page . . .

AST RESEARCH, INC.
 PREMIUM II 386SX/20 (MH VER. 2)
 MODELS 202373-001 & 202373-002

... continued from previous page

DRAM CONFIGURATION				
Size	Bank 0	Bank 1	Bank 2	Bank 3
1MB	(1) 1M x 9	NONE	NONE	NONE
2MB	(1) 1M x 9	(1) 1M x 9	NONE	NONE
3MB	(1) 1M x 9	(1) 1M x 9	(1) 1M x 9	NONE
4MB	(1) 1M x 9	(1) 1M x 9	(1) 1M x 9	(1) 1M x 9
4MB	(1) 4M x 9	NONE	NONE	NONE
5MB	(1) 1M x 9	(1) 4M x 9	NONE	NONE
6MB	(1) 1M x 9	(1) 1M x 9	(1) 4M x 9	NONE
7MB	(1) 1M x 9	(1) 1M x 9	(1) 1M x 9	(1) 4M x 9
8MB	(1) 4M x 9	(1) 4M x 9	NONE	NONE
9MB	(1) 1M x 9	(1) 4M x 9	(1) 4M x 9	NONE
10MB	(1) 1M x 9	(1) 1M x 9	(1) 4M x 9	(1) 4M x 9
12MB	(1) 4M x 9	(1) 4M x 9	(1) 4M x 9	NONE
13MB	(1) 1M x 9	(1) 4M x 9	(1) 4M x 9	(1) 4M x 9
16MB	(1) 4M x 9	(1) 4M x 9	(1) 4M x 9	(1) 4M x 9

Notes: 16KB of SRAM Cache is on the CPU/Memory module.
 128KB of DRAM is reserved for System and VGA BIOS shadowing and cannot be disabled.
 Up to two of the following memory boards may be installed in addition to the CPU/Memory module: AST part numbers 202275-004, 202275-006, 202387-001, or 202387-005.