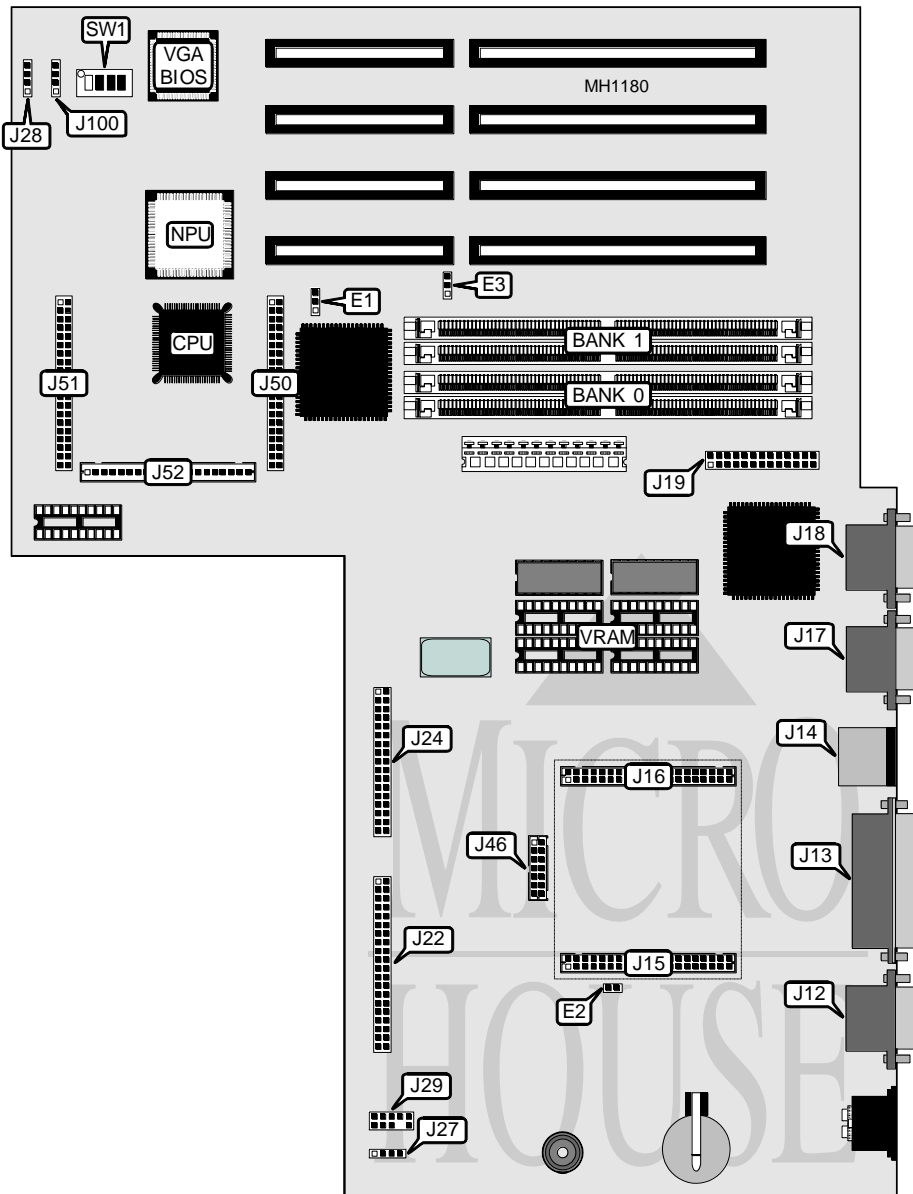


# AST RESEARCH, INC.

## BRAVO LC 3/33S (202492-101, 011)

<b>Processor</b>	80386SX
<b>Processor Speed</b>	33MHz
<b>Chip Set</b>	AST
<b>Max. Onboard DRAM</b>	16MB
<b>Cache</b>	None
<b>BIOS</b>	AST
<b>Dimensions</b>	254mm x 338mm
<b>I/O Options</b>	Bus mouse port, floppy drive interface, IDE interface, LAN module, parallel port, serial port (2), VGA port
<b>NPU Options</b>	80387SX



Continued on next page . . .

## AST RESEARCH, INC.

## BRAVO LC 3/33S (202492-101, 011)

... continued from previous page

CONNECTIONS			
Purpose	Location	Purpose	Location
Serial port 2 (COM2)	J12	IDE interface	J22
Parallel port	J13	Floppy drive interface	J24
Bus mouse port	J14	External speaker	J27
LAN module	J15 & J16	Fan power	J28
Serial port 1 (COM1)	J17	Front panel switches & LEDs	J29
VGA port	J18	Feature connectors (unknown function)	J46, J50, J51, J52
VGA pass-through	J19	IDE interface LED	J100

USER CONFIGURABLE SETTINGS		
Function	Jumper/Switch	Position
í Factory configured - do not alter	E1	pins 1 & 2 closed
í CMOS memory normal operation	E2	open
CMOS memory clear	E2	closed
í Parallel port interrupt select IRQ7	E3	pins 2 & 3 closed
Parallel port interrupt select IRQ5	E3	pins 1 & 2 closed
í VGA port enabled	SW1/switch 1	closed
VGA port disabled	SW1/switch 1	open
í Password check enabled	SW1/switch 2	open
Password check disabled	SW1/switch 2	closed
í Factory configured - do not alter	SW1/switch 3	open
í Factory configured - do not alter	SW1/switch 4	open

DRAM CONFIGURATION		
Size	Bank 0	Bank 1
2MB	(2) 256K x 36	NONE
4MB	(2) 256K x 36	(2) 256K x 36
8MB	(2) 1M x 36	NONE
16MB	(2) 1M x 36	(2) 1M x 36

VRAM CONFIGURATION	
Size	VRAM
512KB	(4) 44256