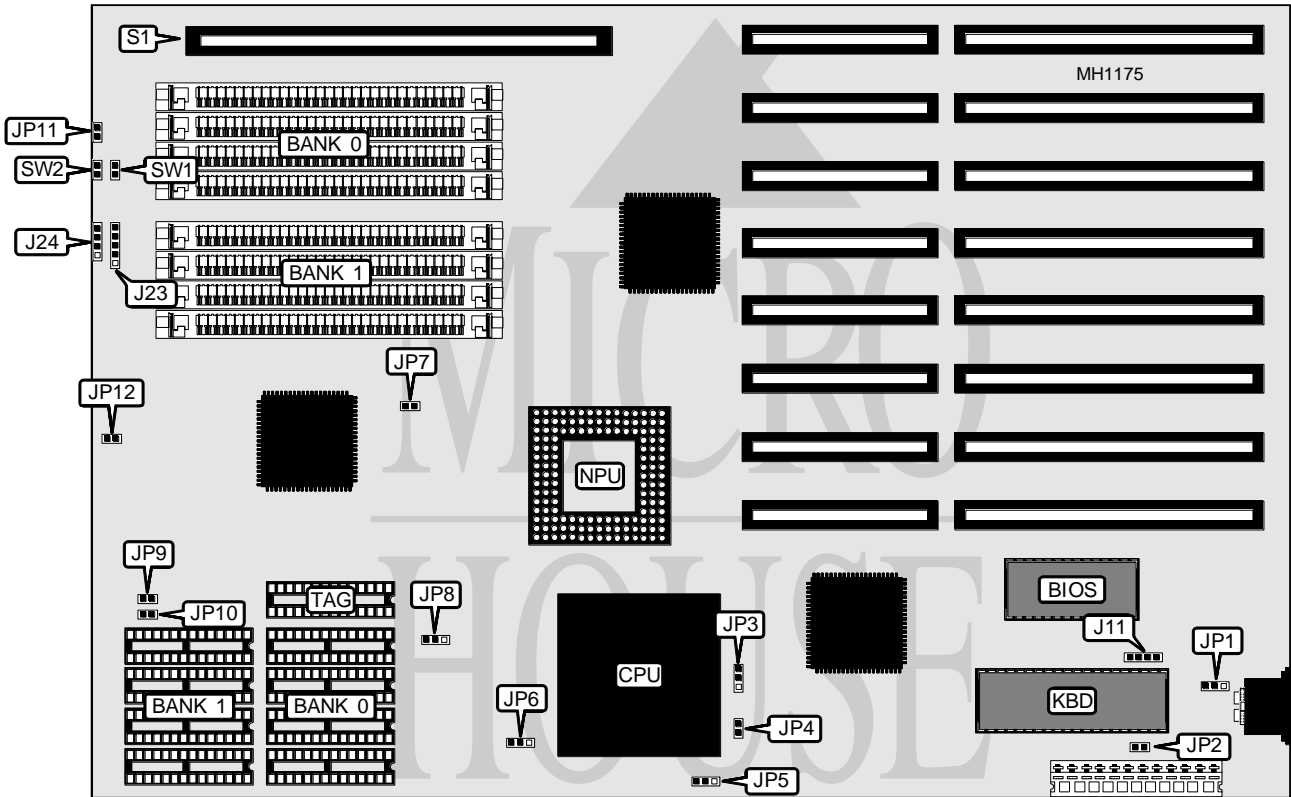


# DASH COMPUTER, INC. 486WB WRITEBACK-CACHE SYSTEM BOARD

**Processor** 80486SX/80486DX  
**Processor Speed** 33/50MHz  
**Chip Set** OPTI  
**Max. Onboard DRAM** 32MB  
**Cache** 64/256KB  
**BIOS** AMI  
**Dimensions** 330mm x 220mm  
**I/O Options** 32-bit external memory card slot  
**NPU Options** 4167



CONNECTIONS			
Purpose	Location	Purpose	Location
External battery	J11	32-bit external memory card	S1
Power LED & keylock	J23	Reset switch	SW1
Speaker	J24	Turbo switch	SW2
Turbo LED	JP11		

Continued on next page . . .

## DASH COMPUTER, INC.

## 486WB WRITEBACK-CACHE SYSTEM BOARD

... continued from previous page

## USER CONFIGURABLE SETTINGS

Function	Jumper	Position
í CMOS memory normal operation	JP1	pins 2 & 3 closed
CMOS memory clear	JP1	pins 1 & 2 closed
í Monitor type select color	JP2	closed
Monitor type select monochrome	JP2	open
í Factory configured - do not alter	JP7	open
í CPU speed select OSC/2	JP8	pins 2 & 3 closed
CPU speed select OSC/1	JP8	pins 1 & 2 closed

## DRAM CONFIGURATION

Size	Bank 0	Bank 1
1MB	(4) 256K x 9	NONE
2MB	(4) 256K x 9	(4) 256K x 9
4MB	(4) 1M x 9	NONE
5MB	(4) 256K x 9	(4) 1M x 9
8MB	(4) 1M x 9	(4) 1M x 9
16MB	(4) 4M x 9	NONE
20MB	(4) 1M x 9	(4) 4M x 9
32MB	(4) 4M x 9	(4) 4M x 9

## CPU JUMPER CONFIGURATION

CPU	JP3	JP4	JP5
80486DX	pins 2 & 3 closed	closed	pins 1 & 2 closed
80486SX	open	open	pins 2 & 3 closed

## CACHE JUMPER CONFIGURATION

Size	JP6	JP9	JP10	JP12
64KB	pins 2 & 3 closed	open	open	open
128KB	pins 1 & 2 closed	open	closed	closed
256KB	pins 2 & 3 closed	open	closed	closed

## CACHE CONFIGURATION

Size	Cache	Location	TAG
64KB	(8) 8K x 8	Banks 0 & 1	NONE
128KB	(4) 32K x 8	Banks 0	(1) 8K x 8
256KB	(8) 32K x 8	Banks 0 & 1	(1) 8K x 8