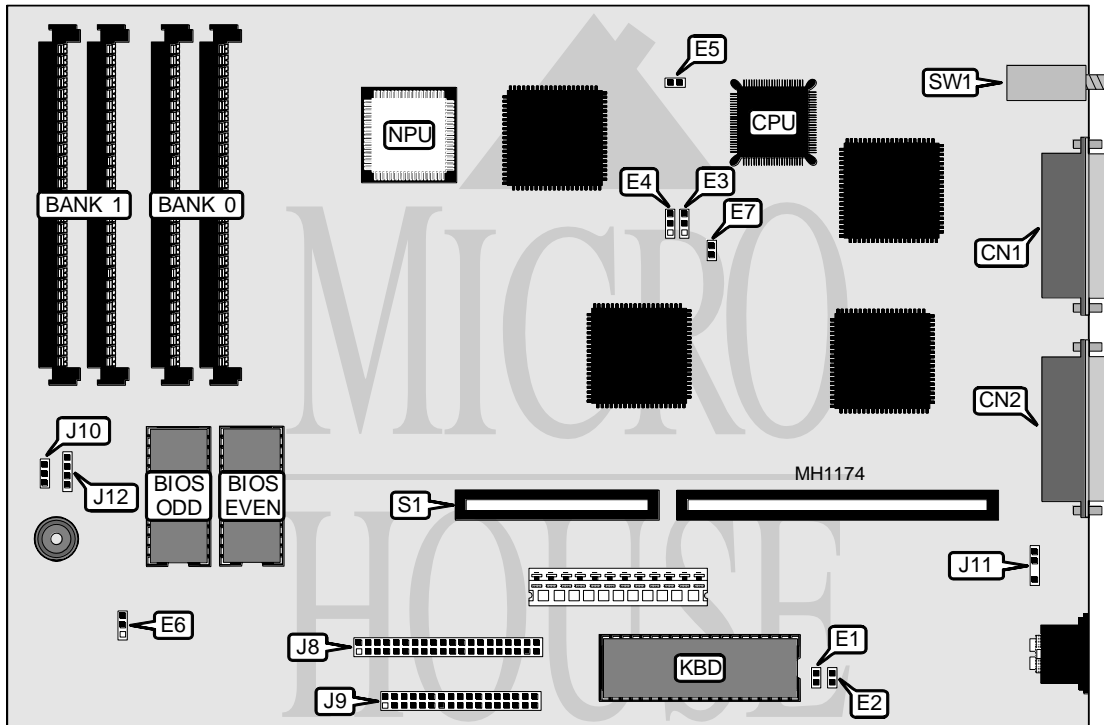


**AST RESEARCH, INC.**  
**BRAVO 386SX/16 (202343-001, 003)**

**Processor** 80386SX  
**Processor Speed** 16MHz  
**Chip Set** AST  
**Max. Onboard DRAM** 4MB  
**SRAM Cache** None  
**BIOS** AST  
**Dimensions** 286mm x 190mm  
**I/O Options** Floppy drive interface, IDE interface, parallel port, serial port  
**NPU Options** 80387SX



CONNECTIONS			
Purpose	Location	Purpose	Location
Parallel port	CN1	External battery	J11
Serial port 1 (COM1)	CN2	IDE interface LED	J12
IDE interface	J8	Riser card	S1
Floppy drive interface	J9	Reset switch	SW1
Power LED	J10		

Continued on next page . . .

**AST RESEARCH, INC.**  
**BRAVO 386SX/16 (202343-001, 003)**

... continued from previous page

USER CONFIGURABLE SETTINGS		
Function	Jumper	Position
í POST loop disabled (factory test)	E1	open
POST loop enabled	E1	closed
í Keyboard select installed	E2	open
Keyboard select not installed	E2	closed
í Factory configured - do not alter	E3	pins 2 & 3 closed
í Factory configured - do not alter	E4	pins 2 & 3 closed
í Factory configured - do not alter	E5	closed
í Monitor type select color	E6	pins 1 & 2 closed
Monitor type select monochrome	E6	pins 2 & 3 closed
í Factory configured - do not alter	E7	closed

DRAM CONFIGURATION		
Size	Bank 0	Bank 1
512KB	(2) 256K x 9	NONE
1MB	(2) 256K x 9	(2) 256K x 9
2MB	(2) 1M x 9	NONE
4MB	(2) 1M x 9	(2) 1M x 9