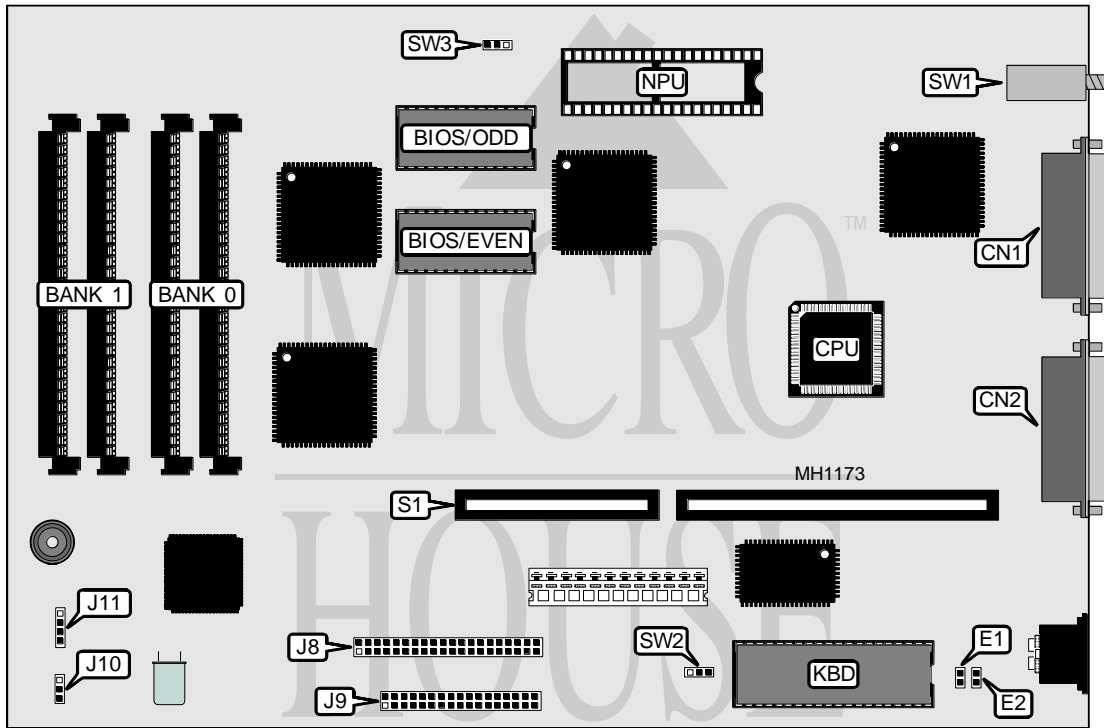


AST RESEARCH, INC.

BRAVO/286 (202286-002, 202354-001)

Processor	80286
Processor Speed	8MHz
Chip Set	AST
Max. Onboard DRAM	4MB
SRAM Cache	None
BIOS	AST
Dimensions	286mm x 190mm
I/O Options	Floppy drive interface, IDE interface, parallel port, serial port
NPU Options	80287



CONNECTIONS			
Purpose	Location	Purpose	Location
Parallel port	CN1	Power LED	J10
Serial port 1 (COM1)	CN2	IDE interface LED	J11
IDE interface	J8	Riser card	S1
Floppy drive interface	J9	Reset switch	SW1
Note: Connector J11 is only present on part number 202354-001.			

Continued on next page . . .

AST RESEARCH, INC.

BRAVO/286 (202286-002, 202354-001)

... continued from previous page

USER CONFIGURABLE SETTINGS		
Function	Jumper	Position
í Factory configured - do not alter	E1	open
í Factory configured - do not alter	E2	open
í Monitor type select color	SW2	pins 1 & 2 closed
Monitor type select monochrome	SW2	pins 2 & 3 closed
í Factory configured - do not alter	SW3	pins 1 & 2 closed
Note: On some board revisions SW2 is a two position switch with the settings marked "Color" and "Mono". SW2 is shown here as a three pin jumper with unverified settings.		

DRAM CONFIGURATION		
Size	Bank 0	Bank 1
512KB	(2) 256K x 9	NONE
640KB	(2) 256K x 9	(2) 64K x 9
1MB	(2) 256K x 9	(2) 256K x 9
2MB	(2) 1M x 9	NONE
4MB	(2) 1M x 9	(2) 1M x 9