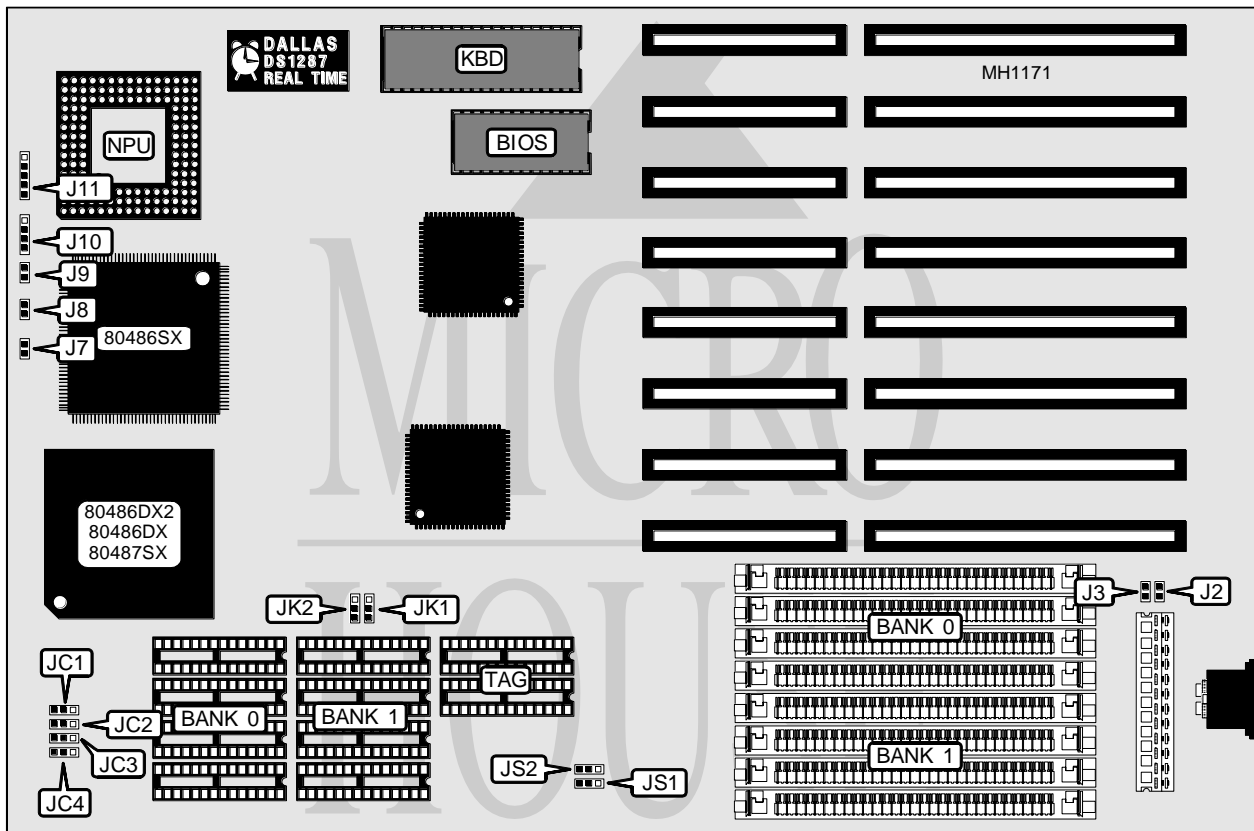


# FIRST INTERNATIONAL COMPUTER, INC.

## 486 - V C C A C H E

|                          |  |
|--------------------------|--|
| <b>Processor</b>         | 80486SX/80487SX/80486DX/80486DX2               |
| <b>Processor Speed</b>   | 16/20/25/33/40/50(internal)/50/66(internal)MHz |
| <b>Chip Set</b>          | VT   |
| <b>Max. Onboard DRAM</b> | 128MB  |
| <b>SRAM Cache</b>        | 64/128/256KB                                   |
| <b>BIOS</b>              | Award  |
| <b>Dimensions</b>        | 330mm x 218mm                                  |
| <b>I/O Options</b>       | None   |
| <b>NPU Options</b>       | 4167   |



| CONNECTIONS  |          |                     |          |
|--------------|----------|---------------------|----------|
| Purpose      | Location | Purpose             | Location |
| Turbo LED    | J7       | Speaker             | J10      |
| Turbo switch | J8       | Power LED & keylock | J11      |
| Reset switch | J9       |                     |          |

Continued on next page . . .

# FIRST INTERNATIONAL COMPUTER, INC.

## 486-VC CACHE

... continued from previous page

### USER CONFIGURABLE SETTINGS

| Function                         | Jumper    | Position          |
|----------------------------------|-----------|-------------------|
| í CMOS memory normal operation   | J2        | open              |
| CMOS memory clear                | J2        | closed            |
| í Monitor type select monochrome | J3        | open              |
| Monitor type select color        | J3        | closed            |
| í CPU speed select OSC1/1        | JK1 & JK2 | pins 2 & 3 closed |
| CPU speed select OSC1/2          | JK1 & JK2 | pins 1 & 2 closed |

### DRAM CONFIGURATION

| Size  | Bank 0       | Bank 1       |
|-------|--------------|--------------|
| 1MB   | (4) 256K x 9 | NONE         |
| 2MB   | (4) 256K x 9 | (4) 256K x 9 |
| 4MB   | (4) 1M x 9   | NONE         |
| 5MB   | (4) 256K x 9 | (4) 1M x 9   |
| 5MB   | (4) 1M x 9   | (4) 256K x 9 |
| 8MB   | (4) 1M x 9   | (4) 1M x 9   |
| 16MB  | (4) 4M x 9   | NONE         |
| 17MB  | (4) 256K x 9 | (4) 4M x 9   |
| 17MB  | (4) 4M x 9   | (4) 256K x 9 |
| 20MB  | (4) 4M x 9   | (4) 1M x 9   |
| 32MB  | (4) 4M x 9   | (4) 4M x 9   |
| 64MB  | (4) 16M x 9  | NONE         |
| 65MB  | (4) 16M x 9  | (4) 256K x 9 |
| 68MB  | (4) 16M x 9  | (4) 4M x 9   |
| 80MB  | (4) 16M x 9  | (4) 4M x 9   |
| 128MB | (4) 16M x 9  | (4) 16M x 9  |

### SRAM CONFIGURATION

| Size  | Cache SRAM  | Location    | TAG/Dirty Bit | JS1        | JS2        |
|-------|-------------|-------------|---------------|------------|------------|
| 64KB  | (8) 8K x 8  | Banks 0 & 1 | (2) 8K x 8    | pins 1 & 2 | pins 1 & 2 |
| 128KB | (4) 32K x 8 | Bank 0      | (2) 8K x 8    | pins 1 & 2 | pins 2 & 3 |
| 256KB | (8) 32K x 8 | Banks 0 & 1 | (2) 32K x 8   | pins 2 & 3 | pins 2 & 3 |

Note: Pins designated should be in the closed position.

### CPU TYPE CONFIGURATION

| CPU Type | JC1               | JC2               | JC3               | JC4               |
|----------|-------------------|-------------------|-------------------|-------------------|
| 80486DX2 | pins 1 & 2 closed | pins 1 & 2 closed | pins 1 & 2 closed | pins 1 & 2 closed |
| 80486DX  | pins 1 & 2 closed | pins 1 & 2 closed | pins 1 & 2 closed | pins 1 & 2 closed |
| 80487SX  | pins 1 & 2 closed | pins 1 & 2 closed | pins 2 & 3 closed | pins 2 & 3 closed |
| 80486SX  | pins 2 & 3 closed | pins 2 & 3 closed | pins 2 & 3 closed | open              |