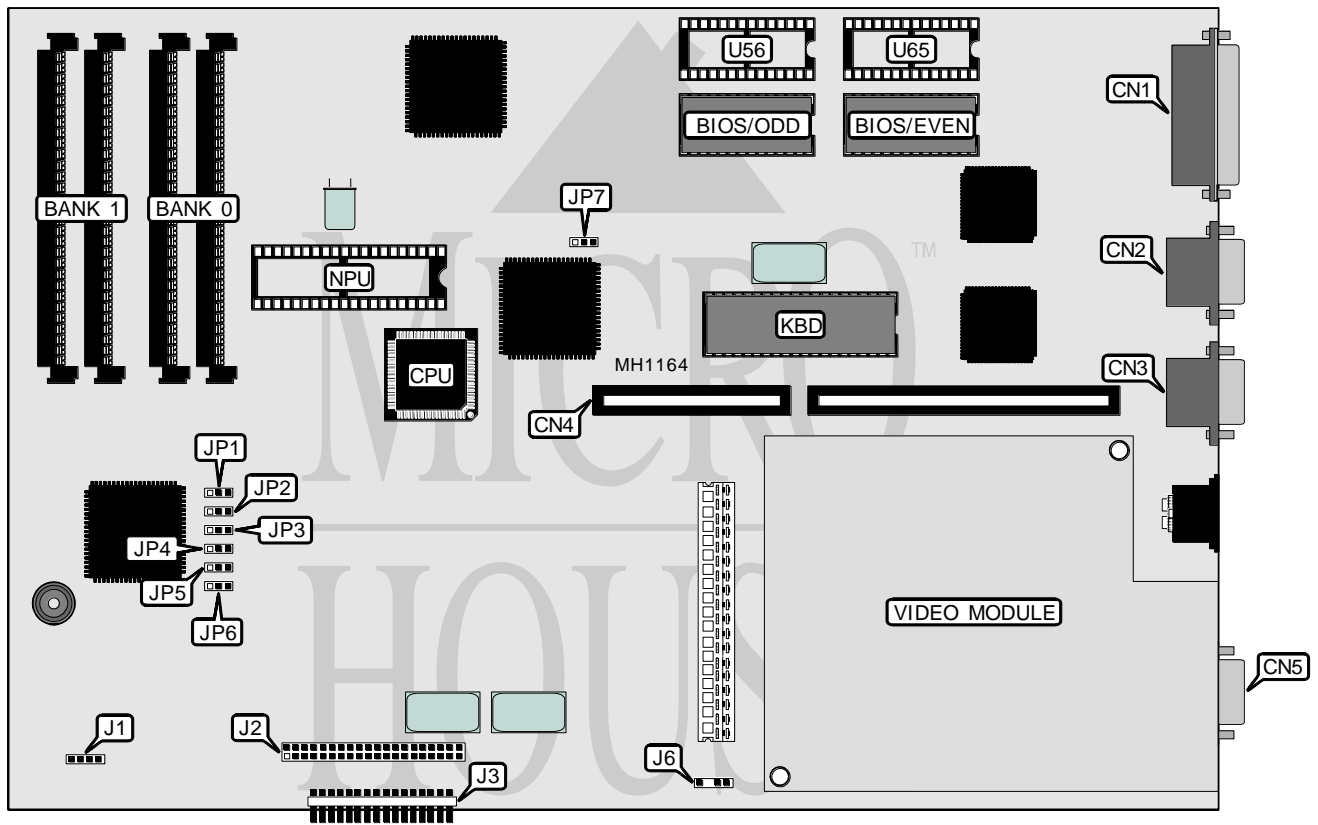


# AST RESEARCH, INC. PREMIUM WORKSTATION/286

<b>Processor</b>	80286
<b>Processor Speed</b>	10MHz
<b>Chip Set</b>	AST
<b>Max. Onboard DRAM</b>	4MB
<b>Cache</b>	None
<b>BIOS</b>	AST
<b>Dimensions</b>	330mm x 218mm
<b>I/O Options</b>	Floppy drive controller module, IDE interface, parallel port, serial ports (2), video controller module
<b>NPU Options</b>	80287



CONNECTIONS			
Purpose	Location	Purpose	Location
Parallel port	CN1	IDE interface	J2
Serial port 2 (COM2)	CN2	Floppy drive controller module	J3
Serial port 1 (COM1)	CN3	External battery	J6
Riser card	CN4	Optional ROM (odd)	U56
Video port	CN5	Optional ROM (even)	U65
Front panel switches & LEDs	J1		

Continued on next page . . .

**AST RESEARCH, INC.**  
**PREMIUM WORKSTATION/286**

... continued from previous page

USER CONFIGURABLE SETTINGS		
Function	Jumper	Position
í BIOS type select 27128	JP7	pins 1 & 2 closed
BIOS type select 27256	JP7	pins 2 & 3 closed
í Factory configured - do not alter	JP8	open
Note: Jumper JP8 may not be present on all board revisions.		

DRAM CONFIGURATION			
Size	Jumpers JP1 through JP6	Bank 0	Bank 1
512KB	pins 1 & 2 closed	(2) 256K x 9	NONE
1MB	pins 1 & 2 closed	(2) 256K x 9	(2) 256K x 9
2MB	pins 2 & 3 closed	(2) 1M x 9	NONE
4MB	pins 2 & 3 closed	(2) 1M x 9	(2) 1M x 9