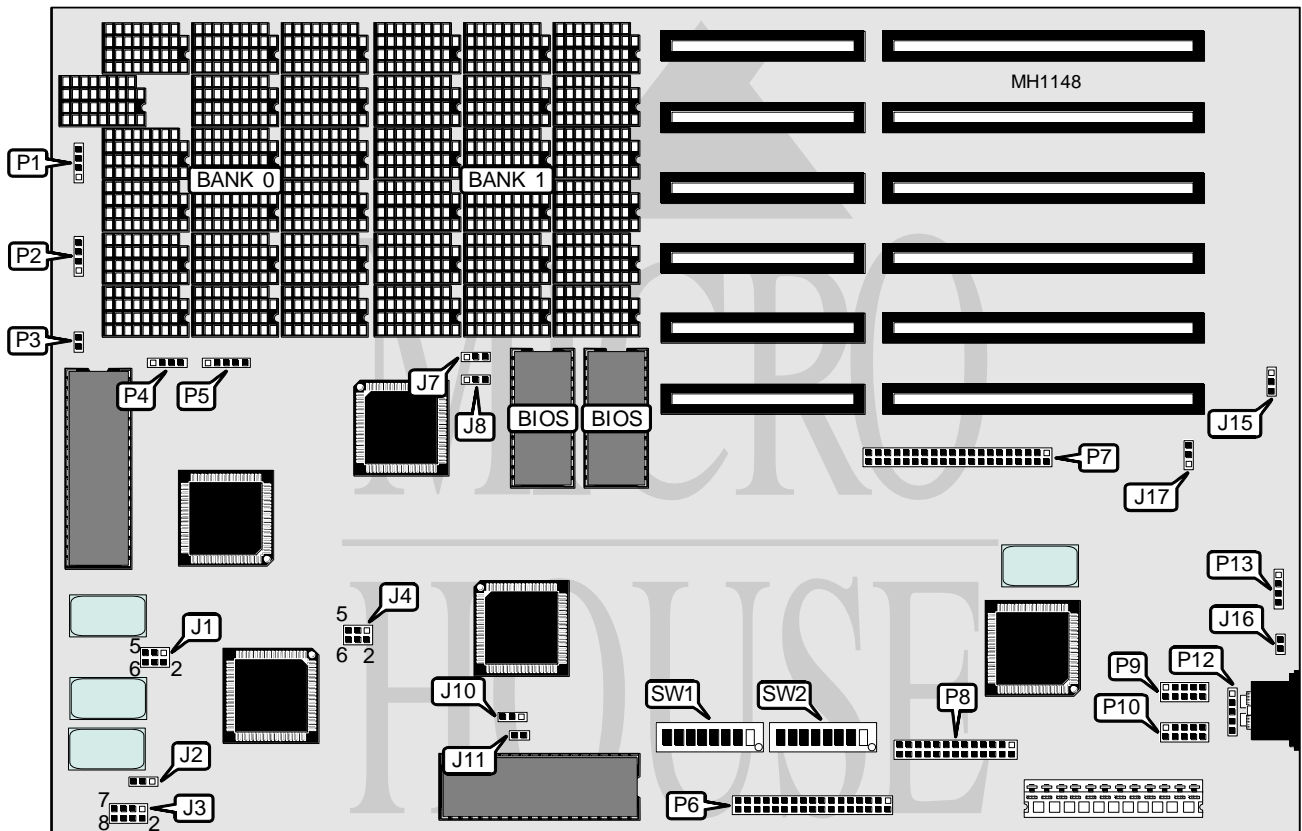


INFORMTECH INTERNATIONAL, INC.

BABY 286A10

Processor	80286
Processor Speed	10/12MHz
Chip Set	Unknown
Max. Onboard DRAM	32MB
Cache	None
BIOS	Award
Dimensions	330mm x 218mm
I/O Options	Floppy drive interface, IDE interface, parallel port, serial ports (2)
NPU Options	80287



CONNECTIONS			
Purpose	Location	Purpose	Location
Turbo LED	P1	IDE interface	P7
Speaker	P2	Parallel port	P8
Reset switch	P3	Serial port 1	P9
IDE interface LED	P4	Serial port 2	P10
Power LED & keylock	P5	Auxiliary keyboard	P12
Floppy drive interface	P6	External battery	P13

Continued on next page . . .

INFORMTECH INTERNATIONAL, INC.

BABY 286AIO

... continued from previous page

USER CONFIGURABLE SETTINGS		
Function	Jumper/Switch	Position
í Keyboard controller clock speed select 6MHz	J2	pins 1 & 2 closed
Keyboard controller clock speed select 12MHz	J2	pins 2 & 3 closed
í NPU speed select 8MHz	J3	pins 3 & 4 closed
NPU speed select 6MHz	J3	pins 1 & 2 closed
NPU speed select 10MHz	J3	pins 5 & 6 closed
NPU speed select 12MHz	J3	pins 7 & 8 closed
í DRAM speed select 100ns	J4	pins 3 & 4 closed
DRAM speed select 80ns	J4	pins 1 & 2 closed
DRAM speed select 120ns	J4	pins 5 & 6 closed
í CPU speed select switchable from hardware (see below)	J10	Open
CPU speed select switchable from keyboard	J10	pins 1 & 2 closed
í Memory size select total amount installed	J11	Open
Memory size select 256KB only (for testing purposes)	J11	Closed
í Power good signal detect from power supply	J15	pins 2 & 3 closed
Power good signal detect from board	J15	pins 1 & 2 closed
í Battery type select Alkaline 4.5VDC	J16	pins 1 & 2 closed
Battery type select Lithium 6VDC	J16	Open
í DRAM wait states select zero	SW1/4	On
DRAM wait state select one	SW1/4	Off
í Monitor type select color	SW1/5	On
Monitor type select monochrome	SW1/5	Off
í Serial port 1 at 3F8-3FF using IRQ4 enabled	SW2/1	On
Serial port 1 at 3F8-3FF using IRQ4 disabled	SW2/1	Off
í Serial port 2 at 2F8-2FF using IRQ3 enabled	SW2/2	On
Serial port 2 at 2F8-2FF using IRQ3 disabled	SW2/2	Off
í Floppy drive interface enabled	SW2/5	On
Floppy drive interface disabled	SW2/5	Off
í Early address latch enabled (#EALE) signal select enabled	SW2/7	Off
Address latch enable (#BALE) signal select enabled	SW2/7	On
í Factory configured - do not alter	SW2/8	N/A

DRAM CONFIGURATION		
Size	Bank 0	Bank 1
512KB	(18) 41256	NONE
640KB	(18) 41256	(18) 4164
1MB	(18) 41256	(18) 41256
2MB	(18) 411000	NONE
4MB	(18) 411000	(18) 411000

Continued on next page...

INFORMTECH INTERNATIONAL, INC.

BABY 286AIO

... continued from previous page

DRAM SWITCH CONFIGURATION			
Size	SW1/1	SW1/2	SW1/3
512KB	On	On	N/A
640KB	On	Off	On
1MB	On	Off	Off
2MB	Off	On	Off
4MB	Off	Off	Off

CPU SPEED CONFIGURATION				
Speed	J1 pins 1 & 2	J1 pins 3 & 4	J1 pins 5 & 6	J10
OSC Y1/2	Open	Open	Closed	Open
8MHz	Closed	Closed	Closed	pins 2 & 3 closed
10MHz	Closed	Open	Open	Open
12MHz	Open	Closed	Open	Open

I/O BUS WAIT STATE CONFIGURATION				
8-bit slot	16-bit slot	SW1/6	SW1/7	SW1/8
4 wait states	1 wait state	Off	On	On
6 wait states	2 wait states	Off	On	Off
8 wait states	3 wait states	Off	Off	On
10 wait states	4 wait states	Off	Off	Off
4 wait states	1 wait states	On	N/A (see note)	N/A (see note)

Note: When SW1/6 is closed, the dynamic wait state mode is enabled which automatically sets the wait states to accommodate the slowest card on the I/O bus.

BIOS CONFIGURATION		
Type	J7	J8
27128	pins 1 & 2 closed	pins 1 & 2 closed
27256	pins 1 & 2 closed	pins 2 & 3 closed
27512	pins 2 & 3 closed	pins 2 & 3 closed

PARALLEL PORT CONFIGURATION		
IRQ	SW2/3	SW2/4
IRQ7	On	Off
IRQ5	On	On
Disabled	Off	Off

IDE CONFIGURATION		
Setting	J17	SW2/6
Enabled	pins 2 & 3 closed	On
Disabled	pins 1 & 2 closed	Off