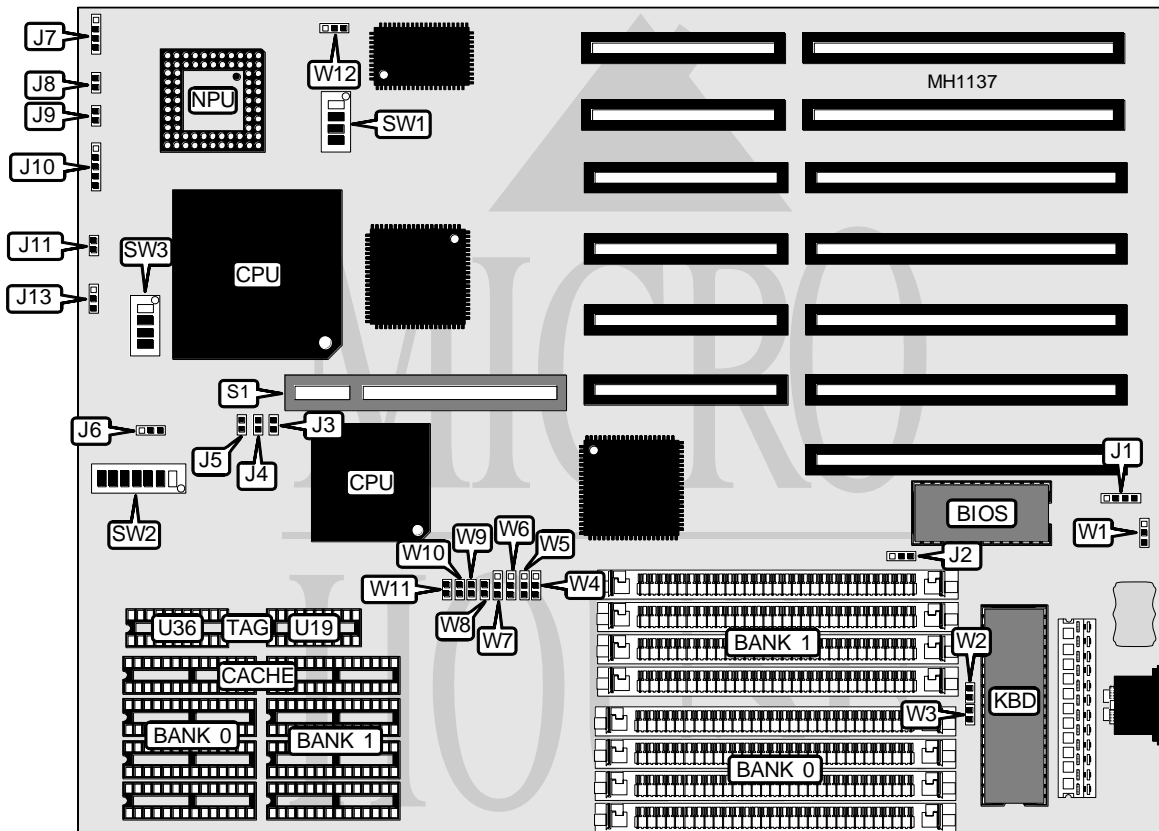


# EFA CORPORATION

## ECA 34M50HL

<b>Processor</b>	80386DX/80486DX/80486DX2
<b>Processor Speed</b>	16/20/25/33/40/50(internal)/50/66(internal)MHz
<b>Chip Set</b>	UMC
<b>Max. Onboard DRAM</b>	32MB
<b>Cache</b>	64/128/256KB
<b>BIOS</b>	AMI
<b>Dimensions</b>	254mm x 218mm
<b>I/O Options</b>	32-bit VESA local bus slot
<b>NPU Options</b>	80387



CONNECTIONS			
Purpose	Location	Purpose	Location
External battery	J1	Power LED & keylock	J10
Speaker	J7	Turbo switch	J11
Turbo LED	J8	32-bit VESA local bus slot	S1
Reset switch	J9		

Continued on next page . . .

# EFA CORPORATION

## ECA 34M50HL

... continued from previous page

### USER CONFIGURABLE SETTINGS

Function	Jumper	Position
í BIOS type select 27256/27512	J2	pins 2 & 3 closed
BIOS type select 271024	J2	pins 1 & 2 closed
í Battery type select internal	W1	Closed
Battery type select external	W1	Open
í Normal operation	W2	Open
Self test	W2	Closed
í Monitor type select monochrome	W3	Closed
Monitor type select color	W3	Open
í CMOS memory normal operations	W12	pins 1 & 2 closed
CMOS memory clear	W12	pins 2 & 3 closed

### DRAM CONFIGURATION

Size	Bank 0	Bank 1
1MB	(4) 256K x 9	NONE
2MB	(4) 256K x 9	(4) 256K x 9
4MB	(4) 1M x 9	NONE
5MB	(4) 256K x 9	(4) 1M x 9
8MB	(4) 1M x 9	(4) 1M x 9
16MB	(4) 4M x 9	NONE
20MB	(4) 1M x 9	(4) 4M x 9
32MB	(4) 4M x 9	(4) 4M x 9

### CACHE CONFIGURATION

Size	Bank 0	Bank 1	TAG (U19 & U36)
64KB	(4) 8K x 8	(4) 8K x 8	(2) 8K x 8
128KB	(4) 32K x 8	NONE	(2) 32K x 8
256KB	(4) 32K x 8	(4) 32K x 8	(2) 32K x 8

### CACHE JUMPER CONFIGURATION

Size	W4	W5	W6	W7	W8	W9	W10	W11
64KB	1 & 2	Open	1 & 2	1 & 2	Open	Open	Open	Open
128KB	2 & 3	1 & 2	2 & 3	1 & 2	Closed	Open	Closed	Open
256KB	1 & 2	2 & 3	2 & 3	2 & 3	Closed	Closed	Closed	Closed

Note: Pins designated should be in the closed position.

### CPU TYPE CONFIGURATION

Type	J6	J13	SW2/1	SW2/2	SW2/3	SW2/4
80386DX	2 & 3	1 & 2	On	On	On	On
80486SX-20	1 & 2	1 & 2	Off	Off	Off	Off
80486SX-25	1 & 2	1 & 2	Off	Off	Off	Off
80487SX	1 & 2	1 & 2	Off	Off	Off	Off
80486DX	1 & 2	2 & 3	Off	Off	Off	Off
80486DX2	1 & 2	2 & 3	Off	Off	Off	Off

Note: Pins designated should be in the closed position

Continued on next page ...

# EFA CORPORATION

## ECA 34M50HL

... continued from previous page

CPU TYPE CONFIGURATION (CON'T)							
Type	SW2/5	SW2/6	SW2/7	SW3/1	SW3/2	SW3/3	SW3/4
80386DX	On	On	On	On	On	Off	Off
80486SX-20	Off	Off	Off	Off	Off	On	On
80486SX-25	Off	Off	Off	Off	Off	On	Off
80487SX	Off	Off	Off	On	On	Off	Off
80486DX	Off	Off	Off	On	On	Off	Off
80486DX2	Off	Off	Off	On	On	Off	Off

Note: Pins designated should be in the closed position

CPU TYPE & SPEED CONFIGURATION						
Type	Speed	SW1/1	SW1/2	SW1/3	SW1/4	
80486DX2-66	33MHz	On	Off	On	On	
80486DX2-50	25MHz	On	On	Off	On	
ODP486SX-66	33MHz	On	Off	On	On	
ODP486SX-50	25MHz	On	On	Off	On	
80486DX-50	50MHz	Off	Off	Off	Off	
80486DX-33	33MHz	Off	Off	Off	On	
80486DX-25	25MHz	On	On	Off	On	
80487SX-25	25MHz	On	On	Off	On	
80487SX-20	40MHz	Off	Off	On	Off	
80486SX-25	25MHz	On	On	Off	On	
80486SX-20	40MHz	Off	Off	On	Off	
80386DX-33	66MHz	Off	Off	Off	On	
80386DX-20	44MHz	On	Off	Off	Off	

VESA WAIT STATE CONFIGURATION			
Wait state	J3	J4	J5
Auto detect	Closed	Open	Open
0	Open	Open	Open
1	Open	Closed	Open