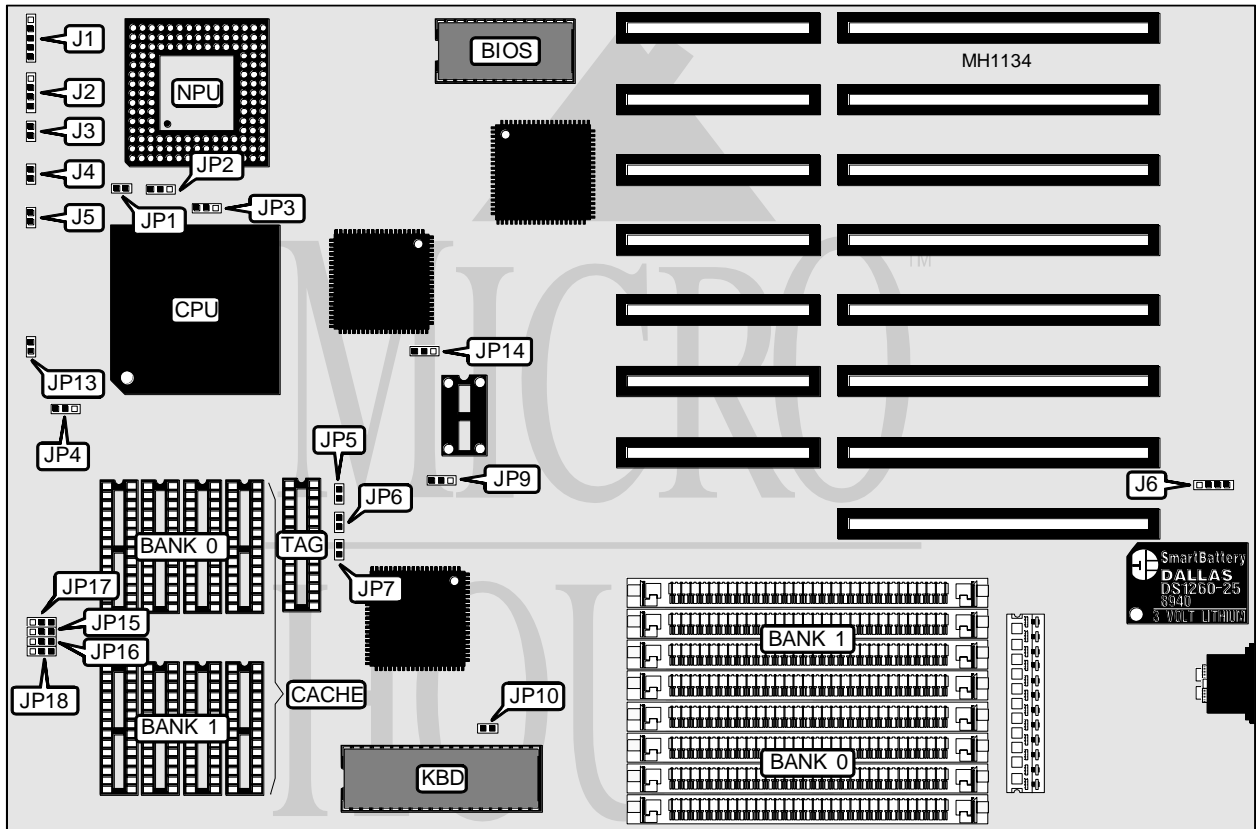


# DATAEXPERT CORPORATION

## OPTI-495WB VER 2.0

|                          |                          |
|--------------------------|--------------------------|
| <b>Processor</b>         | 80486SX/80486DX/ODP486SX |
| <b>Processor Speed</b>   | 20/25/33/50MHz           |
| <b>Chip Set</b>          | OPTI                     |
| <b>Max. Onboard DRAM</b> | 32MB                     |
| <b>Cache</b>             | 64/128/256/512KB         |
| <b>BIOS</b>              | AMI                      |
| <b>Dimensions</b>        | 330mm x 218mm            |
| <b>I/O Options</b>       | None                     |
| <b>NPU Options</b>       | 4167                     |



| CONNECTIONS         |          |                  |          |
|---------------------|----------|------------------|----------|
| Purpose             | Location | Purpose          | Location |
| Power LED & keylock | J1       | Turbo switch     | J4       |
| Speaker             | J2       | Turbo LED        | J5       |
| Reset switch        | J3       | External battery | J6       |

Continued on next page . . .

# DATAEXPERT CORPORATION

## OPTI-495WB VER 2.0

... continued from previous page

### USER CONFIGURABLE SETTINGS

| Function                       | Jumper | Position          |
|--------------------------------|--------|-------------------|
| í CMOS memory normal operation | J6     | pins 2 & 3 closed |
| CMOS memory clear              | J6     | pins 3 & 4 closed |
| í CPU speed select 20/25/33MHz | JP9    | pins 2 & 3 closed |
| CPU speed select 50MHz         | JP9    | pins 1 & 2 closed |
| í Monitor type select color    | JP10   | Closed            |
| Monitor type select monochrome | JP10   | Open              |

### DRAM CONFIGURATION

| Size | Bank 0       | Bank 1       |
|------|--------------|--------------|
| 1MB  | (4) 256K x 9 | NONE         |
| 2MB  | (4) 256K x 9 | (4) 256K x 9 |
| 4MB  | (4) 1M x 9   | NONE         |
| 5MB  | (4) 256K x 9 | (4) 1M x 9   |
| 8MB  | (4) 1M x 9   | (4) 1M x 9   |
| 16MB | (4) 4M x 9   | NONE         |
| 20MB | (4) 1M x 9   | (4) 4M x 9   |
| 20MB | (4) 4M x 9   | (4) 1M x 9   |
| 32MB | (4) 4M x 9   | (4) 4M x 9   |

### CACHE CONFIGURATION

| Size  | Bank 0       | Bank 1      | TAG         |
|-------|--------------|-------------|-------------|
| 64KB  | (4) 8K x 8   | (4) 8K x 8  | (1) 8K x 8  |
| 128KB | (4) 32K x 8  | NONE        | (1) 8K x 8  |
| 256KB | (4) 32K x 8  | (4) 32K x 8 | (1) 32K x 8 |
| 512KB | (4) 128K x 8 | NONE        | (1) 32K x 8 |

### CACHE JUMPER CONFIGURATION

| Size  | JP4   | JP5    | JP6    | JP7    | JP13   | JP15  | JP16  | JP17  | JP18  |
|-------|-------|--------|--------|--------|--------|-------|-------|-------|-------|
| 64KB  | 2 & 3 | Open   | Open   | Open   | Open   | 1 & 2 | 1 & 2 | 2 & 3 | 2 & 3 |
| 128KB | 1 & 2 | Open   | Open   | Closed | Closed | 2 & 3 | 1 & 2 | 1 & 2 | 2 & 3 |
| 256KB | 2 & 3 | Closed | Open   | Closed | Closed | 1 & 2 | 2 & 3 | 1 & 2 | 2 & 3 |
| 512KB | 1 & 2 | Closed | Closed | Closed | Closed | 2 & 3 | 2 & 3 | 1 & 2 | 2 & 3 |

Note: Pins designated should be in the closed position.

### CPU TYPE CONFIGURATION

| Type     | JP1    | JP2               | JP3               |
|----------|--------|-------------------|-------------------|
| 80486SX  | Open   | pins 2 & 3 closed | Open              |
| ODP486SX | Closed | pins 1 & 2 closed | pins 1 & 2 closed |
| 80486DX  | Closed | pins 1 & 2 closed | pins 2 & 3 closed |