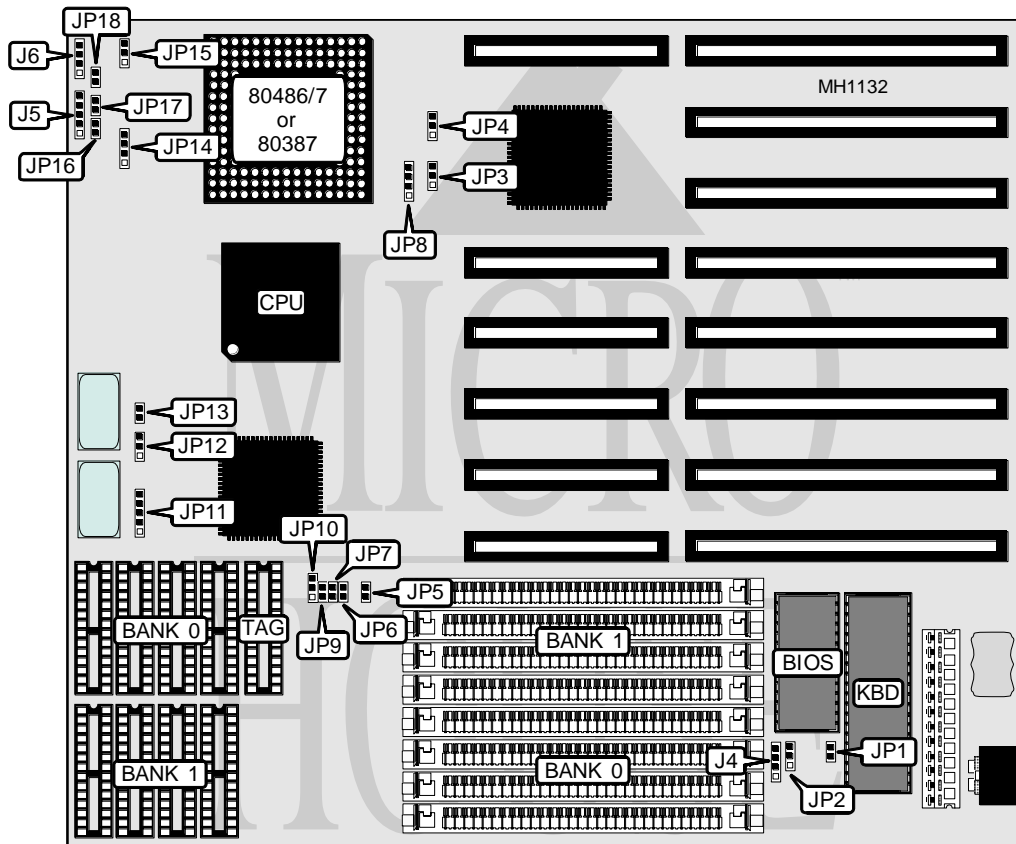


TARGET MICRO TYPHOON 486-386/ISA

Processor	80386DX/80486DLC/80486SX/80487SX/80486DX/80486DX2
Processor Speed	25/33/40/50(internal)/50/66(internal)66MHz
Chip Set	UNI
Max. Onboard DRAM	128MB
Cache	32/64/128/256KB
BIOS	AMI
Dimensions	254mm x 218mm
I/O Options	None
NPU Options	80387



CONNECTIONS			
Purpose	Location	Purpose	Location
External battery	J4	Turbo LED	JP16
Power LED & keylock	J5	Turbo switch	JP17
Speaker	J6	Reset switch	JP18

Continued on next page . . .

TARGET MICRO

TYPHOON 486-386/ISA

... continued from previous page

USER CONFIGURABLE SETTINGS		
Function	Jumper	Position
í Battery type select internal	J4	Open
Battery type select external	J4	Closed
í Keyboard controller select 386 KBGA20	JP14	pins 1 & 2 closed
í Keyboard controller select 386 emulate KBGA20	JP14	Open
Keyboard controller select emulate KBGA20	JP14	pins 2 & 3 closed
Keyboard controller select 486DX/DLC emulate KBGA20	JP14	pins 3 & 4 closed
í Monitor type select color	JP1	Closed
Monitor type select monochrome	JP1	Open
í CMOS memory normal operation	JP2	pins 1 & 2 closed
CMOS memory clear	JP2	pins 2 & 3 closed
Factory configured - do not alter	JP13	Open

DRAM CONFIGURATION		
Size	Bank 0	Bank 1
1MB	(4) 256K x 9	NONE
2MB	(4) 256K x 9	(4) 256K x 9
4MB	(4) 1M x 9	NONE
5MB	(4) 1M x 9	(4) 256K x 9
8MB	(4) 1M x 9	(4) 1M x 9
16MB	(4) 4M x 9	NONE
17MB	(4) 4M x 9	(4) 256K x 9
20MB	(4) 4M x 9	(4) 1M x 9
32MB	(4) 4M x 9	(4) 4M x 9
64MB	(4) 16M x 9	NONE
65MB	(4) 16M x 9	(4) 256K x 9
80MB	(4) 16M x 9	(4) 4M x 9
128MB	(4) 16M x 9	(4) 16M x 9

CACHE CONFIGURATION			
Size	Bank 0	Bank 1	TAG
32KB	(4) 8K x 8	NONE	(1) 8K x 8
64KB	(4) 8K x 8	(4) 8K x 8	(1) 8K x 8
128KB	(4) 32K x 8	NONE	(1) 8K x 8
256KB	(4) 32K x 8	(4) 32K x 8	(1) 16K x 4

CACHE JUMPER CONFIGURATION				
Size	JP6	JP7	JP9	JP11
32KB	Open	Open	Open	pins 2 & 3 closed
64KB	Open	Closed	Open	pins 1 & 2 closed
128KB	Open	Closed	Closed	pins 1 & 2, 3 & 4 closed
256KB	Open	Closed	Closed	pins 1 & 2, 4 & 5 closed

Continued on next page...

TARGET MICRO

TYPHOON 486-386/ISA

... continued from previous page

CPU TYPE CONFIGURATION							
Type	JP3	JP4	JP5	JP8	JP10	JP12	JP15
80386DX	See note	See note	Open	See note	2 & 3	2 & 3	2 & 3
CX486DLC	1 & 2	See note	Open	See note	2 & 3	2 & 3	2 & 3
80486SX	See note	Open	Closed	1 & 2, 3 & 4	1 & 2	1 & 2	1 & 2
80487SX	See note	2 & 3	Closed	1 & 2, 3 & 4	1 & 2	1 & 2	1 & 2
80486DX	See note	1 & 2	Closed	2 & 3	1 & 2	1 & 2	1 & 2
80486DX2	See note	1 & 2	Closed	2 & 3	1 & 2	1 & 2	1 & 2

Note: Speed select for 386DX is JP3 pins 1 & 2 closed = 33/40MHz, pins 2 & 3 closed = 25MHz.
Pins designated should be in the closed position.

CPU OSCILLATOR CONFIGURATION	
Type	OSC
80386DX-25	50MHz
80386DX-33	66MHz
80386DX-40	80MHz
CX486DLC-33	66MHz
CX486DLC-40	80MHz
80486SX-20	20MHz
80486SX-25	25MHz
80487SX-20	20MHz
80487SX-25	25MHz
80486DX-25	25MHz
80486DX-33	33MHz
80486DX-50	50MHz
80486DX2-50	25MHz
80486DX2-66	33MHz